

NOTE: DEEDS MARKED * ARE DEEDS TO THE TRUSTEES OF SPRING CREEK TWP. FOR 20' MEASURED FROM THE E. GEISERMAN ROAD. ALTHOUGH THEY ARE QUIT CLAIM & TRUSTEES DEEDS, WE ARE GOING TO TREAT THEM AS EASEMENTS AS NOT TO NEGATE THE SURVEYS DONE IN THE AREA. ALSO, AUDITOR "OK'ED" - NOT TRANSFERRED DEEDS, ALSO INDICATING EASEMENTS. NO TRANSFERS WERE MADE IN THE AUDITOR'S TRANSFER BOOK.

D. VENTURA
 DEP. ENG.
 9-10-2009

Washington Township
 Sec. 33

Kelly A.
 Earhart, Trustee
 DB 735-481

Robert
 Covault
 DB 701-416

Robert
 Smith
 TR.A
 5005 AC.
 LND. 51-5
 44-156
 24-121

Karl-Henrik +
 Sandra L.
 Funks
 DB 700-724

K.A. EARHART, TRUSTEE
 DB. 747-131
 DB 735-481

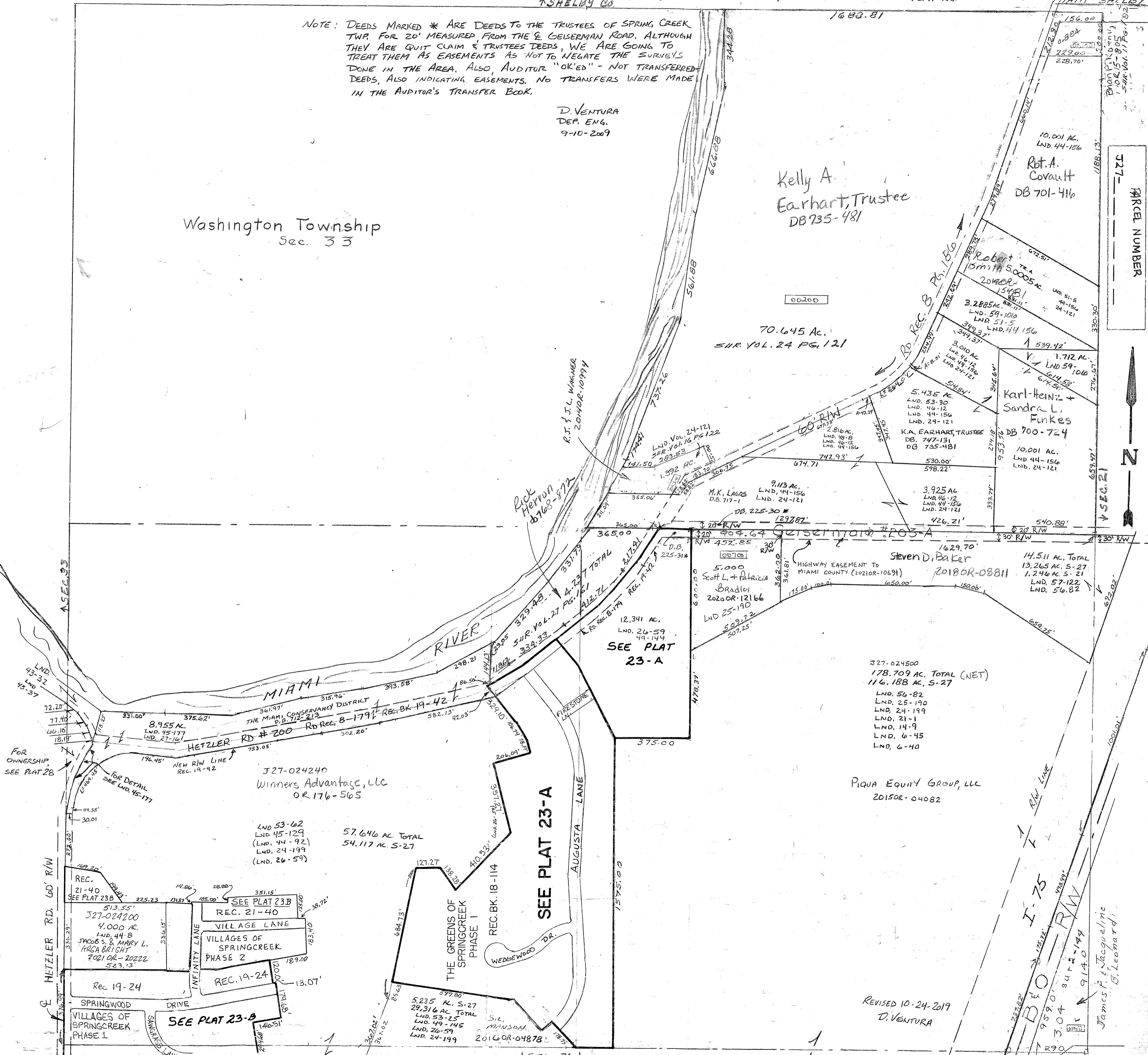
Steven D. Baker
 2018OR-08811
 14.511 AC. TOTAL
 13.265 AC. S-27
 1.246 AC. S-21
 LND. 57-122
 LND. 56-82

J27-024500
 178.709 AC. TOTAL (NET)
 116.188 AC. S-27

PIQUA EQUITY GROUP, LLC
 2015OR-04082

REVISED 10-24-2019
 D. VENTURA

- Surveys 7-14 - SE P T SE
- Vol. 11 Pg. 182 - NE CORNE
- Vol. 14 Pg. 9 - Cen P T SE
- Vol. 16 Pg. 122 - S.W. P T N.E.
- Vol. 2 Pg. 144 - SE P T SE
- Vol. 6 Pg. 40 - S Cen P T SE
- Vol. 6 Pg. 45 - S Cen P T SE
- Vol. 9 Pg. 68 - W Cen P T SW



PARCEL NUMBER
 527-1

James F. & Jacqueline
 B. Leonard