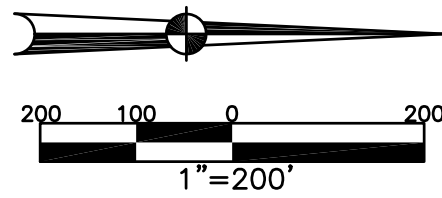


SPRINGCREEK TOWNSHIP
MIAMI COUNTY, OHIO

PART S.E., PART N.E. QUARTERS
SECTION 25 TOWN 1 RANGE 12

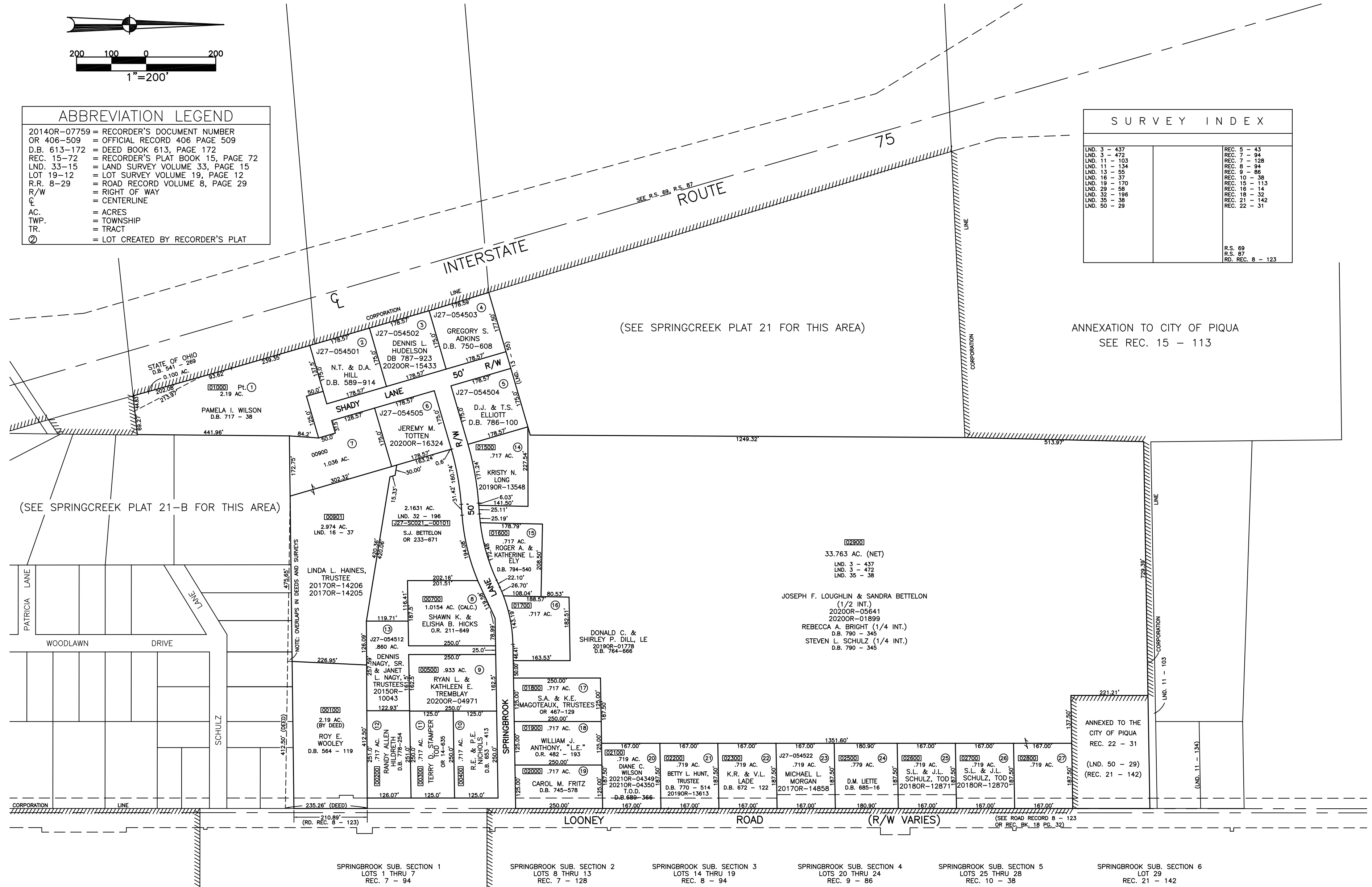
SMDA NUMBER
J27-SC021C-

PLAT 21-C



ABBREVIATION LEGEND	
20140R-07759	= RECORDER'S DOCUMENT NUMBER
OR 406-509	= OFFICIAL RECORD 406 PAGE 509
D.B. 613-172	= DEED BOOK 613, PAGE 172
REC. 15-72	= RECORDER'S PLAT BOOK 15, PAGE 72
LND. 33-15	= LAND SURVEY VOLUME 33, PAGE 15
LOT 19-12	= LOT SURVEY VOLUME 19, PAGE 12
R.R. 8-29	= ROAD RECORD VOLUME 8, PAGE 29
R/W	= RIGHT OF WAY
⊕	= CENTERLINE
AC.	= ACRES
TWP.	= TOWNSHIP
TR.	= TRACT
Ⓢ	= LOT CREATED BY RECORDER'S PLAT

SURVEY INDEX	
LND. 3 - 437	REC. 5 - 43
LND. 3 - 472	REC. 7 - 94
LND. 11 - 103	REC. 7 - 128
LND. 11 - 134	REC. 8 - 94
LND. 13 - 55	REC. 9 - 86
LND. 16 - 57	REC. 10 - 36
LND. 19 - 170	REC. 15 - 113
LND. 29 - 68	REC. 16 - 14
LND. 32 - 196	REC. 18 - 32
LND. 35 - 38	REC. 21 - 142
LND. 50 - 29	REC. 22 - 31
	R.S. 69
	R.S. 87
	RD. REC. 8 - 123



PREPARED BY: MIAMI COUNTY ENGINEER'S MAP DEPARTMENT
PAUL P. HUELSKAMP, P.E., P.S., COUNTY ENGINEER
DATE: NOVEMBER 1, 1996
REVISED: March 16, 2021 CSHOUP