

- Surveys -
- Vol. 1 Page 138 con. Pt. N.E. Sec.
 - " 14 " 144 N.W. cor. N.W.
 - " 15 " 111 W. cen. Pt. N.W.
 - " 15 " 171 W. cen. Pt. N.W.
 - " 16 " 113 W. Pt. N.W.
 - " 18 " 133 N. Pt. N.E.
 - Lnd. 42-158 N. Cen. Pt. NE. Qtr.
 - Lnd. 42-175 Cen. Pt. NW. Qtr.
 - Lnd. 43-118 N.E. Pt. N.E. Qtr.
 - Lnd. 48-49 N. Pt. N.E. Qtr.
 - REC. 24-17 CL FLAT
 - LND. 55-21 NE. QTR.
 - Vol. 2 Page 103 N.W. Pt. N.E.
 - " 105 N.W. Pt. N.E.
 - " 156 Whole
 - " 157 5/8 of Sec.
 - " 202 E 1/2 NE. 1/4 Sec. S.E.
 - " 368 N.W. cor. S.W.
 - " 171 N. Cen. Pt. N.E.
 - " 150 N.W. cor. N.W.
 - " 112 N.W. cor. N.W.
 - " 91 - N.W. Pt. N.E.
 - " 138 S.W. cor. S.W.
 - Sub. 1

1-75

PLAT. REC. 24-17
RSMD-150 - MIA-75-15-69

CORP. LINE

176.00

1299

1309.5'

1308.20

112.387

1326.00'

919.37' 1715.53'

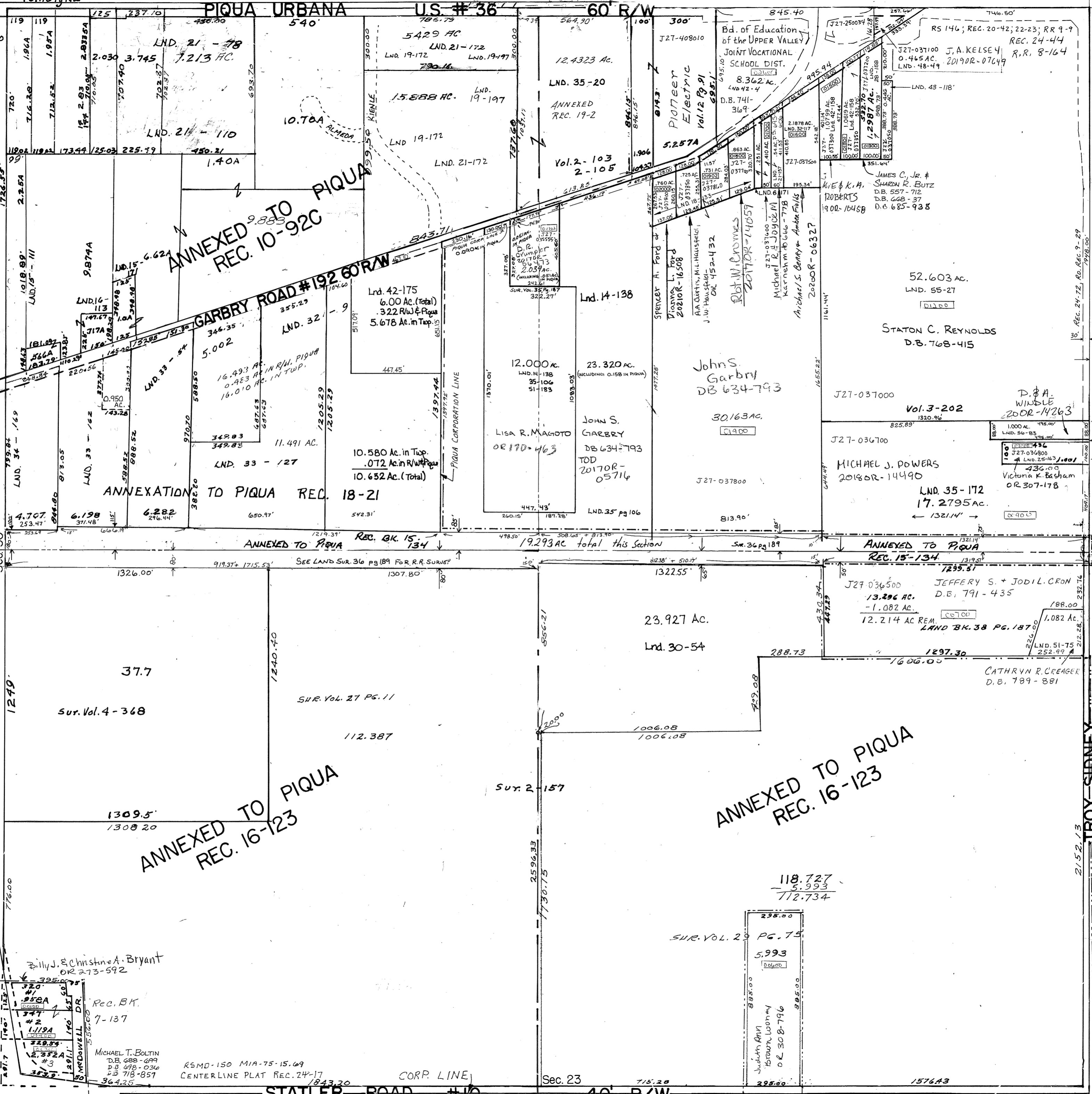
1240.70

118.727

5.993

712.734

1576.43



330 scale

521

PARCEL NUMBER