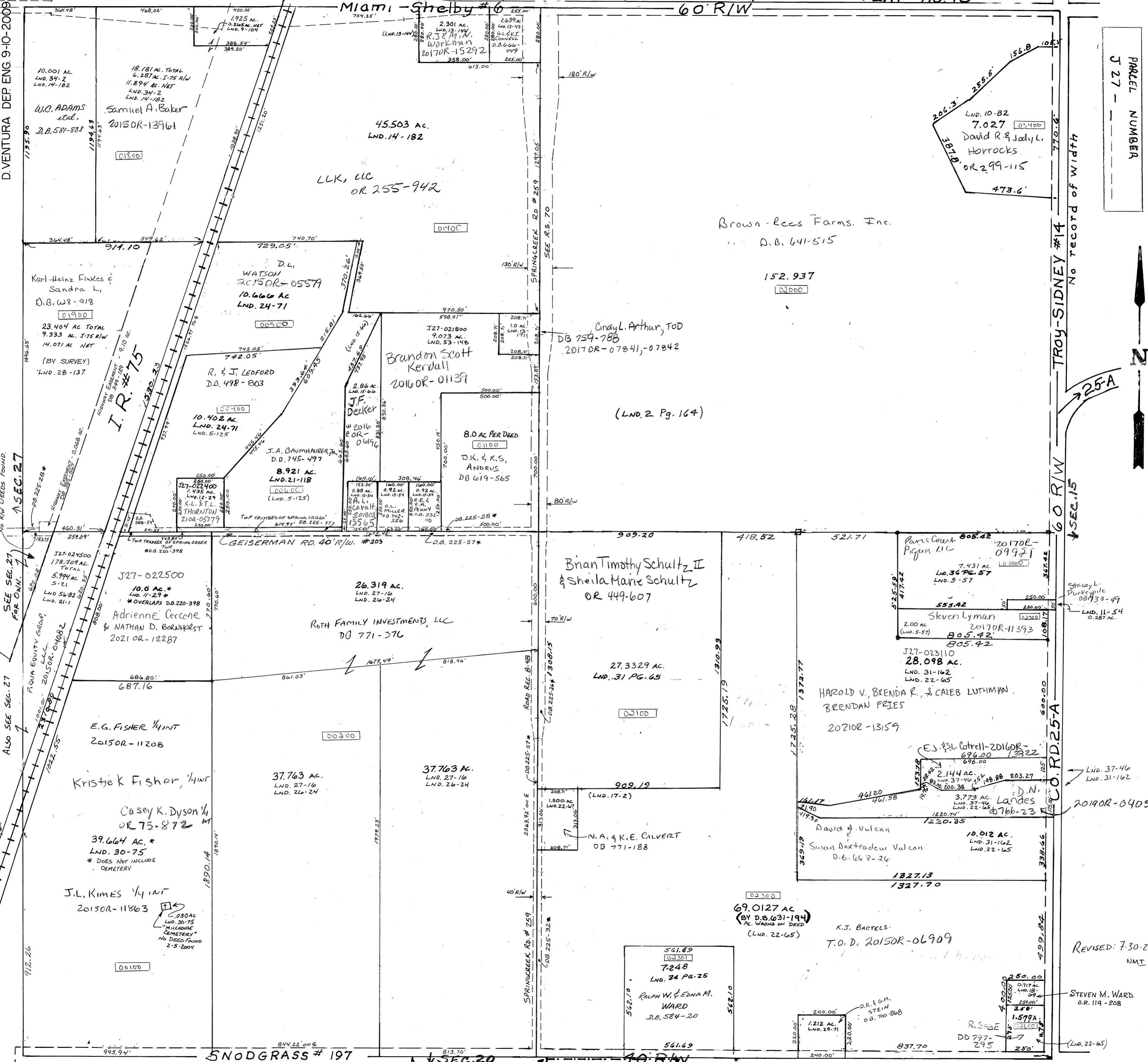


NOTE: DEED REFERENCES MARKED \* ARE DEEDS TO THE TRUSTEES OF SPRING CREEK TWP FOR 20 MEASURED FROM THE E. OF GEISERMAN ROAD. ALTHOUGH THEY ARE QUIT CLAIM & TRUSTEES DEEDS, WE ARE GOING TO TREAT THEM AS EASEMENTS AS NOT TO NEGATE THE SURVEYS DONE IN THE AREA. ALSO, AUDITOR OKED - NOT "TRANSFERRED" DEEDS, ALSO INDICATING EASEMENTS. NO TRANSFERS WERE MADE IN THE AUDITOR'S TRANSFER BOOK. D. VENTURA DEP. ENG. 9-10-2009

- Vol. 1 Pg. 1 - N.E. Cor. S.E.
- Vol. 1 Pg. 2 - S. Cor. Pt. N.W.
- Vol. 1 Pg. 3 - N.E. Cor. N.W.
- Vol. 1 Pg. 4 - N.E. Pt. N.W.
- Vol. 1 Pg. 5 - E. Cor. Pt. N.W.
- Vol. 1 Pg. 6 - N. 1/2 N.W.
- Vol. 1 Pg. 7 - S.E. Pt. N.W.
- Vol. 1 Pg. 8 - S. Cor. Pt. N.W.
- Vol. 1 Pg. 9 - S. Pt. S.E.
- Vol. 1 Pg. 10 - S.E. Cor. S.E.
- Vol. 11 Pg. 1 - S.W. Cor. N.E.
- Vol. 1 Pg. 2 - N.E. Cor. S.E.
- Vol. 1 Pg. 3 - S. Cor. Pt. N.W.
- Vol. 1 Pg. 4 - S. Pt. S.E.
- Vol. 1 Pg. 5 - Section between H.W. & S.W. Pt. N.W.
- Vol. 1 Pg. 6 - N. Cor. Pt. N.W.



PARCEL NUMBER  
J 27 -



No record of width

SEC. 15

RD. 25-A

REVISED: 7.30.21  
NMT

STEVEN M. WARD  
OR. 119-208