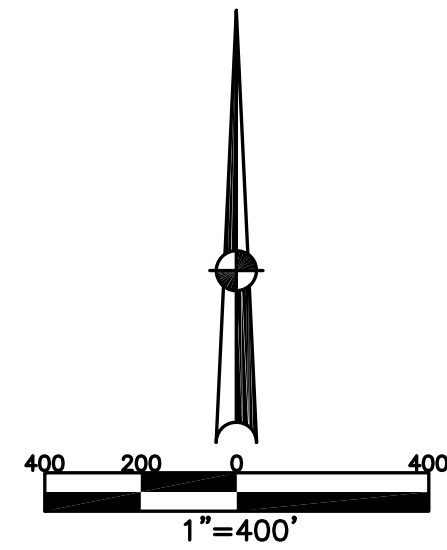


SPRING CREEK TWP.  
MIAMI COUNTY, OHIO

SECTION 17 TOWN 1 RANGE 11

PARCEL NUMBER  
J27-  
J28-

PLAT 14

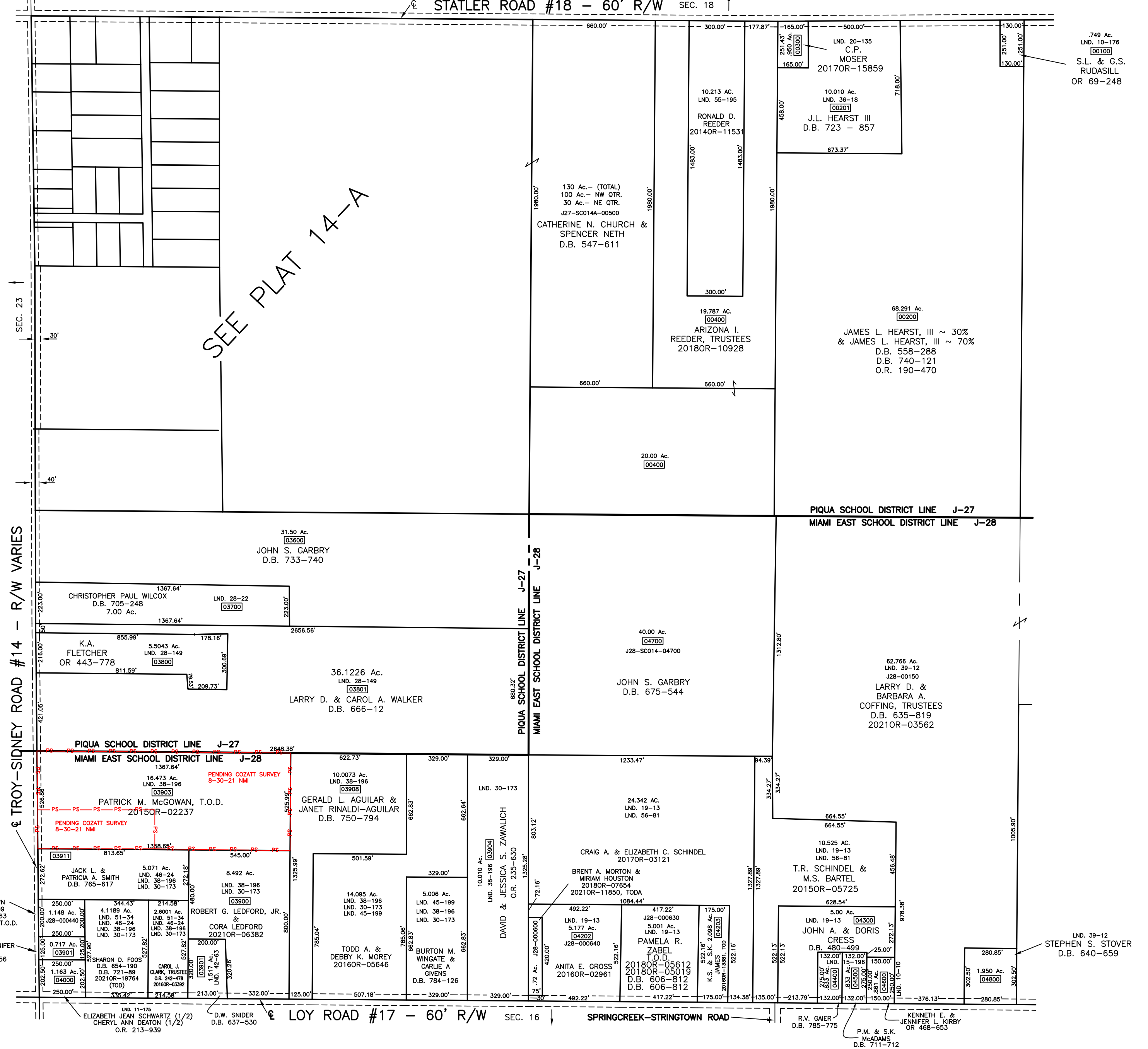


**ABBREVIATION LEGEND**

2014OR-07759 = RECORDER'S DOCUMENT NUMBER  
OR 406-509 = OFFICAL RECORD 406, PAGE 509  
D.B. 613-172 = DEED BOOK 613, PAGE 172  
REC. 15-72 = RECORDER'S PLAT BOOK 15, PAGE 72  
LND. 33-15 = LAND SURVEY VOLUME 33, PAGE 15  
LOT 19-12 = LOT SURVEY VOLUME 19, PAGE 12  
R.R. 8-29 = ROAD RECORD VOLUME 8, PAGE 29  
R/W = RIGHT OF WAY  
C = CENTERLINE  
AC. = ACRES  
TWP. = TOWNSHIP  
TR. = TRACT  
② = LOT CREATED BY RECORDER'S PLAT

**SURVEY INDEX**

NORTHWEST QUARTER		
LND. 3-101	REC. 21-32	RD. REC. 9-5
LND. 10-146		
LND. 11-43		
LND. 19-70		
LND. 35-161		
REC. 7-30		
REC. 7-62		
REC. 7-104		
SEE PLAT 14-A		
NORTHEAST QUARTER		
LND. 10-176		
LND. 20-135		
LND. 36-18		
LND. 55-195		
SOUTHWEST QUARTER		
LND. 11-175		
LND. 28-22		
LND. 28-149		
LND. 38-196		
LND. 30-173		
LND. 38-175		
LND. 42-63		
LND. 45-199		
LND. 46-24		
LND. 51-34		
SOUTHEAST QUARTER		
LND. 10-10		
LND. 15-196		
LND. 19-13		
LND. 39-12		
LND. 56-81		



PREPARED BY: MIAMI COUNTY ENGINEER'S MAP DEPARTMENT  
PAUL P. HUELSKAMP, COUNTY ENGINEER  
DATE: AUGUST 1993  
REVISED: November 15, 2021 PALMER