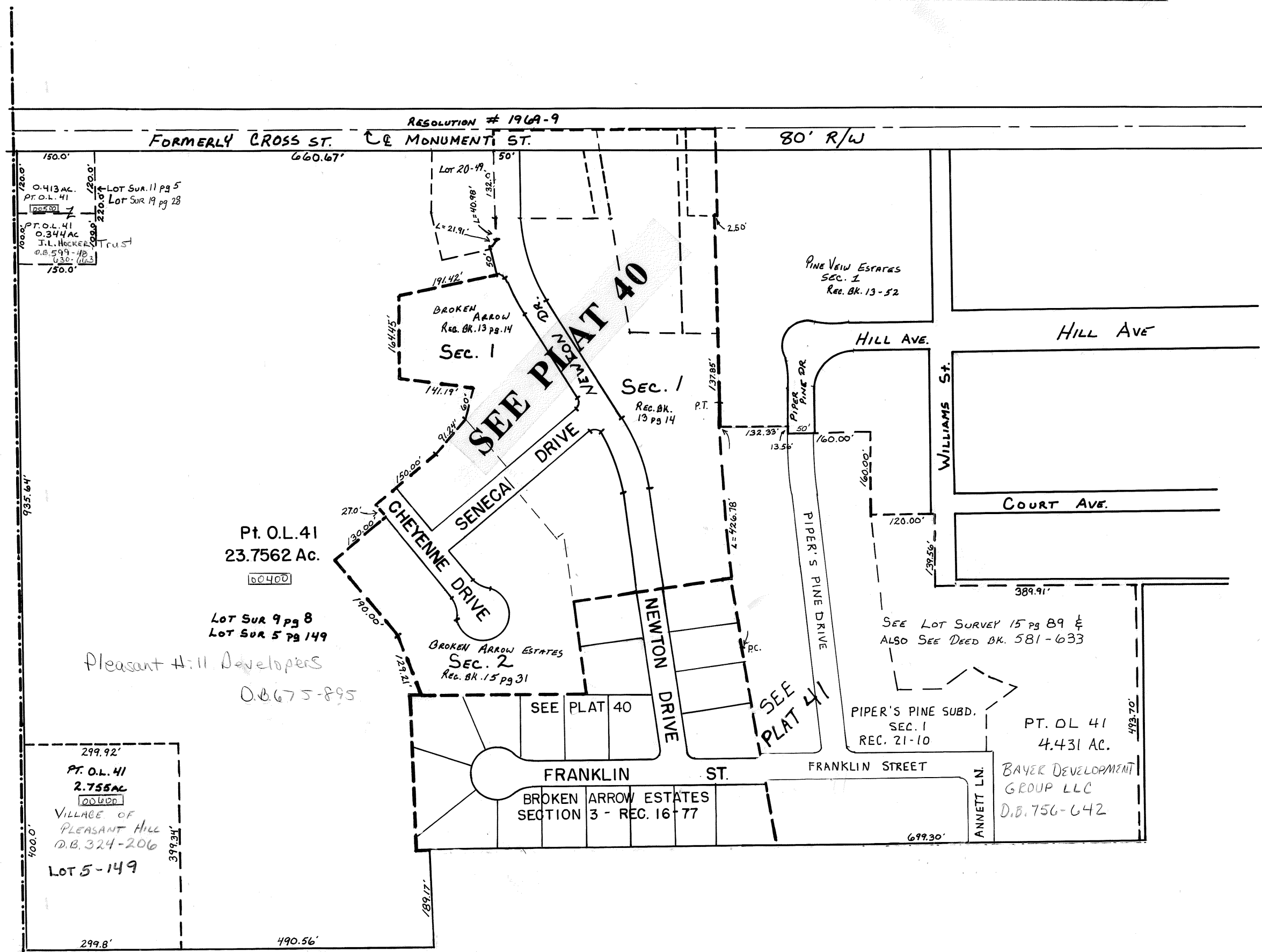


MIAMI COUNTY, OHIO  
 VILLAGE OF PLEASANT HILL

PLAT 25

SCALE: 1"=200'

SMDA NUMBER  
 126-P4025



FOR ORIGINAL BOUNDARY OF O.L. 41  
 SEE REC. BK. 1 PG 428

REVISED 5-14-2009  
 D. VENTURA