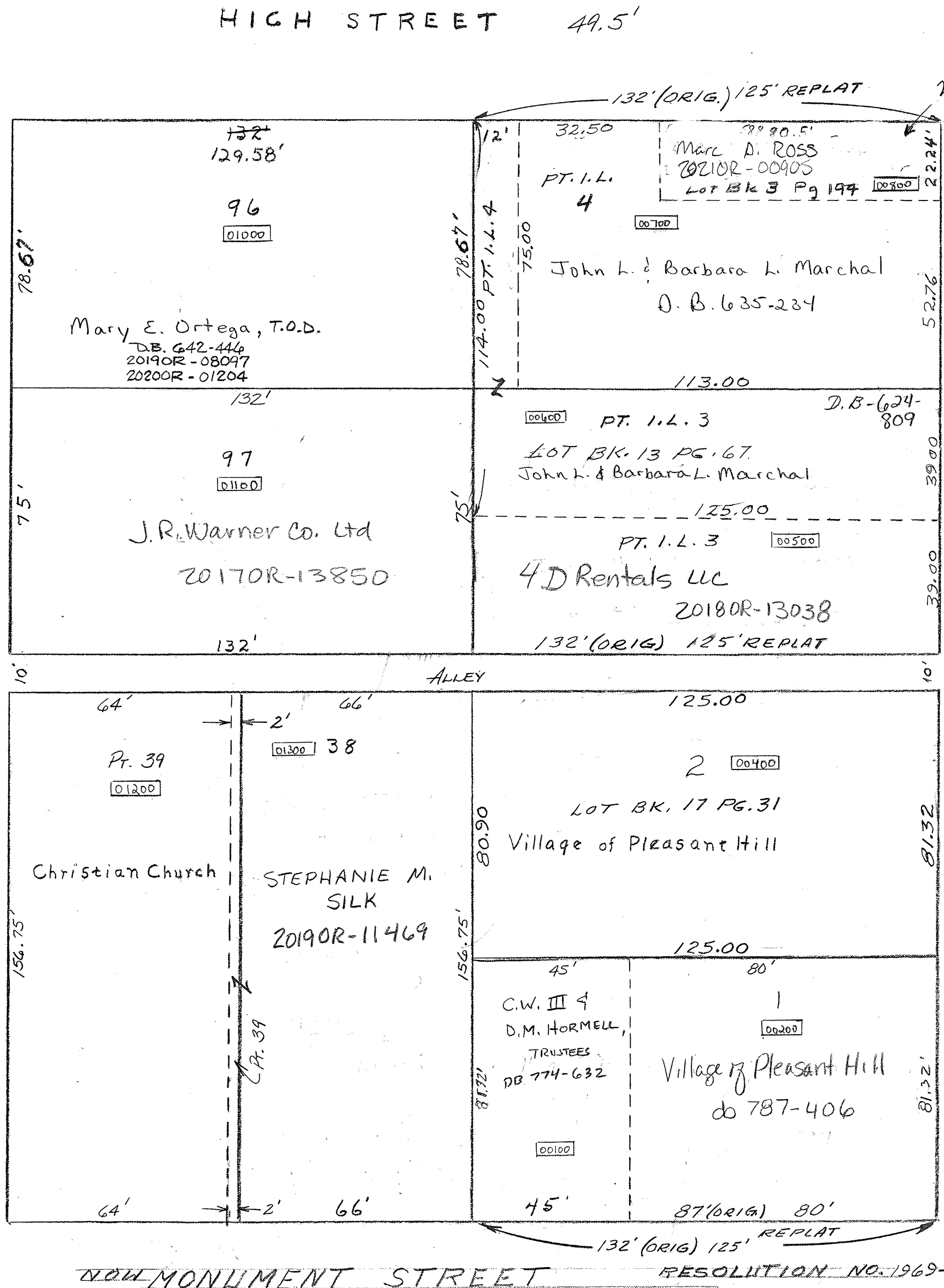


Eng. Sur. Book 3 Page 194

CHURCH STREET 66'



ORIGINAL PLAT SHOWS MAIN ST. 66' WIDE - LOTS FACING MAIN ST. ARE 7' SHORTER, BY ORDER OF COUNCIL, 1980, FROM MONUMENT ST. NORTH. PLAT BK. 1 PG. 456

MAIN STREET 80'

LOTS 1 THRU 4 - DEED BK. 20, Pg. 551
LOTS 38, 39 - DEED BK. 24, Pg. 489
LOTS 96, 97 - REC. PLAT BK. 1, Pg. 392

CROSS STREET 80'