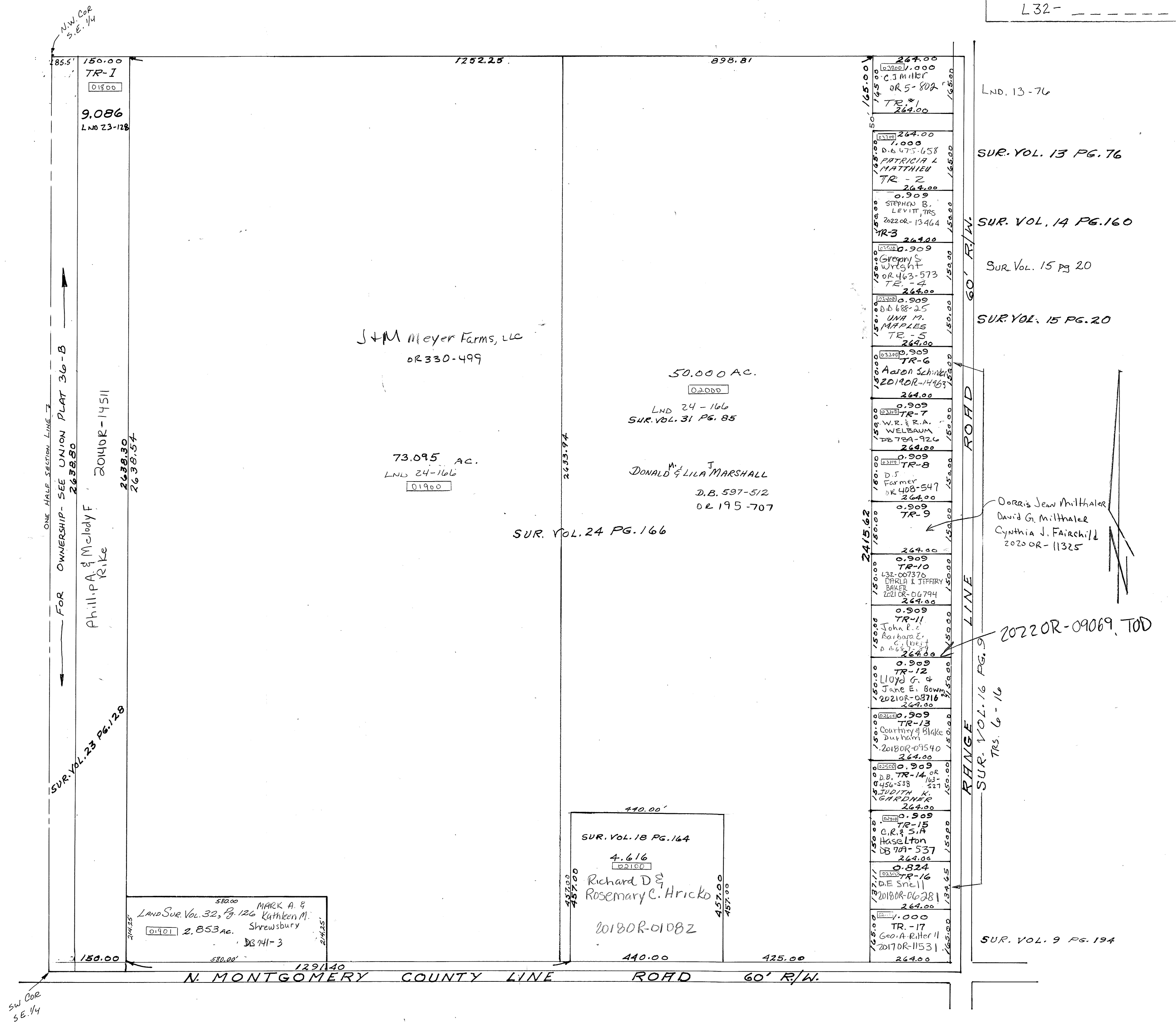


PARCEL NUMBER
L32- - - - -



TR-1
01800
9,086
LND 23-128

J+M Meyer Farms, LLC
OR 330-499

73.095 AC.
LND 24-166
01900

50.000 AC.
02000
LND 24-166
SUR. VOL. 31 PG. 85

Donald & Lila Marshall
D.B. 597-512
OR 195-707

SUR. VOL. 24 PG. 166

Phillip A. & Melody F. Rike
20140R-14511
2638.30
2638.54

ONE HALF SECTION LINE 7
FOR OWNERSHIP - SEE UNION PLAT 36-B
SUR. VOL. 23 PG. 128

MARK A. & Kathleen M. Shrewsbury
2.853 ac.
DB 741-3

Richard D. & Rosemary C. Hricko
20180R-01082

- 264.00
0.909
C.J. Miller
OR 5-802
TR-1
264.00
- 264.00
1.000
D.B. 475-658
PATRICIA L. MATTHIEU
TR-2
264.00
- 0.909
STEPHEN B. LEVITT TRS
2022OR-13464
TR-3
264.00
- 0.909
Green S. Wright
OR 463-573
TR-4
264.00
- 0.909
D.B. 688-25
UNA M. MAPLES
TR-5
264.00
- 0.909
Aadon Schink
2019OR-14463
TR-6
264.00
- 0.909
W.R. & R.A. WELBAUM
DB 72A-926
TR-7
264.00
- 0.909
D.J. Farmer
OR 408-547
TR-8
264.00
- 0.909
TR-9
264.00
- 0.909
TR-10
264.00
- 0.909
TR-11
264.00
- 0.909
TR-12
264.00
- 0.909
TR-13
264.00
- 0.909
TR-14
264.00
- 0.909
TR-15
264.00
- 0.824
TR-16
264.00
- 1.000
TR-17
264.00

- LND. 13-76
- SUR. VOL. 13 PG. 76
- SUR. VOL. 14 PG. 160
- SUR. VOL. 15 PG. 20
- SUR. VOL. 15 PG. 20

Doris Jean Milthaler
David G. Milthaler
Cynthia J. Fairchild
2020OR-11325

2022OR-09069, TOD

SUR. VOL. 16 PG. 9
TR. 6-16

SUR. VOL. 9 PG. 194

REVISED 9/13/22

SW COR
S.E. 1/4