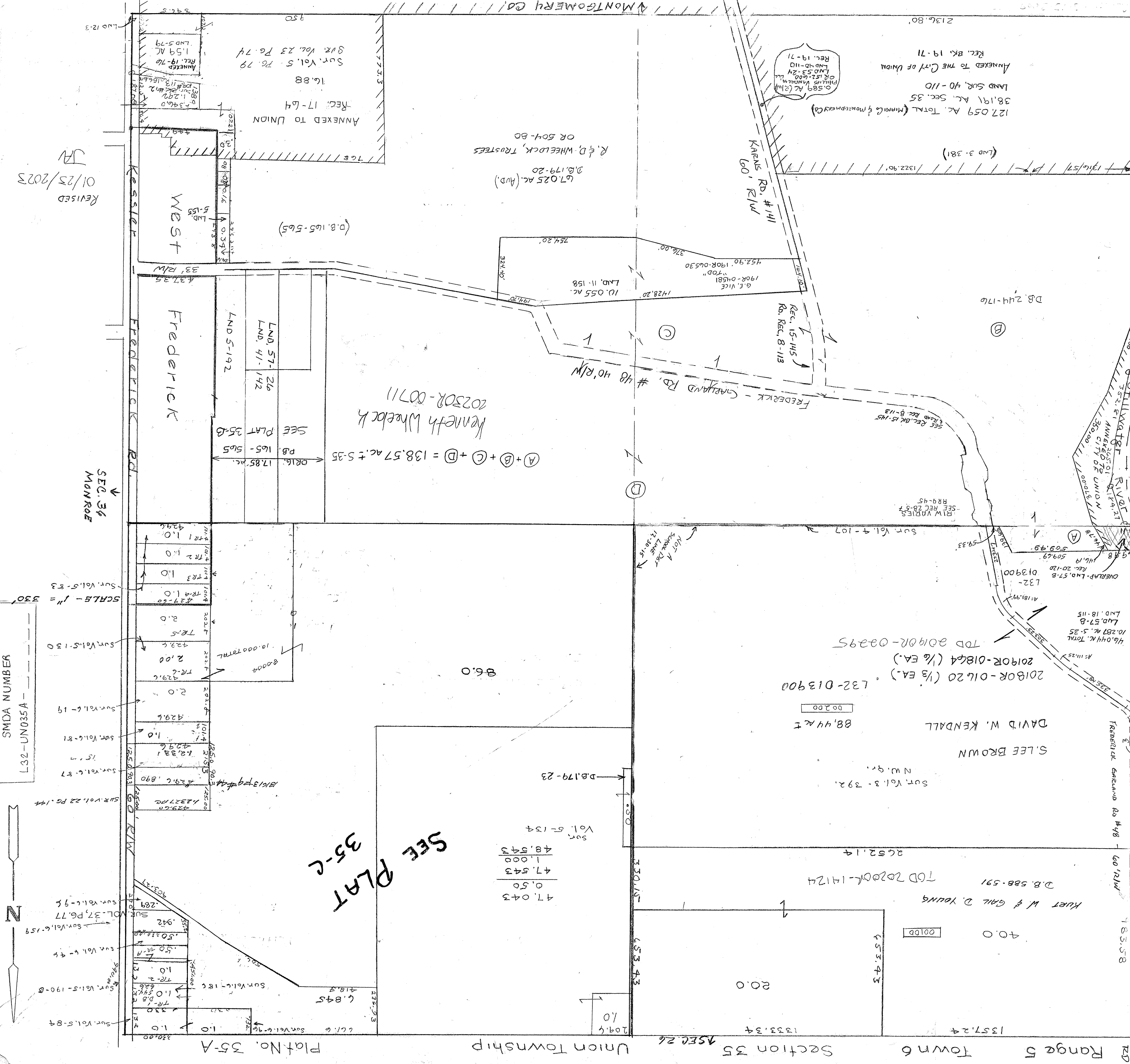


- SURVEYS - 1/2 Sec
 Vol. 3 Pg. 381 - NW 1/2
 Vol. 3 Pg. 392 - NW 1/4
 Vol. 3 Pg. 453 - NW 1/2
 Vol. 4 Pg. 107 - 1/2 Sec Line
 Vol. 5 Pg. 19 - SE 1/4
 Vol. 5 Pg. 83 - SE 1/4
 Vol. 5 Pg. 84 - NE CORNER

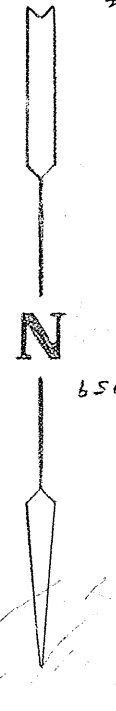
Vol. 5 - Pg 130 - NW 1/4
 Vol. 5 - Pg 134 - NW 1/4
 Vol. 5 - Pg 155 - E P 1/2 SE
 Vol. 5 - Pg 190 - NE P 1/2 SE
 Vol. 5 - Pg 192 - NE P 1/2 SE
 Vol. 6 - Pg 46 - NE P 1/2 SE
 Vol. 6 - Pg 47 - NE P 1/2 SE

- SURVEYS -
 E P 1/2 NE Vol. 6 - Pg 81
 E P 1/2 NE Vol. 6 - Pg 87
 S NE P 1/2 NE Vol. 6 - Pg 96
 S NE P 1/2 NE Vol. 6 - Pg 159
 S NE P 1/2 NE Vol. 6 - Pg 186
 S NE P 1/2 NE Vol. 6 - Pg 287



REVISED
 01/25/2023
 JA

SMDA NUMBER
 32-UN035A-330



47.043	0.50	47.543	1.000	48.043
Sur				
Vol. 5-134				

SEE PLAT
 35-C

Plat No. 35-A

Union Township

Section 26

Section 35

Town 6

Range 5

Range 6

Range 7

2019OR-01620 (1/3 EA.)
 2019OR-01864 (1/3 EA.)
 2019OR-02295

DAVID W. KENDALL
 88,444 ±

S. LEE BROWN

SUR Vol. 3 - 392.

DB.179-23

D.B. 588-591

KURT W & GAIL D. YOUNG

40.0

20.0

209.4

1353.34

1357.24

183.58

60.121W

64.944E

18.3.58

78.3.58

FREDERICK

GARLAND

Rd # 48

60.121W

REC. 20-120

REC. 20-120

REC. 20-120

REC. 20-120

REC. 20-120

REC. 20-120

REC. 20-120

REC. 20-120