

Frederick-Garman # 48

1/2 W 60'

2661.08'

PARCEL NUMBER
L34-1111

Pending split
(Lnd 61-168)

00900
L32-006600
150.559 Ac.
Lnd. 46-39

J & M Meyer Farms, LLC
OR 330-499

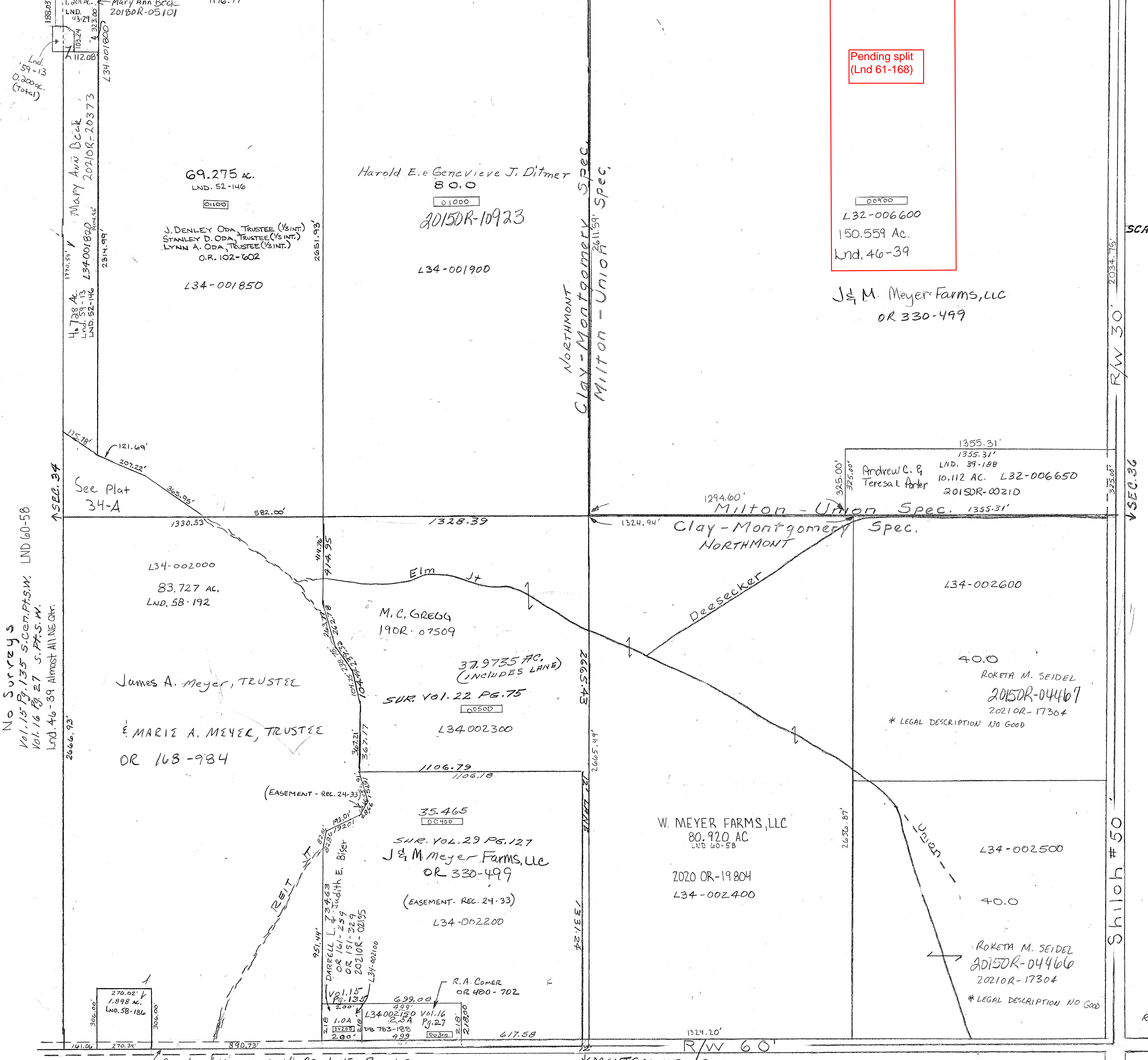
SCALE - 1" = 330'

R/W 30'

SEC. 36

Shiloh # 50

REVISED 12-11-2012



No Surveys
Vol. 15 Pg. 135 S. Cent. Pt. S.W. LND 60-58
Vol. 16 Pg. 27 S. Pt. S.W.
Lnd. 46-39 Almost All NE Qtr.

See Plat
34-A

L34-002000
83.727 AC.
LND. 58-192

James A. Meyer, TRUSTEE
MARIE A. MEYER, TRUSTEE
OR 168-984

M.C. GREGG
190R-07509
37.9735 AC.
(INCLUDES LANE)
SUR. VOL. 22 PG. 75
L34-002300

35.465
SUR. VOL. 29 PG. 127
J & M Meyer Farms, LLC
OR 330-499
(EASEMENT. REC. 24-33)
L34-002200

W. MEYER FARMS, LLC
80.920 AC
LND 60-58
2020 OR-19804
L34-002400

Andrew C. & Teresa L Porter
10.112 AC. L32-006650
2015DR-00210

L34-002600

40.0
ROKETA M. SEIDEL
2015DR-04467
2021OR-17304
* LEGAL DESCRIPTION NO GOOD

L34-002500

40.0

ROKETA M. SEIDEL
2015DR-04466
2021OR-17304
* LEGAL DESCRIPTION NO GOOD

270.02'
1.898 AC.
LND. 58-186

699.00
499'
200'
1.0A
1.0B
200'
L34-002150 Vol. 16
Pg. 27
OR 783-128
499
R.A. Comer
OR 480-702

Q N. MONTGOMERY CO. LINE RD. # 2

MONTGOMERY CO.