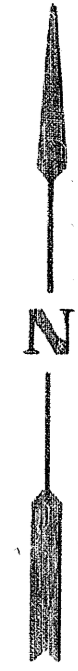


Frederick Garland

1 SEC. 33

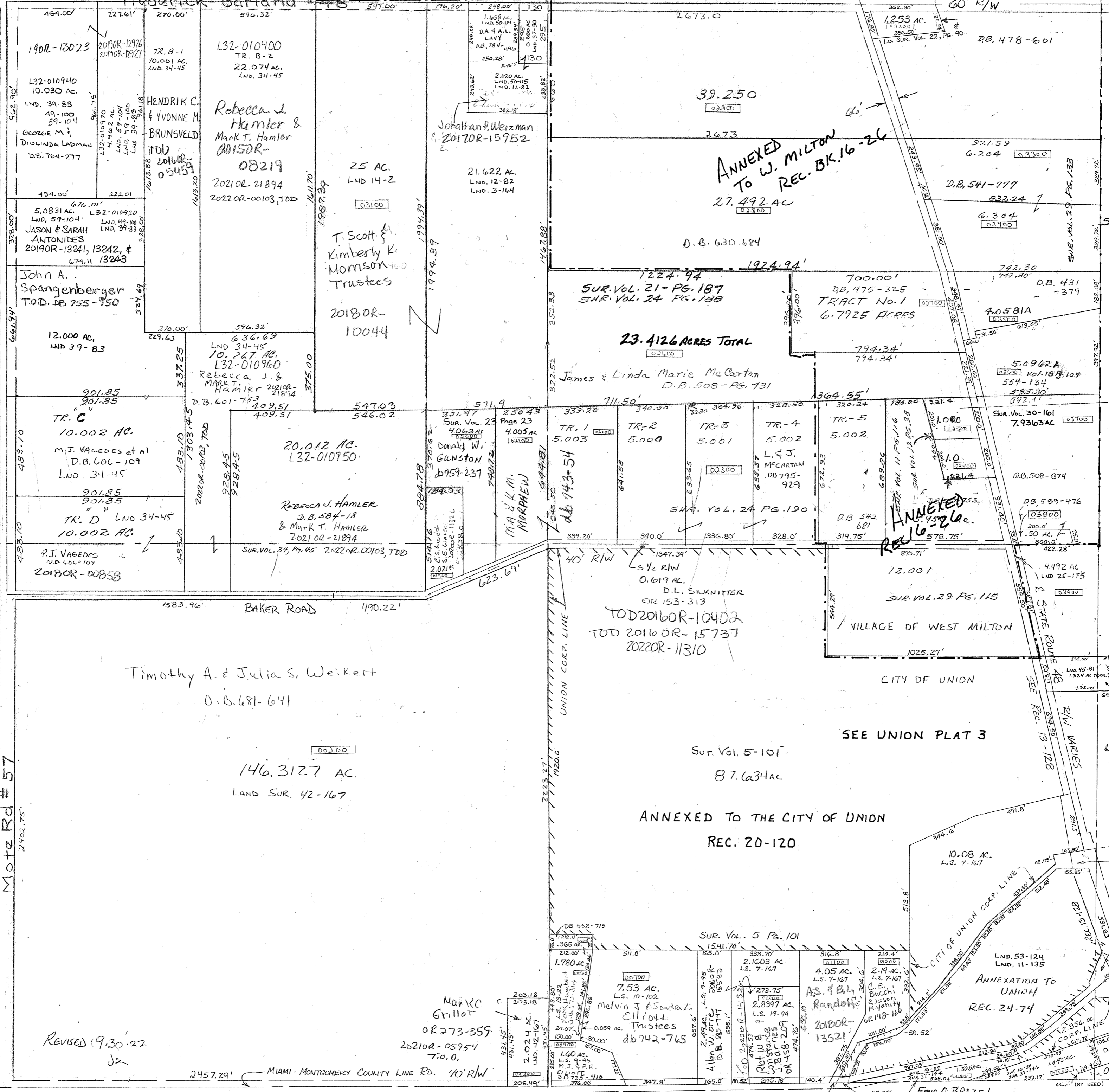
PARCEL NUMBER
L32 -

SCALE - 1" = 330'



Surveys
Vol. 3 Pg. 164 - E. P. NW 1/4
Vol. 4 Pg. 194 - SE P. 1/4 S.E.
Vol. 5 Pg. 101 - SE P. 1/4 S.E.
Vol. 7 Pg. 167 - S. C. N. P. 1/4 S.E.
Vol. 9 Pg. 95 - SW P. 1/4 S.E.
Vol. 11 Pg. 116 - S. P. 1/4 S.E.
Vol. 37 Pg. 30 - NW 1/4 S.E.
Vol. 12 - Pg. 38 - Cont. N.E.
Vol. 12 - Pg. 38 - E. P. N.W.
Vol. 13 - Pg. 22 - SW P. 1/4 S.E.
Vol. 14 - Pg. 2 - W. 1/2 E. P. N.W.
Vol. 16 - Pg. 39 - S. E. Cont. S.E.
Vol. 18 - Pg. 109 - E. P. N.E.
Lnd. 45-81 NE Cor. SE Q. 1/4
Lnd. 49-100 NW Cor. NW Q. 1/4
Lnd. 42-167 SE Cor. SW Q. 1/4

No Record of width
1 SEC. 32



REVISED 9.30.22
J2

2457.29' MIAMI-MONTGOMERY COUNTY LINE RD. 40' R/W

ROAD REC. 6-214 MONTGOMERY CO.

ERIC C. BRAZEL
2014OR-06656

SEE PLAT 34 FOR OWNERSHIP