

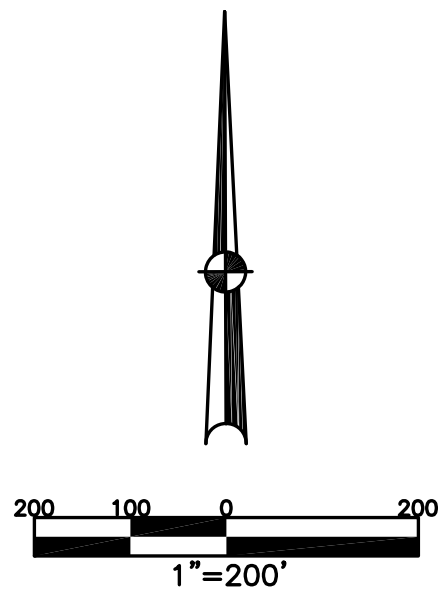
UNION TWP.  
MIAMI COUNTY, OHIO

SECTION 32 TOWN 6 RANGE 5  
NE 1/4

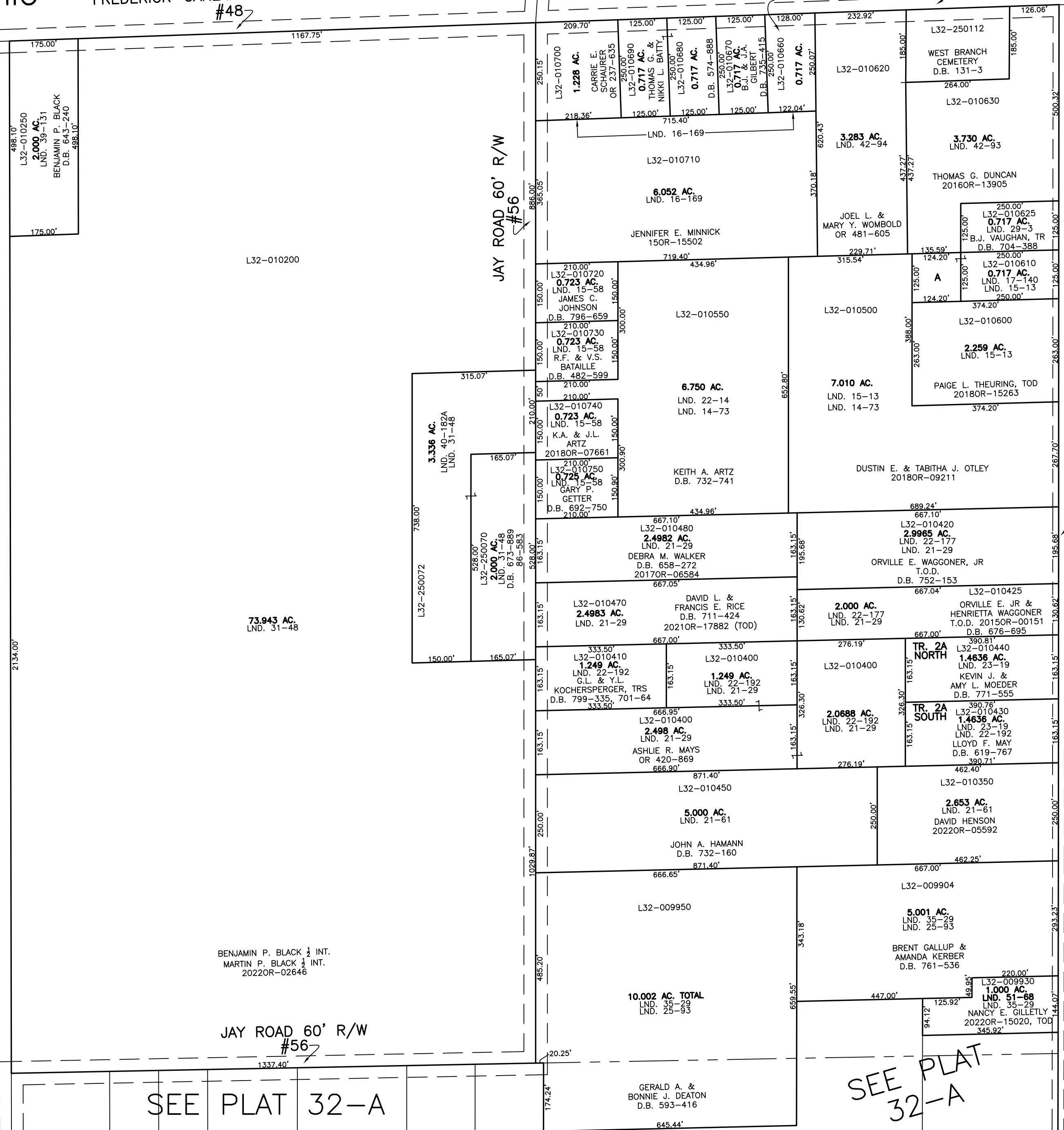
PLAT 32-B

FREDERICK-GARLAND ROAD 60' R/W #48

PARCEL NUMBER  
L32-\_\_\_\_\_  
FREDERICK-GARLAND ROAD 60' R/W T-48



ABBREVIATION LEGEND	
2014OR-07759	= RECORDER'S DOCUMENT NUMBER
OR 257-619	= OFFICIAL RECORD 257 PAGE 619
D.B. 613-172	= DEED BOOK 613, PAGE 172
REC. 15-72	= RECORDER'S PLAT BOOK 15, PAGE 72
LND. 33-15	= LAND SURVEY VOLUME 33, PAGE 15
LOT 19-12	= LOT SURVEY VOLUME 19, PAGE 12
R.R. 8-29	= ROAD RECORD VOLUME 8, PAGE 29
R/W	= RIGHT OF WAY
C	= CENTERLINE
AC.	= ACRES
TWP.	= TOWNSHIP
TR.	= TRACT
Ⓢ	= LOT CREATED BY RECORDER'S PLAT
LINE LEGEND	
	Blow-up Boundary
	Property Line
	Lot Split Line
	Section Line
	Centerline
	Right-of-Way Line
	Corporation Line
SURVEY INDEX	
LND. 14-73	LND. 35-29
LND. 15-13	LND. 39-131
LND. 16-169	LND. 40-182A
LND. 17-140	LND. 42-93
LND. 21-29	LND. 42-94
LND. 21-61	LND. 44-148
LND. 22-14	LND. 49-99
LND. 22-177	LND. 51-68
LND. 22-192	
LND. 23-19	
LND. 25-93	
LND. 29-3	
LND. 31-48	



PREPARED BY: MIAMI COUNTY ENGINEER'S MAP DEPARTMENT  
PAUL P. HUELSKAMP, P.E., P.S., COUNTY ENGINEER  
DATE: SEPTEMBER 28, 2016 MDB  
REVISED: October 19, 2022 JVINCENT

SEE PLAT 32-A

SEE PLAT 32-A

A  
L32-010640  
0.356 AC.  
LND. 44-148  
LND. 15-13  
& D.E. BACHER  
2018OR-02152

MOTE ROAD #57  
(NO RECORD OF WIDTH)