

UNION TWP.
MIAMI COUNTY, OHIO

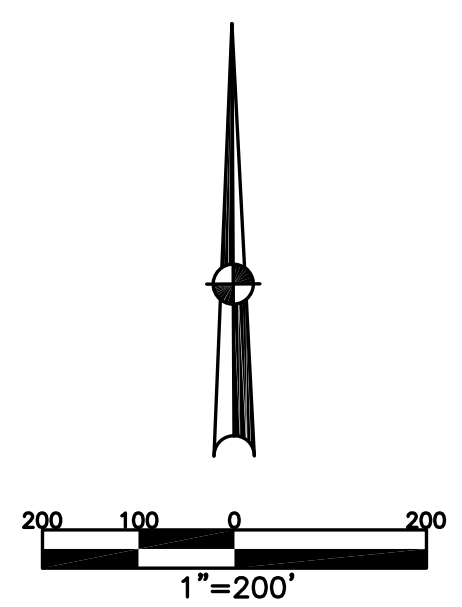
SECTION 32 TOWN 6 RANGE 5
SE 1/4

PARCEL NUMBER
L32-
PLAT 32-A

JAY ROAD 60' R/W
#56

SEE PLAT
32-B

BAKER ROAD
T-58



ABBREVIATION LEGEND		
2014OR-07759	=	RECORDER'S DOCUMENT NUMBER
OR 257-619	=	OFFICIAL RECORD 257 PAGE 619
D.B. 613-172	=	DEED BOOK 613, PAGE 172
REC. 15-72	=	RECORDER'S PLAT BOOK 15, PAGE 72
LND. 33-15	=	LAND SURVEY VOLUME 33, PAGE 15
LOT 19-12	=	LOT SURVEY VOLUME 19, PAGE 12
R.R. 8-29	=	ROAD RECORD VOLUME 8, PAGE 29
R/W	=	RIGHT OF WAY
C	=	CENTERLINE
AC.	=	ACRES
TWP.	=	TOWNSHIP
TR.	=	TRACT
②	=	LOT CREATED BY RECORDER'S PLAT

LINE LEGEND		
	=	Blow-up Boundary
	=	Property Line
	=	Lot Split Line
	=	Section Line
	=	Centerline
	=	Right-of-Way Line
	=	Corporation Line

SURVEY INDEX		
LND. 3-244	LND. 56-141	RD. REC. 6-214
LND. 6-165	LND. 58-18	REC. 9-76
LND. 7-52	LND. 58-70	REC. 9-135
LND. 15-77		
LND. 15-144		
LND. 15-160		
LND. 16-88		
LND. 19-50		
LND. 21-101		
LND. 23-37		
LND. 24-23		
LND. 25-93		
LND. 30-159		
LND. 32-4		
LND. 35-29		
LND. 35-57		
LND. 49-99		
LND. 51-68		
LND. 56-107		

R.D. FREEZE SUBDIVISION
REC. 9-76
LOTS 1-10

CYNTHIA A. ULLERY
2021OR-06156
2017OR-02886
2017OR-03443, TOD

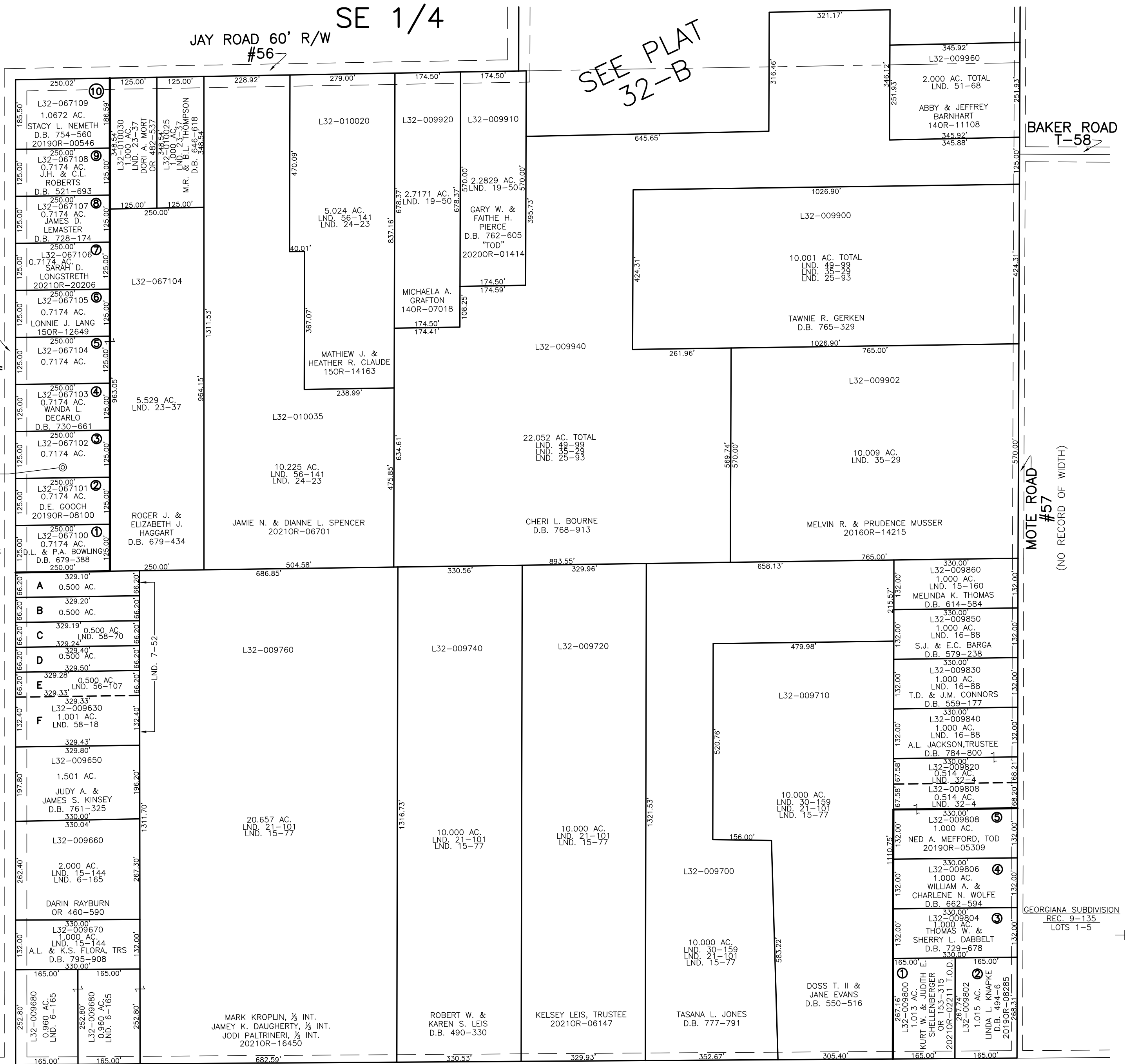
L32-009580
DANIEL L. STEVENS
2021OR-18327

L32-009590
R.A. &
P.J. JUDD, TRS
OR 38-523

L32-009610
DARIN E. RAYBURN
D.B. 671-883

L32-009620
DANE L. MARTIN
15OR-07248

L32-009680
CHRIS L. & MARY
B. HECKMAN
2017OR-07816



MOTE ROAD
#57
(NO RECORD OF WIDTH)

GEORGIANA SUBDIVISION
REC. 9-135
LOTS 1-5

PREPARED BY: MIAMI COUNTY ENGINEER'S MAP DEPARTMENT
PAUL P. HUELSKAMP, P.E., P.S., COUNTY ENGINEER
DATE: SEPTEMBER 22, 2016 MDB
REVISED: October 22, 2021 MSTMOS

NORTH MONTGOMERY COUNTY LINE RD. WEST 40' R/W
#2

RD. REC. 6-214