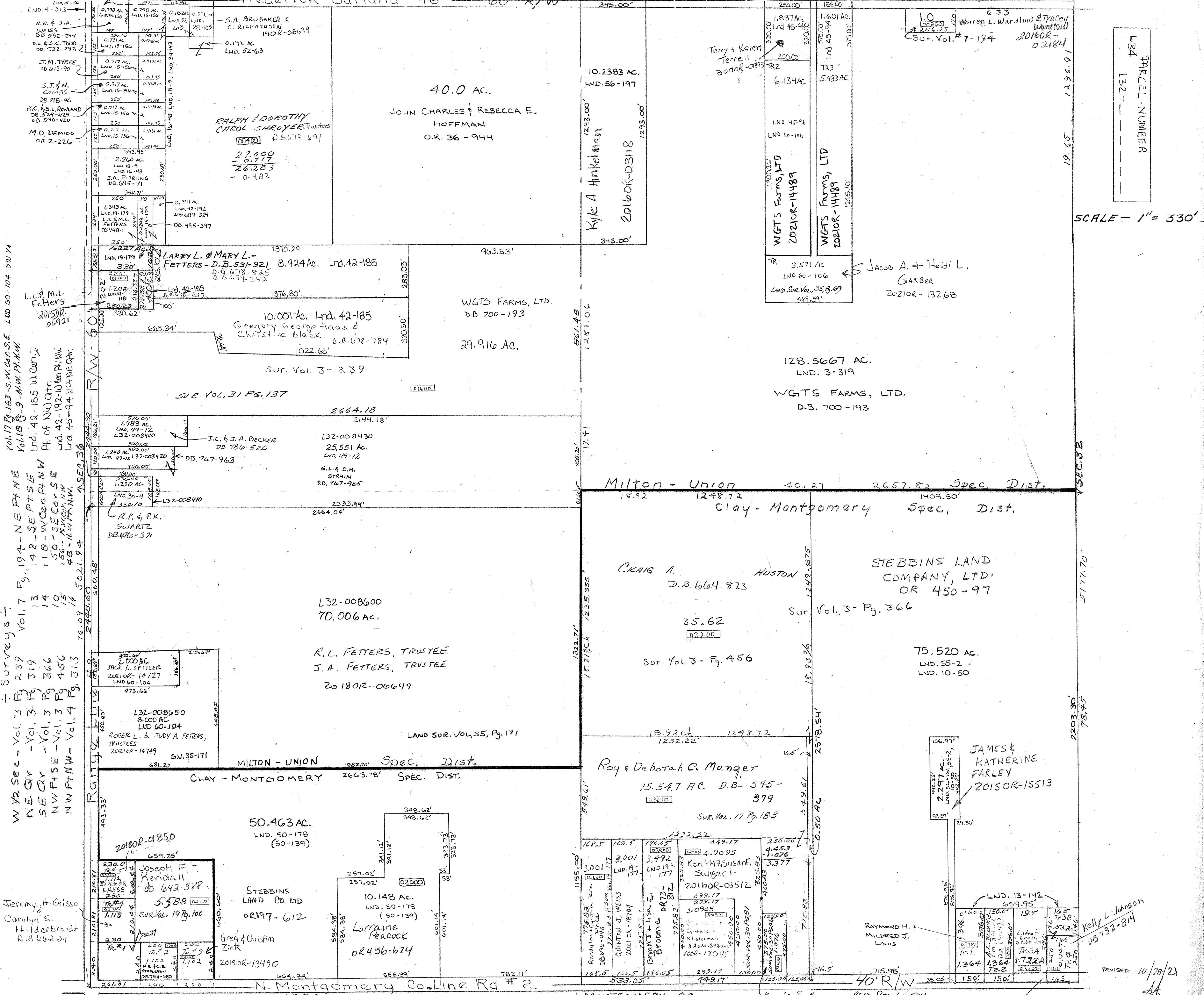


Frederick-Garland #48 60' R/W



Vol. 17 Pg. 183 - S.W. Cor. S.E. LND 60-104 SW 1/4

Vol. 18 Pg. 9 - NW 1/4 PM NW

Vol. 17 Pg. 183 - S.W. Cor. S.E. LND 60-104 SW 1/4

Vol. 18 Pg. 9 - NW 1/4 PM NW

Surveys - Vol. 3 Pg. 239  
Vol. 7 Pg. 13  
Vol. 13 Pg. 319  
Vol. 14 Pg. 14  
Vol. 15 Pg. 366  
Vol. 16 Pg. 456  
Vol. 17 Pg. 313

Jeremy H. Grisso  
Carolyn S.  
Hilderbrandt  
D.B. 662-24

Joseph F. Kendall  
db 642-388  
5.588  
Sur. Vol. 19 Pg. 100

Joseph F. Kendall  
db 642-388  
5.588  
Sur. Vol. 19 Pg. 100

Joseph F. Kendall  
db 642-388  
5.588  
Sur. Vol. 19 Pg. 100

Joseph F. Kendall  
db 642-388  
5.588  
Sur. Vol. 19 Pg. 100

Joseph F. Kendall  
db 642-388  
5.588  
Sur. Vol. 19 Pg. 100

Joseph F. Kendall  
db 642-388  
5.588  
Sur. Vol. 19 Pg. 100

Joseph F. Kendall  
db 642-388  
5.588  
Sur. Vol. 19 Pg. 100

Joseph F. Kendall  
db 642-388  
5.588  
Sur. Vol. 19 Pg. 100

Joseph F. Kendall  
db 642-388  
5.588  
Sur. Vol. 19 Pg. 100

Parcel Number

SCALE - 1" = 330'

REVISED: 10/28/21