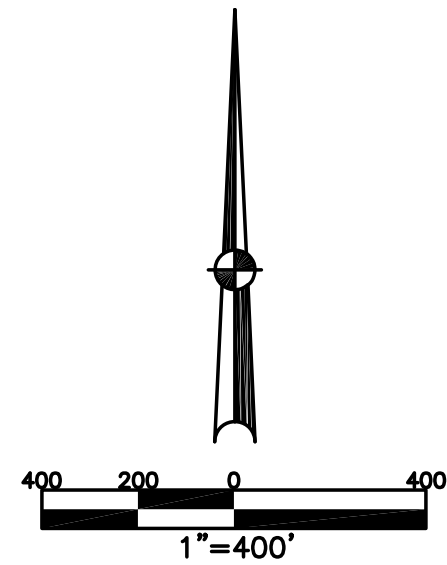


UNION TOWNSHIP
MIAMI COUNTY, OHIO

SECTION 30 TOWN 6 RANGE 5

PARCEL NUMBER
L32-_____

PLAT 30

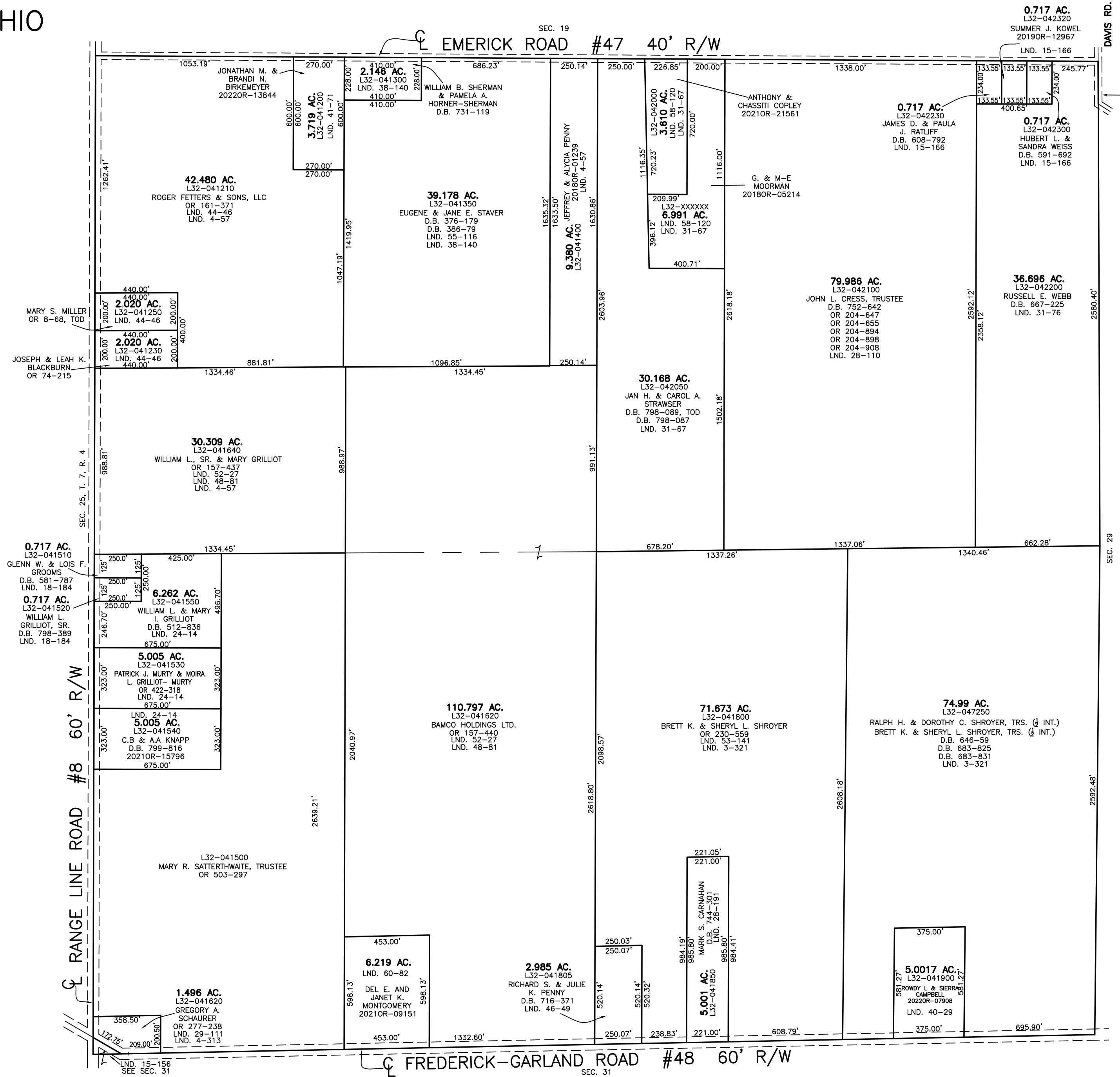


ABBREVIATION LEGEND	
20140R-07759	= RECORDER'S DOCUMENT NUMBER
OR 257-619	= OFFICIAL RECORD 257 PAGE 619
D.B. 613-172	= DEED BOOK 613, PAGE 172
REC. 15-72	= RECORDER'S PLAT BOOK 15, PAGE 72
LND. 33-15	= LAND SURVEY VOLUME 33, PAGE 15
LOT 19-12	= LOT SURVEY VOLUME 19, PAGE 12
R.R. 8-29	= ROAD RECORD VOLUME 8, PAGE 29
R/W	= RIGHT OF WAY
CL	= CENTERLINE
AC.	= ACRES
TWP.	= TOWNSHIP
TR.	= TRACT
②	= LOT CREATED BY RECORDER'S PLAT

LINE LEGEND	
	Blow-up Boundary
	Property Line
	Lot Split Line
	Section Line
	Centerline
	Right-of-Way Line
	Corporation Line

SURVEY INDEX	
NORTHEAST QUARTER	
LND. 15-166	
LND. 28-110	
LND. 31-67	
LND. 31-76	
LND. 58-120	
SOUTHEAST QUARTER	
LND. 3-321	
LND. 28-191	
LND. 40-29	
LND. 46-49	
LND. 53-146	
SOUTHWEST QUARTER	
LND. 4-313	
LND. 15-156	
LND. 18-184	
LND. 24-14	
LND. 29-111	
LND. 48-81	
LND. 52-27	
LND. 60-82	
NORTHWEST QUARTER	
LND. 4-57	
LND. 38-140	
LND. 41-71	
LND. 44-46	
LND. 48-81	
LND. 52-27	
LND. 55-116	

PREPARED BY: MIAMI COUNTY ENGINEER'S MAP DEPARTMENT
PAUL P. HUELSKAMP, P.E., P.S., COUNTY ENGINEER
DATE: NOVEMBER 1, 2016 CH
REVISED: September 21, 2022 APALMER



FREDERICK-GARLAND ROAD #48 60' R/W