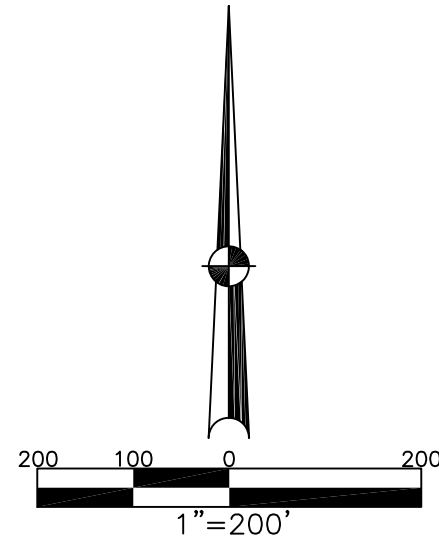


UNION TWP.
MIAMI COUNTY, OHIO

SOUTHEAST QUARTER
SECTION 29 TOWN 6 RANGE 5

PARCEL NUMBER
L32-_____

PLAT 29B



ABBREVIATION LEGEND	
2014OR-07759	= RECORDER'S DOCUMENT NUMBER
OR 406-509	= OFFICIAL RECORD 406 PAGE 509
D.B. 677-326	= DEED BOOK 677, PAGE 326
REC. 18-87	= RECORDER'S PLAT BOOK 18, PAGE 87
LND. 56-145	= LAND SURVEY VOLUME 56, PAGE 145
LOT 24-200	= LOT SURVEY VOLUME 24, PAGE 200
R.R. 8-18	= ROAD RECORD VOLUME 8, PAGE 18
R/W	= RIGHT OF WAY
C	= CENTERLINE
AC.	= ACRES
TWP.	= TOWNSHIP
TR.	= TRACT
IL	= INLOT

LINE LEGEND	
	Blow-up Boundary
	Property Line
	Lot Split Line
	Section Line
	Centerline
	Right-of-Way Line
	Corporation Line

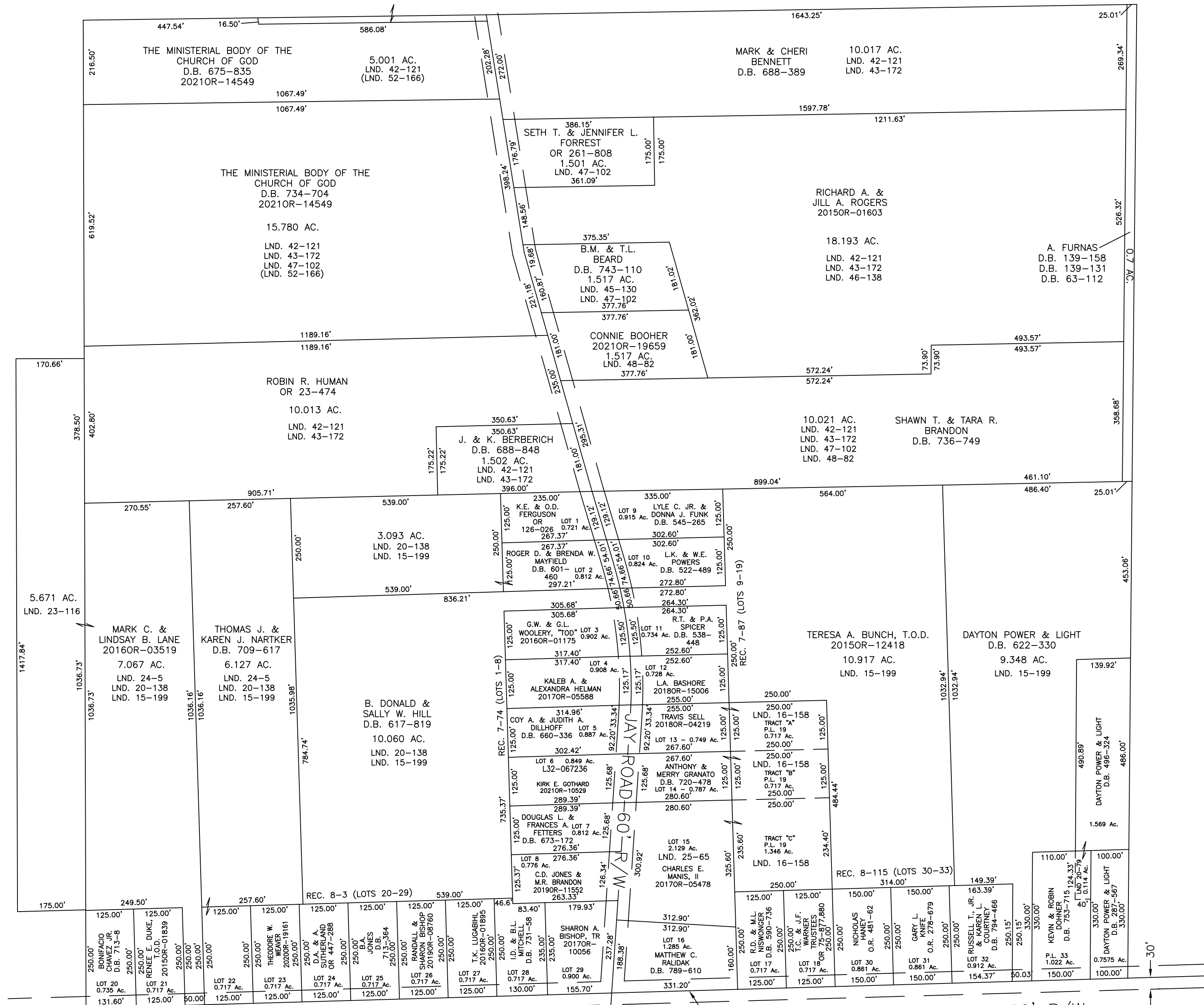
SURVEY INDEX	
LND. 15-199	REC. 7-74
LND. 16-138	REC. 7-87
LND. 20-79	REC. 8-3
LND. 20-158	REC. 8-115
LND. 24-5	
LND. 25-65	
LND. 42-121	
LND. 43-172	
LND. 45-130	
LND. 46-138	
LND. 47-102	
LND. 48-82	

GREENBRIAR ACRES - SECTION ONE
REC. 7-74
LOTS 1-8

GREENBRIAR ACRES - SECTION TWO
REC. 7-87
LOTS 9-19

GREENBRIAR ACRES - SECTION THREE
REC. 8-3
LOTS 20-29

GREENBRIAR ACRES - SECTION FOUR
REC. 8-115
LOTS 30-33



PREPARED BY: MIAMI COUNTY ENGINEER'S MAP DEPARTMENT
PAUL P. HUELSKAMP, P.E., P.S., COUNTY ENGINEER
DATE: JULY, 2005
REVISED: November 12, 2021 JZWEZ