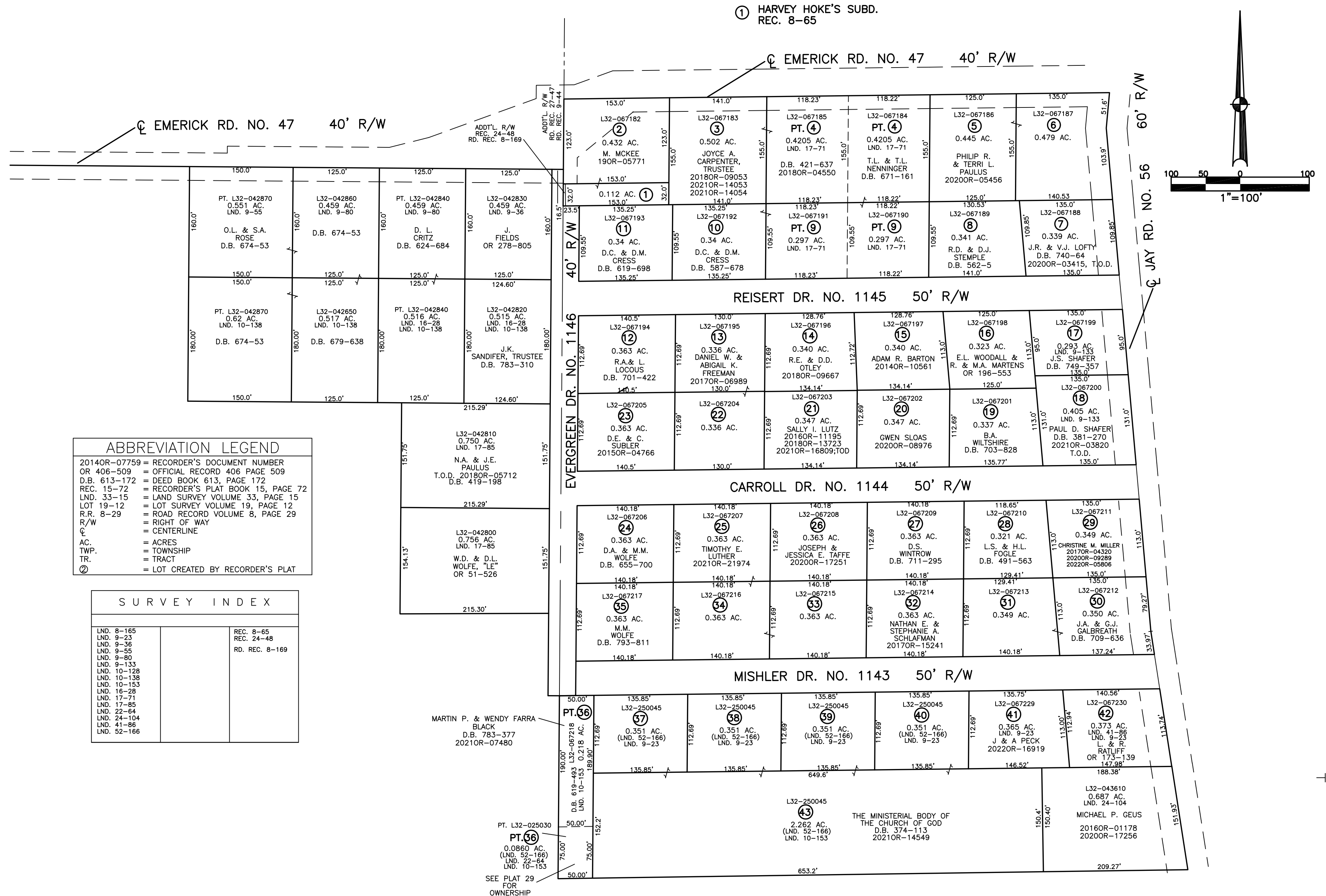


UNION TOWNSHIP  
MIAMI COUNTY, OHIO

SECTION 29 TOWN 6 RANGE 5  
PART NORTHEAST & NORTHWEST QUARTERS

PLAT 29 A



**ABBREVIATION LEGEND**

20140R-07759	=	RECORDER'S DOCUMENT NUMBER
OR 406-509	=	OFFICIAL RECORD 406 PAGE 509
D.B. 613-172	=	DEED BOOK 613, PAGE 172
REC. 15-72	=	RECORDER'S PLAT BOOK 15, PAGE 72
LND. 33-15	=	LAND SURVEY VOLUME 33, PAGE 15
LOT 19-12	=	LOT SURVEY VOLUME 19, PAGE 12
R.R. 8-29	=	ROAD RECORD VOLUME 8, PAGE 29
R/W	=	RIGHT OF WAY
CL	=	CENTERLINE
AC.	=	ACRES
TWP.	=	TOWNSHIP
TR.	=	TRACT
Ⓢ	=	LOT CREATED BY RECORDER'S PLAT

**SURVEY INDEX**

LND. 8-165	REC. 8-65
LND. 9-23	REC. 24-48
LND. 9-36	
LND. 9-55	RD. REC. 8-169
LND. 9-80	
LND. 9-133	
LND. 10-128	
LND. 10-138	
LND. 10-153	
LND. 16-28	
LND. 17-71	
LND. 17-85	
LND. 22-64	
LND. 24-104	
LND. 41-86	
LND. 52-166	

PREPARED BY: MIAMI COUNTY ENGINEER'S MAP DEPARTMENT  
PAUL P. HUELSKAMP, P.E., P.S., COUNTY ENGINEER  
DATE: SEPTEMBER 12, 2013  
REVISED: April 13, 2022 APALMER