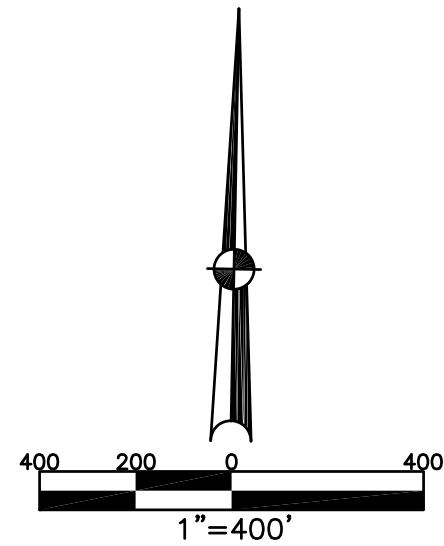


UNION TWP.
MIAMI COUNTY, OHIO

SECTION 27 TOWN 6 RANGE 5

PARCEL NUMBER
L32-045000

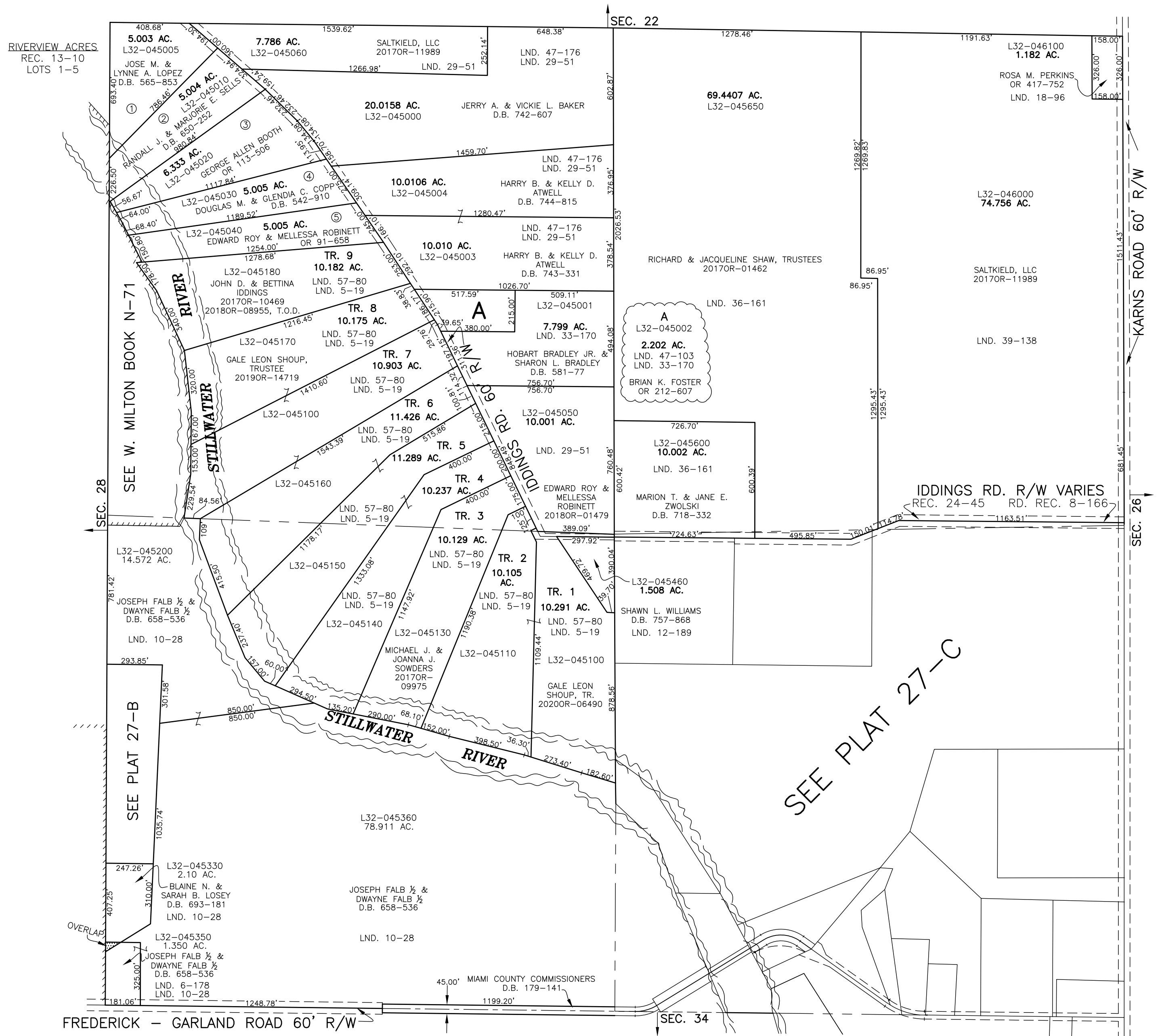
PLAT 27



ABBREVIATION LEGEND		
20140R-07759	=	RECORDER'S DOCUMENT NUMBER
OR 257-619	=	OFFICIAL RECORD 257 PAGE 619
D.B. 613-172	=	DEED BOOK 613, PAGE 172
REC. 15-72	=	RECORDER'S PLAT BOOK 15, PAGE 72
LND. 33-15	=	LAND SURVEY VOLUME 33, PAGE 15
LOT 19-12	=	LOT SURVEY VOLUME 19, PAGE 12
R.R. 8-29	=	ROAD RECORD VOLUME 8, PAGE 29
R/W	=	RIGHT OF WAY
C	=	CENTERLINE
AC.	=	ACRES
TWP.	=	TOWNSHIP
TR.	=	TRACT
②	=	LOT CREATED BY RECORDER'S PLAT

LINE LEGEND		
	=	Blow-up Boundary
	=	Property Line
	=	Lot Split Line
	=	Section Line
	=	Centerline
	=	Right-of-Way Line
	=	Corporation Line

SURVEY INDEX		
NORTHEAST QUARTER		
LND. 18-96	REC. 24-45	RD. REC. 8-166
LND. 36-161		
LND. 39-138		
SOUTHEAST QUARTER		
SOUTHWEST QUARTER		
LND. 5-19		
LND. 6-38		
LND. 6-178		
LND. 10-28		
LND. 12-189		
LND. 57-80		
NORTHWEST QUARTER		
LND. 5-19	REC. 13-10	
LND. 6-38		
LND. 29-51		
LND. 33-170		
LND. 47-103		
LND. 47-176		
LND. 57-80		



PREPARED BY: MIAMI COUNTY ENGINEER'S MAP DEPARTMENT
PAUL P. HUELSKAMP, P.E., P.S., COUNTY ENGINEER
DATE: MAY 30, 2014 MB
REVISED: May 22, 2020 MHEMSWORTH