

SMOA NUMBER
L32-UN022

SCALE - 1" = 330'

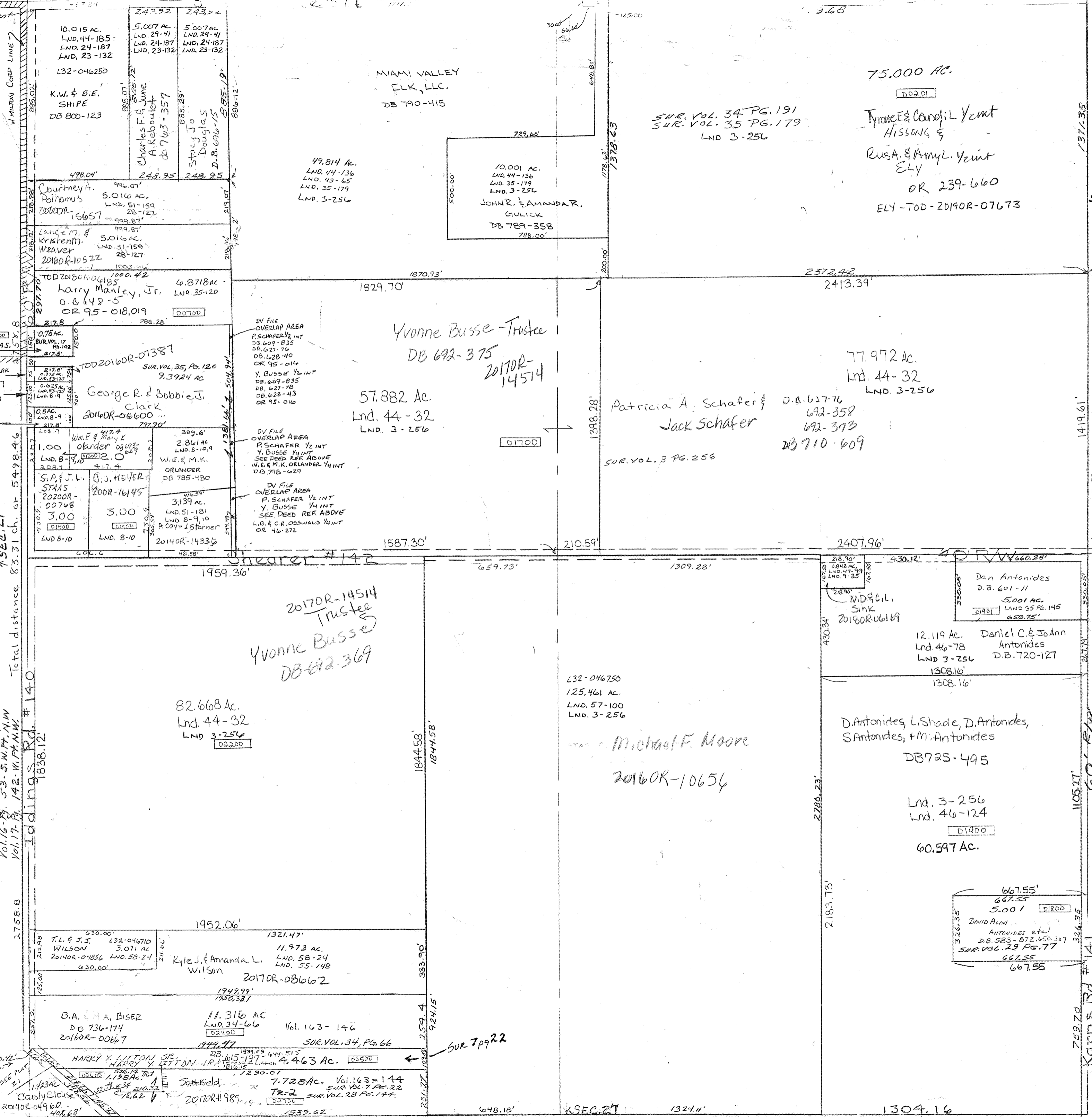
NORTH

Lnd. 40-124 E. Pt. SE Qtr.
LND. 51-159 W. PT. NW. QTR.
LND. 55-148 SW PT. SW QTR.

DB 485-143
FRANK J. JR. & MARLAS, S
WRIGHT
G.R. & B.J. CLARK
OR 210-074
TOD 20160R-07387
S.C. MAESS
OR 228-093
EUGENE ROSS
D.B. 731-142

Lnd. 44-32 NW Cor SW Qtr.,
SE Cor NW Qtr.,
(S. Pt. NE Qtr.)
Lnd. 44-185 NW Cor NW Qtr.,
Lnd. 40-78 NE Pt. SE Qtr.

Surreys -
Vol. 3 - Pg. 256 Whole Section
Vol. 7 - Pg. 22 - S Pt SW
Vol. 8 - Pg. 9 - SW Pt + NW
Vol. 8 - Pg. 10 - SW Pt + NW
Vol. 9 - Pg. 35 - N Camp SE
Vol. 16 - Pg. 53 - S.W. Pt. NW
Vol. 17 - Pg. 142 - W. Pt. NW



10.015 AC.
LND. 44-185
LND. 24-187
LND. 23-132
L32-046250
K.W. & B.E. SHIPE
DB 800-123

5.007 AC.
LND. 29-41
LND. 24-187
LND. 23-132
243-92
243-92
5.007 AC.
LND. 29-41
LND. 24-187
LND. 23-132
243-92
243-92
5.007 AC.
LND. 29-41
LND. 24-187
LND. 23-132
243-92
243-92

MIAMI VALLEY
ELK, LLC.
DB 790-415

75.000 AC.
D0201
Tyrone E. & Condi L. Yount
HISSONS &
RUSA. & Amy L. Yount
ELY
OR 239-660
ELY-TOD-20190R-07673

10.001 AC.
LND. 44-136
LND. 35-179
LND. 3-256
JOHN R. & AMANDA R.
GULICK
DB 789-358
788.00'

49.814 AC.
LND. 44-136
LND. 43-65
LND. 35-179
LND. 3-256

Courtney A. Polnomus
5.016 AC.
LND. 51-159
LND. 28-127
20180R-10522

0.75 AC.
SUR. VOL. 17
Pg. 142
217.8

George R. & Bobbie J. Clark
20160R-06600

1.00
LND. 8-10
3.00
LND. 8-10

S.A. & J.L. STAAS
20200R-00768
3.00
LND. 8-10

J.J. HEVER
200R-16145
3.00
LND. 8-10

Yvonne Busse-Trustee
DB 692-375
20170R-14514
57.882 AC.
Lnd. 44-32
LND. 3-256

Patricia A. Schafer & Jack Schafer
D.B. 627-74
692-358
692-373
DB 710-609
77.972 AC.
Lnd. 44-32
LND. 3-256

W.M.E. & M.K. ORLANDER
DB 785-430
3.139 AC.
LND. 51-181
LND. 8-9, 10
A Copy of Starnor
20140R-14336

Shearer #142
20170R-14514
Trustee
Yvonne Busse
DB 692-369
82.668 AC.
Lnd. 44-32
LND. 3-256
D0200

Michael F. Moore
20160R-10656
125.461 AC.
LND. 57-100
LND. 3-256

Dan Antonides
D.B. 601-11
5.001 AC.
LAND 35 PG. 145
659.75'

D. Antonides, L. Shade, D. Antonides, S. Antonides, + M. Antonides
DB 725-495
12.119 AC.
Lnd. 46-78
LND. 3-256
D.B. 720-127
1308.16'
1308.16'
Lnd. 3-256
Lnd. 46-124
D1900
60.597 AC.

667.55'
667.55
5.001
D1800
DAVID ALAN
ANTONIDES et al
D.B. 583-872, 650-307
SUR. VOL. 29 PG. 77
667.55
667.55

T.L. & J.J. WILSON
L32-046710
3.071 AC
20140R-04856
LND. 58-24
630.00'

Kyle J. & Amanda L. Wilson
11.973 AC.
LND. 58-24
LND. 55-148
20170R-DB662

B.A. & M.A. BISER
DB 736-174
20160R-00667
11.316 AC
LND. 34-66
Vol. 163-146
D2400
1449.47
SUR. VOL. 34, PG. 66

HARRY Y. LITTON SR.
DB 615-197
444.515
HARRY Y. LITTON JR.
181618
4.463 AC.
D0300

Scottfield
7.728 AC.
Vol. 163-144
SUR. VOL. 7 PG. 22
TR-2
SUR. VOL. 28 PG. 144
20170R-1989

Carly Clouse
20140R-04960
408.68'