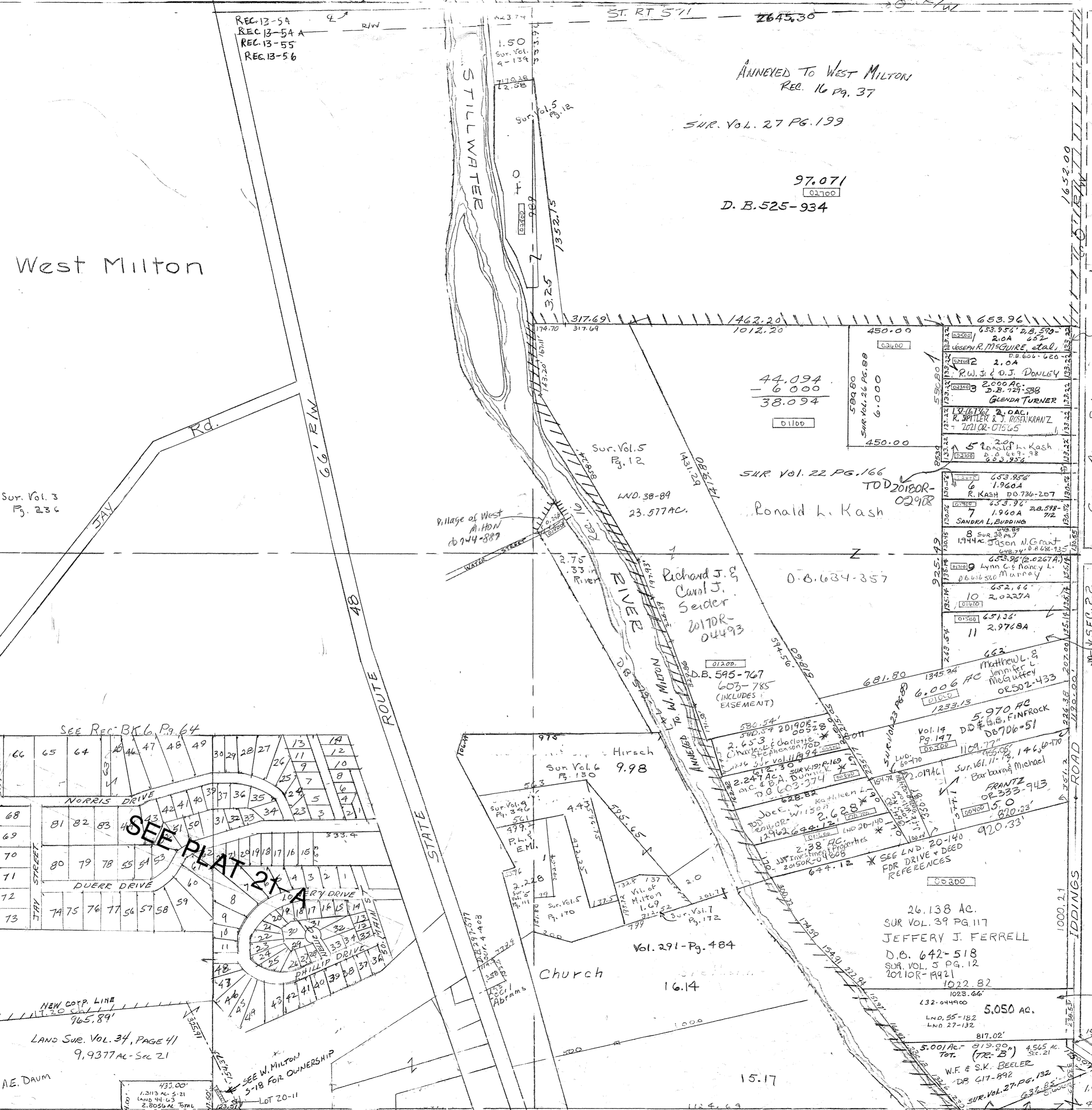
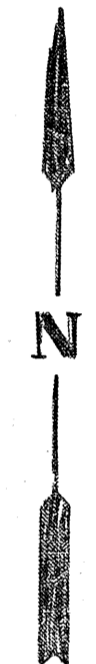


PARCEL NUMBER
L32

SCALE - 1" = 330'



- Vol 1 Pg 19 - Brumbaugh Plat
- 39 - Annexation
- 61 - Annexation
- 94 - Cen Pt SE
- 146 - E Cen Pt SE
- 147 - E Cen Pt SE
- Vol 9 Pg 62 - Detachment From Milton
- Vol 9 Pg 99 - GREEN ACRES SUBD. #1
- Vol 38 - 89 - NE F S E 1/4
- Vol 38 - 89 - NE F S E 1/4
- Vol 38 - 89 - NE F S E 1/4

- Vol 150 - W Milton
- 124 - W Milton
- 130 - W Milton
- 143 - W Milton
- 172 - W Milton
- 55 - Duerr Plat
- 200 - Duerr Plat
- 20 - Duerr Plat
- 63 - Duerr Plat
- Vol 5 Pg 182 - Cen Pt S 1/2
- 236 - W Pt NW
- 134 - NE Pt NW
- 346 - W Milton
- 366 - W Milton
- 403 - W Milton
- 12 - W.C.D.
- 111 - W. Milton

See Rec. Vol. 9 Pg. 62 For Detachment

Trustees
20226B-11215

Green Acres Sub.
#1
Rec. 9-94

Ayla Diamond Bent
Miranda Maynard
Trustees
OR 253-496

Mark A Wells &
Magdalena M. Wells, TRS
2023OR-00165

Carolyn Clou...

ANNEXED TO WEST MILTON
REC. 16 PG. 37

SUR. Vol. 27 PG. 199

97.071
D. B. 525-934

SUR. Vol. 22 PG. 166
TOD 2018OR-0298
Ronald L. Kash

Richard J. &
Carol J. Seider
2017OR-04493

D.B. 595-767
603-785
(INCLUDES EASEMENT)

Matthew L. &
Jennifer L. McGuffey
OR 502-433

26.138 AC.
SUR VOL. 39 PG. 117
JEFFERY J. FERRELL
D.B. 642-518
SUR VOL. 5 PG. 12
2011OR-19421

5.050 AC.
LND. 55-182
LND 27-132

W.F. & S.K. BEELER
DB 417-892
SUR VOL. 27 PG. 132

REVISED 1-6-23 JA

SEC. 28

LAND SUR. VOL. 34, PAGE 41
9.9377 AC - Sec 21

See Rec. Vol. 9 Pg. 62 For Detachment



FOR OWNERSHIP
SEE SEC. 28