

UNION TWP.
MIAMI COUNTY, OHIO

SECTION 18 TOWN 6 RANGE 5
NE 1/4

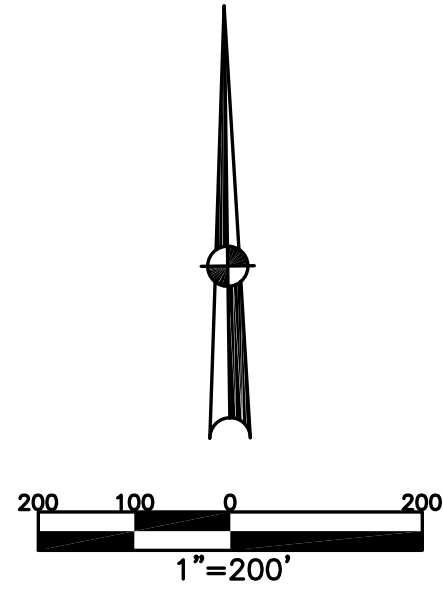
PARCEL NUMBER
L32-_____

PLAT 18-A

TRIANGLE ACRES SUBDIVISION
REC. 9-112
LOTS 1-22

TRIANGLE ACRES SUBDIVISION
REPLAT OF LOT 22
REC. 9-114
LOTS 23-35

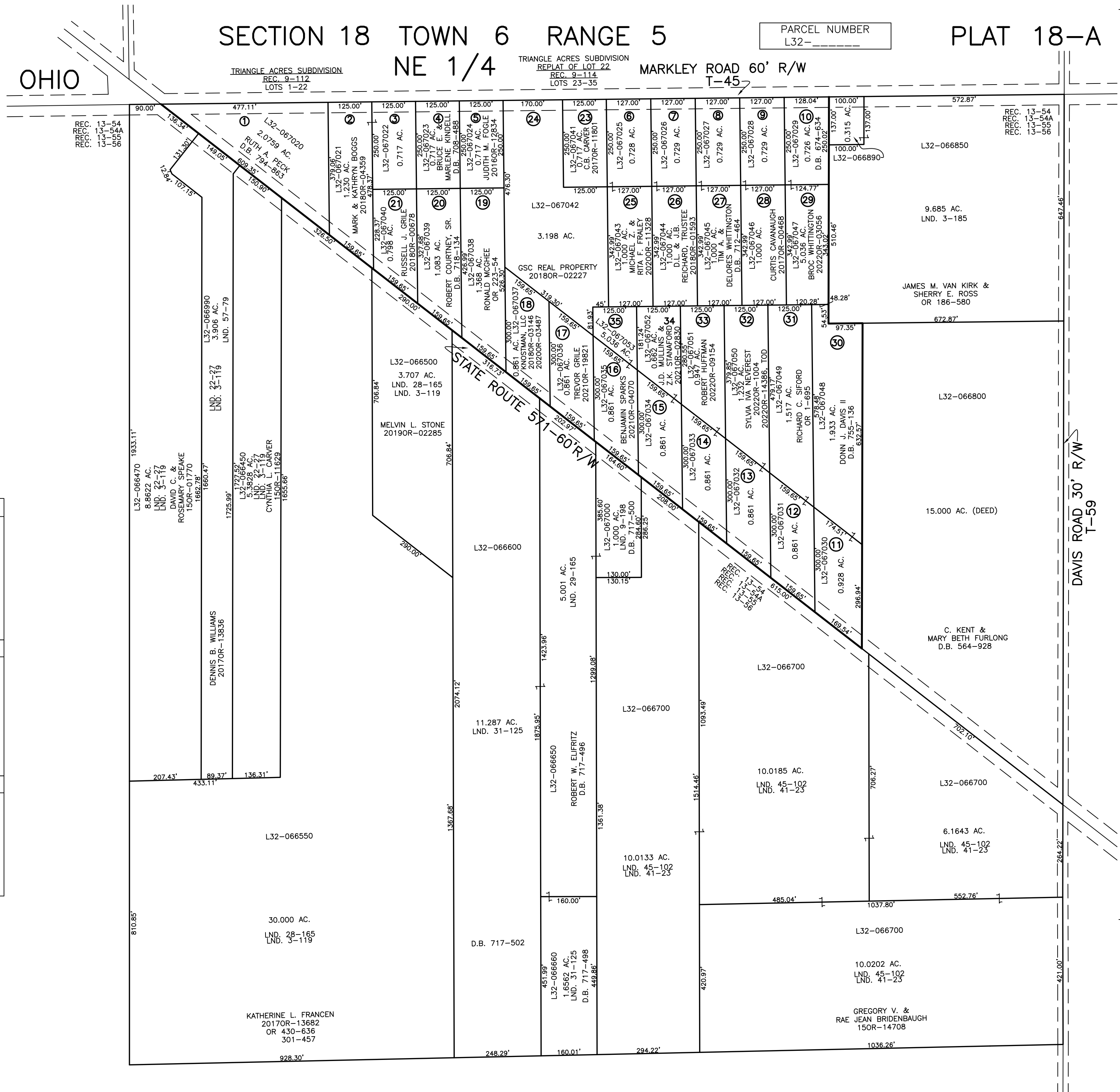
MARKLEY ROAD 60' R/W
T-45



ABBREVIATION LEGEND	
20140R-07759	= RECORDER'S DOCUMENT NUMBER
OR 257-619	= OFFICIAL RECORD 257 PAGE 619
D.B. 613-172	= DEED BOOK 613, PAGE 172
REC. 15-72	= RECORDER'S PLAT BOOK 15, PAGE 72
LND. 33-15	= LAND SURVEY VOLUME 33, PAGE 15
LOT 19-12	= LOT SURVEY VOLUME 19, PAGE 12
R.R. 8-29	= ROAD RECORD VOLUME 8, PAGE 29
R/W	= RIGHT OF WAY
C.	= CENTERLINE
AC.	= ACRES
TWP.	= TOWNSHIP
TR.	= TRACT
②	= LOT CREATED BY RECORDER'S PLAT

LINE LEGEND	
	Blow-up Boundary
	Property Line
	Lot Split Line
	Section Line
	Centerline
	Right-of-Way Line
	Corporation Line

SURVEY INDEX	
LND. 3-119	REC. 9-112
LND. 3-185	REC. 9-114
LND. 9-198	REC. 13-54
LND. 22-27	REC. 13-54A
LND. 28-165	REC. 13-55
LND. 29-165	REC. 13-56
LND. 31-125	
LND. 41-23	
LND. 45-102	
LND. 57-79	



PREPARED BY: MIAMI COUNTY ENGINEER'S MAP DEPARTMENT
PAUL P. HUELSKAMP, P.E., P.S., COUNTY ENGINEER
DATE: JUNE 28, 2016 MB

REVISED: October 3, 2022 JVINCENT