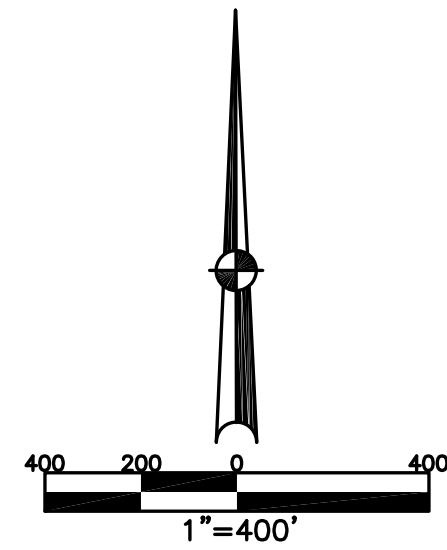


UNION TWP.  
MIAMI COUNTY, OHIO

SECTION 15 TOWN 7 RANGE 4

PARCEL NUMBER  
L32-00000

PLAT 15



\*NOTE: 30' R/W SOUTH SIDE OF HALL ROAD THRU SUBDIVISION

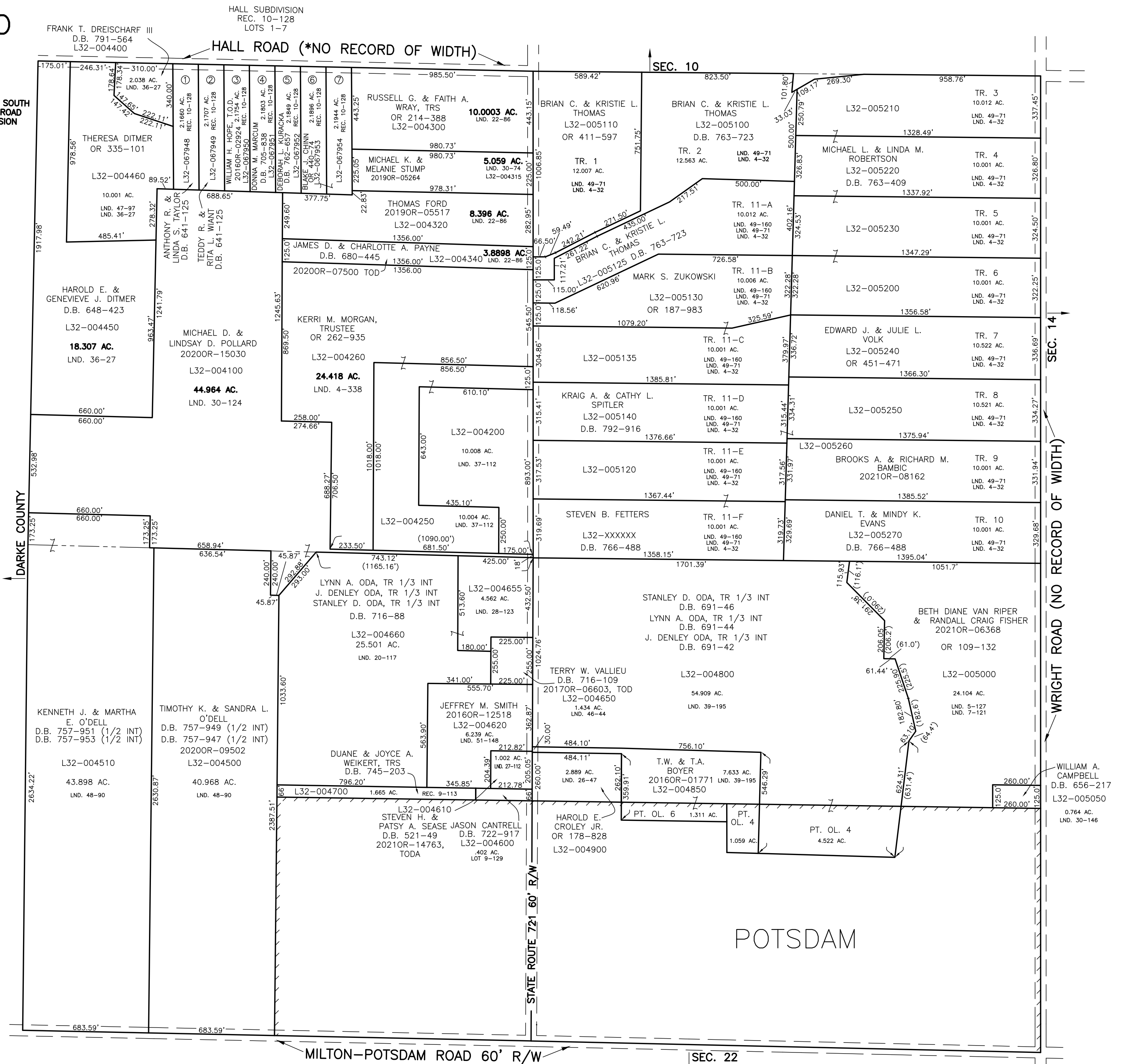
ABBREVIATION LEGEND		
20140R-07759	=	RECORDER'S DOCUMENT NUMBER
OR 257-619	=	OFFICIAL RECORD 257 PAGE 619
D.B. 613-172	=	DEED BOOK 613, PAGE 172
REC. 15-72	=	RECORDER'S PLAT BOOK 15, PAGE 72
LND. 33-15	=	LAND SURVEY VOLUME 33, PAGE 15
LOT 19-12	=	LOT SURVEY VOLUME 19, PAGE 12
R.R. 8-29	=	ROAD RECORD VOLUME 8, PAGE 29
R/W	=	RIGHT OF WAY
⊕	=	CENTERLINE
AC.	=	ACRES
TWP.	=	TOWNSHIP
TR.	=	TRACT
②	=	LOT CREATED BY RECORDER'S PLAT

LINE LEGEND	
	Blow-up Boundary
	Property Line
	Lot Split Line
	Section Line
	Centerline
	Right-of-Way Line
	Corporation Line

SURVEY INDEX		
NORTHEAST QUARTER		
LND. 4-32		
LND. 49-71		
LND. 49-160		
SOUTHEAST QUARTER		
LND. 5-127		
LND. 7-121		
LND. 26-47		
LND. 30-146		
LND. 3-195		
SOUTHWEST QUARTER		
LND. 20-117	REC. 9-113	LOT 9-129
LND. 27-112		
LND. 28-123		
LND. 46-44		
LND. 48-90		
LND. 51-148		
NORTHWEST QUARTER		
LND. 4-338	REC. 10-128	
LND. 22-86		
LND. 30-74		
LND. 30-124		
LND. 36-27		
LND. 37-112		
LND. 47-97		



PREPARED BY: MIAMI COUNTY ENGINEER'S MAP DEPARTMENT  
PAUL P. HUELSKAMP, P.E., P.S., COUNTY ENGINEER  
DATE: APRIL 9, 2014 MB

REVISED: August 24, 2021 MSTORMS