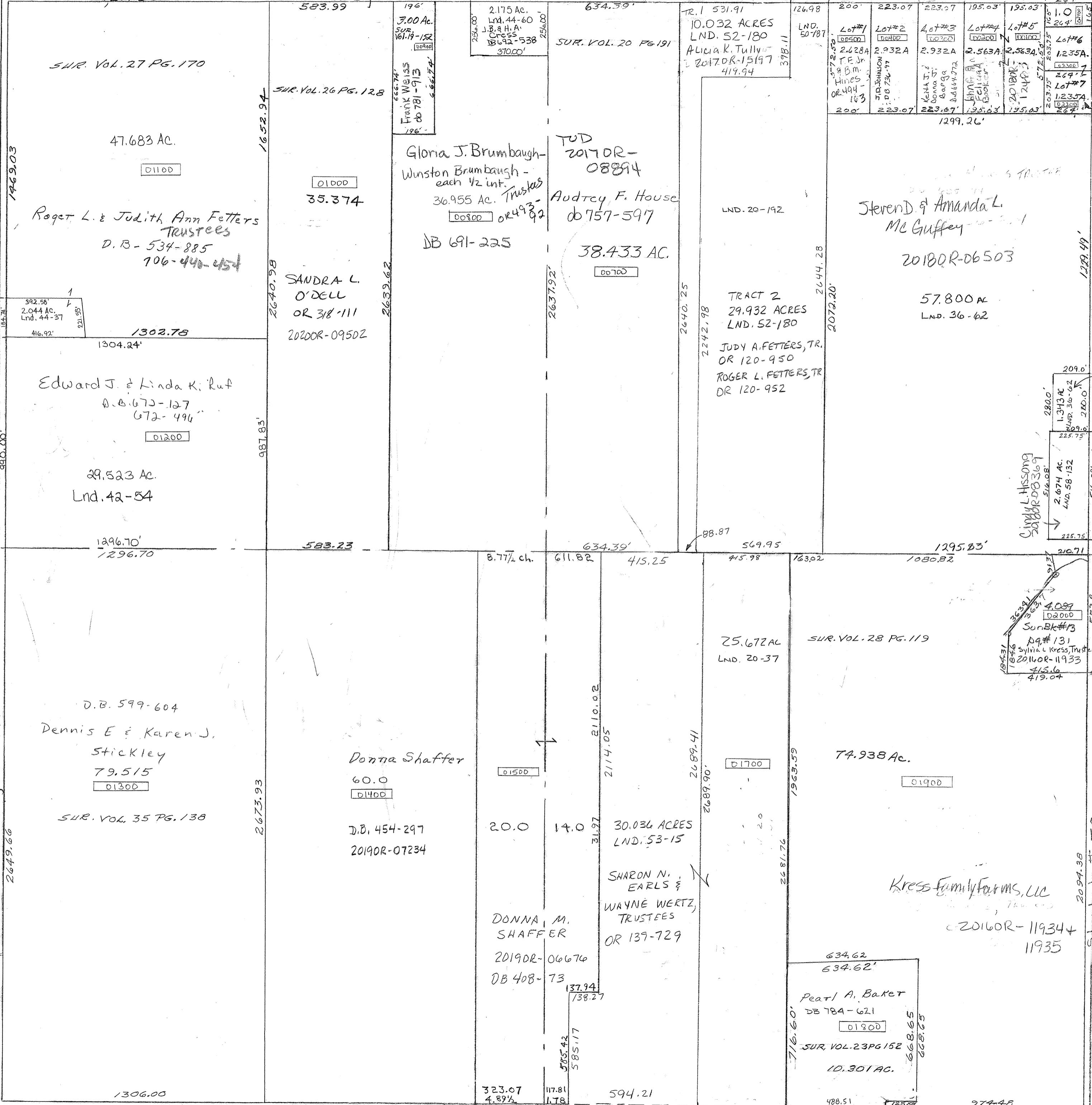


Markley # 45



Lot #	Acres	Lot #	Acres	Lot #	Acres	Lot #	Acres	Lot #	Acres
Lot #1	2.628A	Lot #2	2.932A	Lot #3	2.932A	Lot #4	2.563A	Lot #5	2.563A
Lot #6	1.235A	Lot #7	1.235A	Lot #8	1.235A	Lot #9	1.235A	Lot #10	1.235A

Joseph D. Johnson
OR 201-691

SUNNY ACRES
Subd. #1
Rec. Vol. 9-Pg. 20
R.E. & L.S. Creech
DB 742-492

55' R/W THRU
SUBDIVISION

SMDA NUMBER
L32-UN014D

J.L. & K.S.
McGuffey
DB 605-196

SCALE - 1" = 330'

1/4 SEC. 13

Shilton # 50

Vol. 20 Pg 37 Cen Pt SE
Lnd. 42-54-SW Pt. NW Qtr.
Lnd. 44-37 - W. Pt. NW Qtr.
Lnd. 44-60-NE Pt. NW Qtr.

Surveys
Vol. 3 Pg. 274 - E 1/2 NE Qtr
13 " 131 - NE Pt. SE
Rec. Vol. 9 " 20 - NE Pt. NE Sunny Acres #1

No record of width

Wright # 52