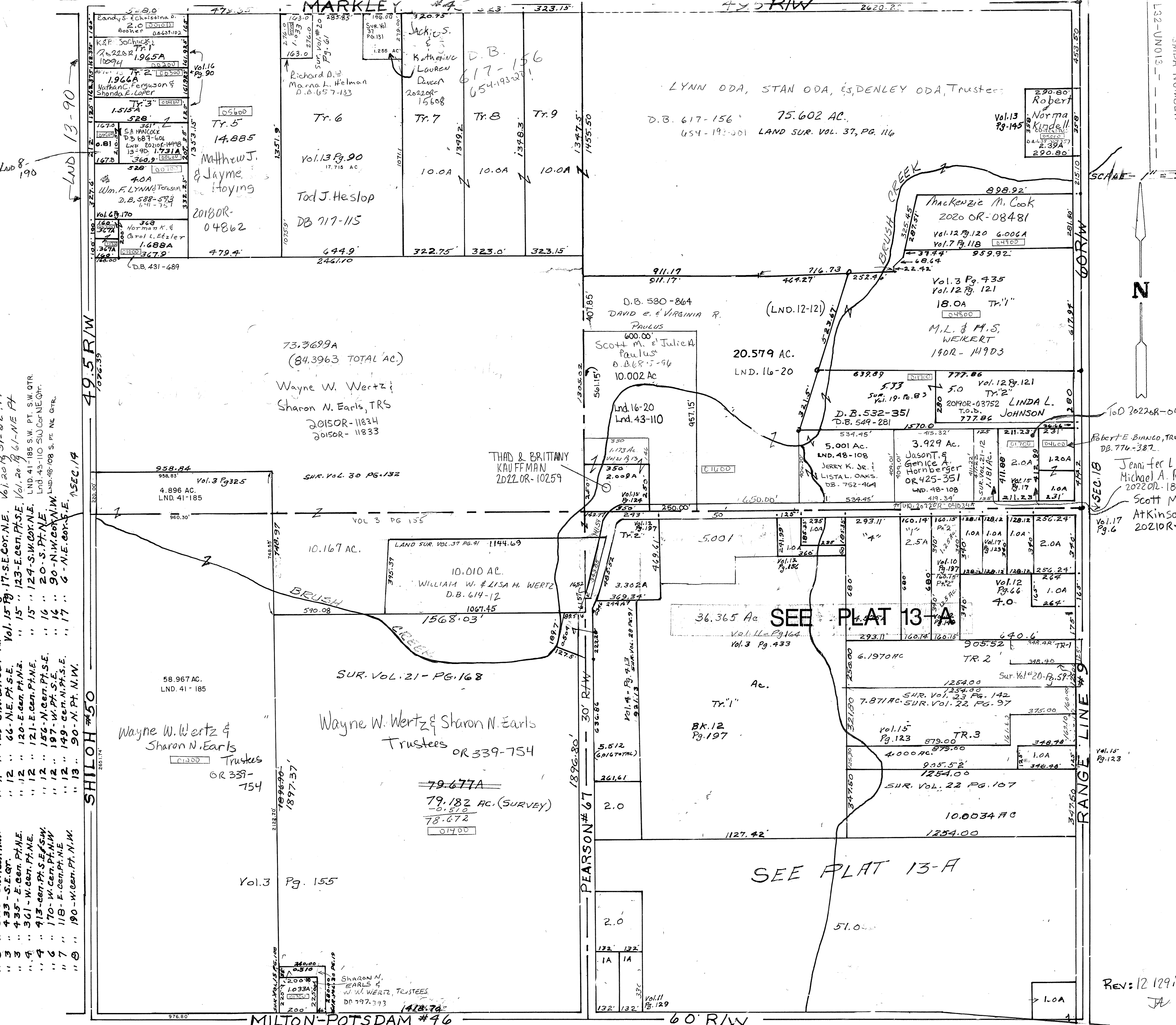


MARKLEY



Vol. 13 Pg. 145 N.E. Pt. N.E.
 Vol. 13 Pg. 145 S.E. Pt. N.E.
 Vol. 13 Pg. 145 S.W. Pt. N.E.
 Vol. 13 Pg. 145 N.W. Pt. N.E.
 Vol. 13 Pg. 145 N.E. Pt. S.E.
 Vol. 13 Pg. 145 S.E. Pt. S.E.
 Vol. 13 Pg. 145 S.W. Pt. S.E.
 Vol. 13 Pg. 145 N.W. Pt. S.E.
 Vol. 13 Pg. 145 N.E. Pt. N.W.
 Vol. 13 Pg. 145 S.E. Pt. N.W.
 Vol. 13 Pg. 145 S.W. Pt. N.W.
 Vol. 13 Pg. 145 N.W. Pt. N.W.

Surveys: -
 Vol. 3 Pg. 155 - S.W. QTR.
 Vol. 3 Pg. 155 - S.W. QTR. NW
 Vol. 3 Pg. 155 - S.E. QTR.
 Vol. 3 Pg. 155 - E. Cent. Pt. N.E.
 Vol. 3 Pg. 155 - W. Cent. Pt. N.E.
 Vol. 3 Pg. 155 - Cent. Pt. S.E. & S.W.
 Vol. 3 Pg. 155 - W. Cent. Pt. N.W.
 Vol. 3 Pg. 155 - E. Cent. Pt. N.E.
 Vol. 3 Pg. 155 - W. Cent. Pt. N.W.

SMDA NUMBER
 L32-UN013
 SCALE = 1" = 330'
 N

Robert E. Bianco, Trustee
 DB. 776-387
 Jennifer L. & Michael A. Reese
 2022 OR - 18140
 Scott M. Atkinson
 2021 OR - 17778

REV: 12/29/22
 JA

SHILOH #50

49.5 R/W

LAND 13-90

PEARSON #67

MILTON-POTSDAM #46

60 R/W

GOR/W

SEC. 18

RANGE LINE #9

SCALE

N

SEC. 17

Pg. 123

SEC. 29

Vol. 3 Pg. 155

~~79.677A~~
 79.182 AC. (SURVEY)
 -0.510
~~78.672~~
 01400

Wayne W. Wertz & Sharon N. Earls
 Trustees
 OR 339-754

Wayne W. Wertz & Sharon N. Earls
 Trustees
 OR 339-754

WILLIAM W. & LISA H. WERTZ
 D.B. 614-12
 1067.45

4.896 AC.
 LND. 41-185

Wayne W. Wertz & Sharon N. Earls, TRS
 2015OR-11834
 2015OR-11833

THAD & BRITANNY KAUFFMAN
 2022 OR - 10259

LND. 16-20
 LND. 43-110

Scott M. & Julie A. Paulus
 D.B. 685-96
 10.002 AC

73.3699A
 (84.3963 TOTAL AC.)

D.B. 580-864
 DAVID E. & VIRGINIA R. PAULUS
 600.00
 10.002 AC

20.579 AC.
 LND. 16-20

D.B. 532-351
 D.B. 549-281

Linda L. Johnson
 TR. 2
 777.86

Mackenzie M. Cook
 2020 OR-08481
 6.006A
 959.92

Robert & Norma Kindell
 Vol. 13 Pg. 145
 2.39A
 290.80

D.B. 617-156
 75.602 AC.
 US4-193-001 LAND SUR. VOL. 37, PG. 116

Matthew J. & Jayme Hoysing
 2018OR-04862

Vol. 13 Pg. 90
 17.715 AC.

Tr. 6
 Tr. 7
 Tr. 8
 Tr. 9

Tod J. Heslop
 DB 717-115

RANDY S. CHRISTINA
 2.0
 6665-102

K.P. SOCHACKI
 1.965A
 18294

Wm. F. LYNN & Teressa
 D.B. 588-593

D.B. 431-489

Vol. 3 Pg. 325
 4.896 AC.
 LND. 41-185

58.967 AC.
 LND. 41-185

Vol. 15 Pg. 123

36.365 Ac
 SEE PLAT 13-A
 Vol. 11 Pg. 164
 Vol. 3 Pg. 433

51.000

1.0A

772.35
 163.0
 276.0
 276.0
 276.0
 276.0

528'
 14.885

479.4'
 246.10

958.84
 958.83

10.167 AC.

590.08

58.967 AC.
 LND. 41-185

1896.80'

2.0
 1A 1A

132' 132'

320.75
 323.15

10.0A
 10.0A
 10.0A

322.75
 323.0'

401.85
 911.17
 911.17'

5.001

3.302A
 369.37

5.512
 (601677M)

261.61

2.0

132' 132'

320.75
 323.15

10.0A
 10.0A
 10.0A

322.75
 323.0'

401.85
 911.17
 911.17'

5.001

3.302A
 369.37

5.512
 (601677M)

261.61

2.0

132' 132'

320.75
 323.15

10.0A
 10.0A
 10.0A

322.75
 323.0'

401.85
 911.17
 911.17'

5.001

3.302A
 369.37

5.512
 (601677M)

261.61

2.0

132' 132'

320.75
 323.15

10.0A
 10.0A
 10.0A

322.75
 323.0'

401.85
 911.17
 911.17'

5.001

3.302A
 369.37

5.512
 (601677M)

261.61

2.0

132' 132'

320.75
 323.15

10.0A
 10.0A
 10.0A

322.75
 323.0'

401.85
 911.17
 911.17'

5.001

3.302A
 369.37

5.512
 (601677M)

261.61

2.0

132' 132'

320.75
 323.15

10.0A
 10.0A
 10.0A

322.75
 323.0'

401.85
 911.17
 911.17'

5.001

3.302A
 369.37

5.512
 (601677M)

261.61

2.0

132' 132'

320.75
 323.15

10.0A
 10.0A
 10.0A

322.75
 323.0'

401.85
 911.17
 911.17'

5.001

3.302A
 369.37

5.512
 (601677M)

261.61

2.0

132' 132'