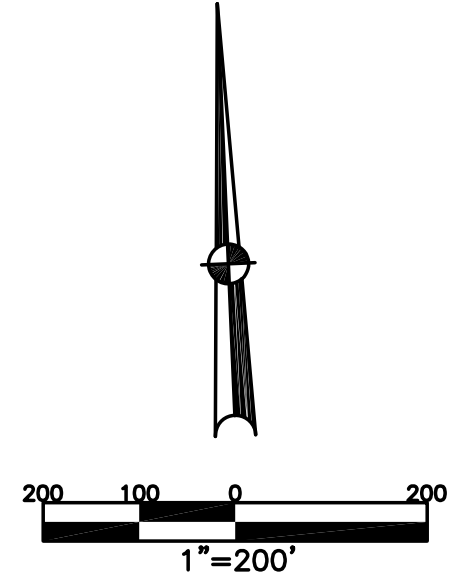


UNION TWP.
MIAMI COUNTY, OHIO

SECTION 12 TOWN 7 RANGE 4
NORTHWEST QUARTER

PARCEL NUMBER
L32-_____

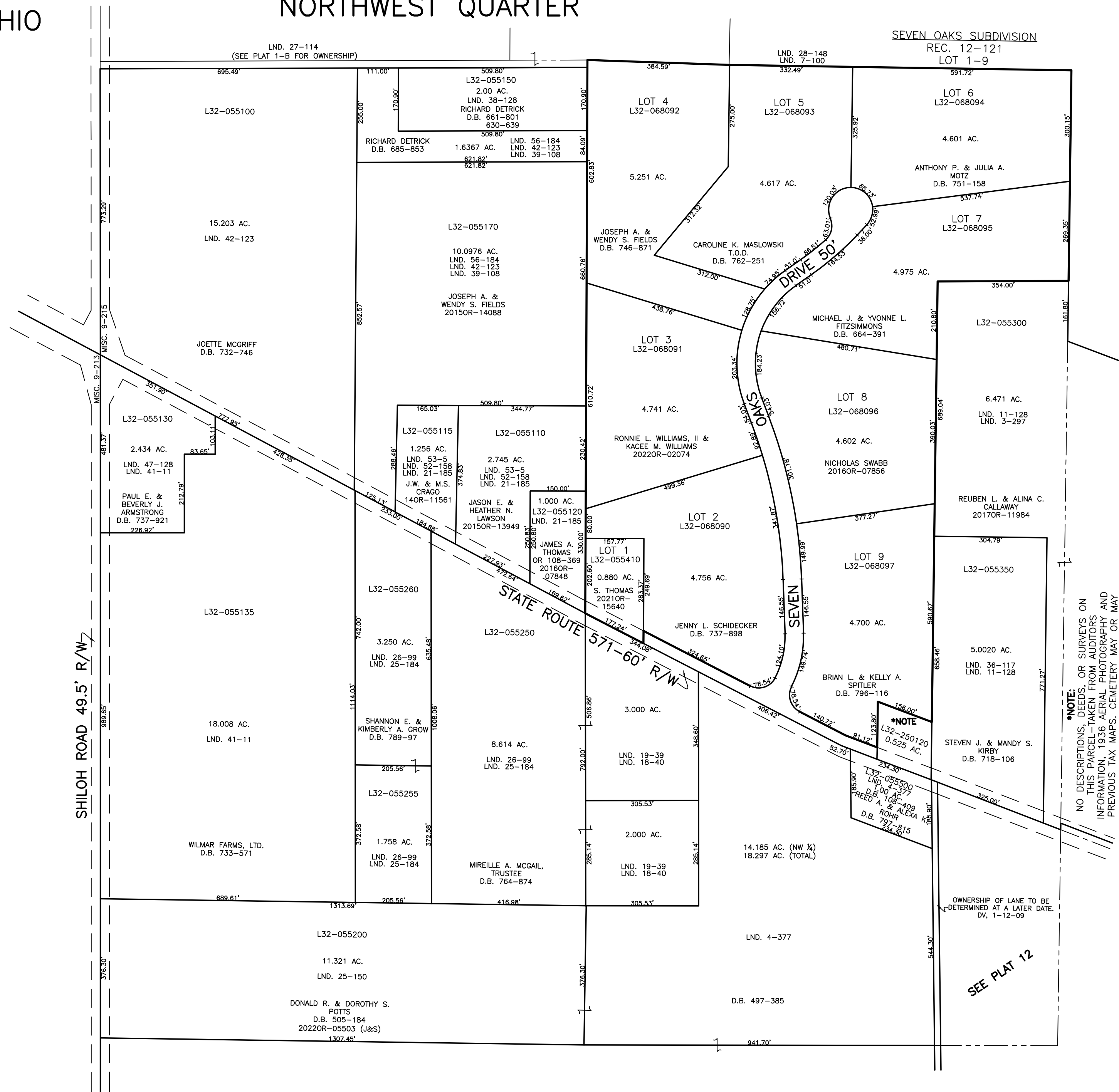
PLAT 12-C



ABBREVIATION LEGEND		
2014OR-07759	=	RECORDER'S DOCUMENT NUMBER
OR 257-619	=	OFFICIAL RECORD 257 PAGE 619
D.B. 613-172	=	DEED BOOK 613, PAGE 172
REC. 15-72	=	RECORDER'S PLAT BOOK 15, PAGE 72
LND. 33-15	=	LAND SURVEY VOLUME 33, PAGE 15
LOT 19-12	=	LOT SURVEY VOLUME 19, PAGE 12
R.R. 8-29	=	ROAD RECORD VOLUME 8, PAGE 29
R/W	=	RIGHT OF WAY
C	=	CENTERLINE
AC.	=	ACRES
TWP.	=	TOWNSHIP
TR.	=	TRACT
②	=	LOT CREATED BY RECORDER'S PLAT

LINE LEGEND	
	Blow-up Boundary
	Property Line
	Lot Split Line
	Section Line
	Centerline
	Right-of-Way Line
	Corporation Line

SURVEY INDEX		
LND. 4-377	LND. 42-123	REC. 12-121
LND. 7-109	LND. 47-128	RD. REC. 4-163
LND. 11-128	LND. 52-158	MISC. 9-213
LND. 18-40	LND. 53-5	MISC. 9-213
LND. 19-39	LND. 58-184	
LND. 21-185		
LND. 25-190		
LND. 25-184		
LND. 26-99		
LND. 27-114		
LND. 28-148		
LND. 38-117		
LND. 38-128		
LND. 39-108		
LND. 41-11		



*NOTE:
NO DESCRIPTIONS, DEEDS, OR SURVEYS ON
THIS PARCEL-TAKEN FROM AUDITORS
INFORMATION 1936 AERIAL PHOTOGRAPHY AND
PREVIOUS TAX MAPS. CEMETERY MAY OR MAY
NOT EXIST

OWNERSHIP OF LANE TO BE
DETERMINED AT A LATER DATE.
DV. 1-12-09

SEE PLAT 12

PREPARED BY: MIAMI COUNTY ENGINEER'S MAP DEPARTMENT
PAUL P. HUELSKAMP, P.E., P.S., COUNTY ENGINEER
DATE: JUNE 8, 2015 MB
REVISED: OCTOBER 3, 2017 DS