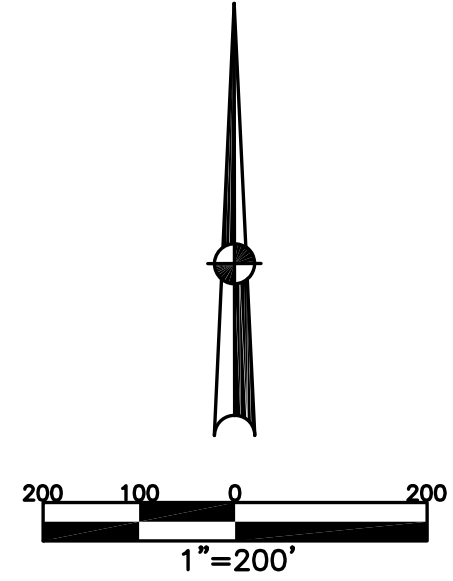


UNION TWP.
MIAMI COUNTY, OHIO

SECTION 12 TOWN 7 RANGE 4
NORTHEAST QUARTER

PARCEL NUMBER
L32-----

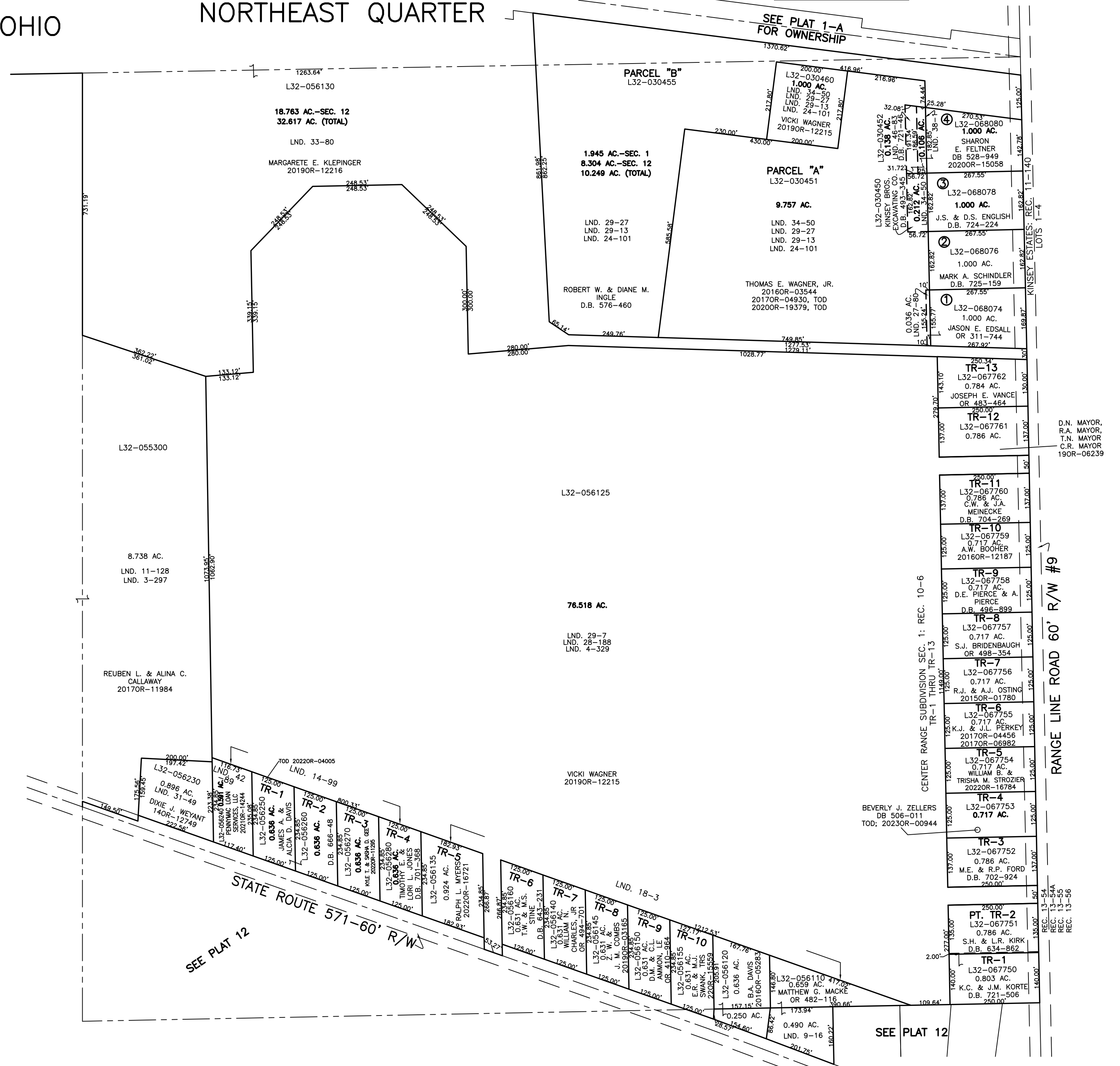
PLAT 12-A



ABBREVIATION LEGEND		
2014OR-07759	=	RECORDER'S DOCUMENT NUMBER
OR 257-619	=	OFFICIAL RECORD 257 PAGE 619
D.B. 613-172	=	DEED BOOK 613, PAGE 172
REC. 15-72	=	RECORDER'S PLAT BOOK 15, PAGE 72
LND. 33-15	=	LAND SURVEY VOLUME 33, PAGE 15
LOT 19-12	=	LOT SURVEY VOLUME 19, PAGE 12
R.R. 8-29	=	ROAD RECORD VOLUME 8, PAGE 29
R/W	=	RIGHT OF WAY
C	=	CENTERLINE
AC.	=	ACRES
TWP.	=	TOWNSHIP
TR.	=	TRACT
Ⓢ	=	LOT CREATED BY RECORDER'S PLAT

LINE LEGEND	
	Blow-up Boundary
	Property Line
	Lot Split Line
	Section Line
	Centerline
	Right-of-Way Line
	Corporation Line

SURVEY INDEX		
LND. 3-297	LND. 33-80	REC. 10-6
LND. 4-329	LND. 34-50	REC. 11-140
LND. 9-16	LND. 38-1	REC. 13-54
LND. 11-128	LND. 42-89	REC. 13-54A
LND. 14-99	LND. 46-83	REC. 13-55
LND. 18-3		REC. 13-56
LND. 24-101		
LND. 27-80		
LND. 28-188		
LND. 29-7		
LND. 29-13		
LND. 29-27		
LND. 31-49		



PREPARED BY: MIAMI COUNTY ENGINEER'S MAP DEPARTMENT
PAUL P. HUELSKAMP, P.E., P.S., COUNTY ENGINEER
DATE: MAY 27, 2015 MB
REVISED: JUNE 13, 2019 DV

D.N. MAYOR,
R.A. MAYOR,
T.N. MAYOR
C.R. MAYOR
190R-06239

RANGE LINE ROAD 60' R/W #9

REC. 13-54
REC. 13-54A
REC. 13-55
REC. 13-56