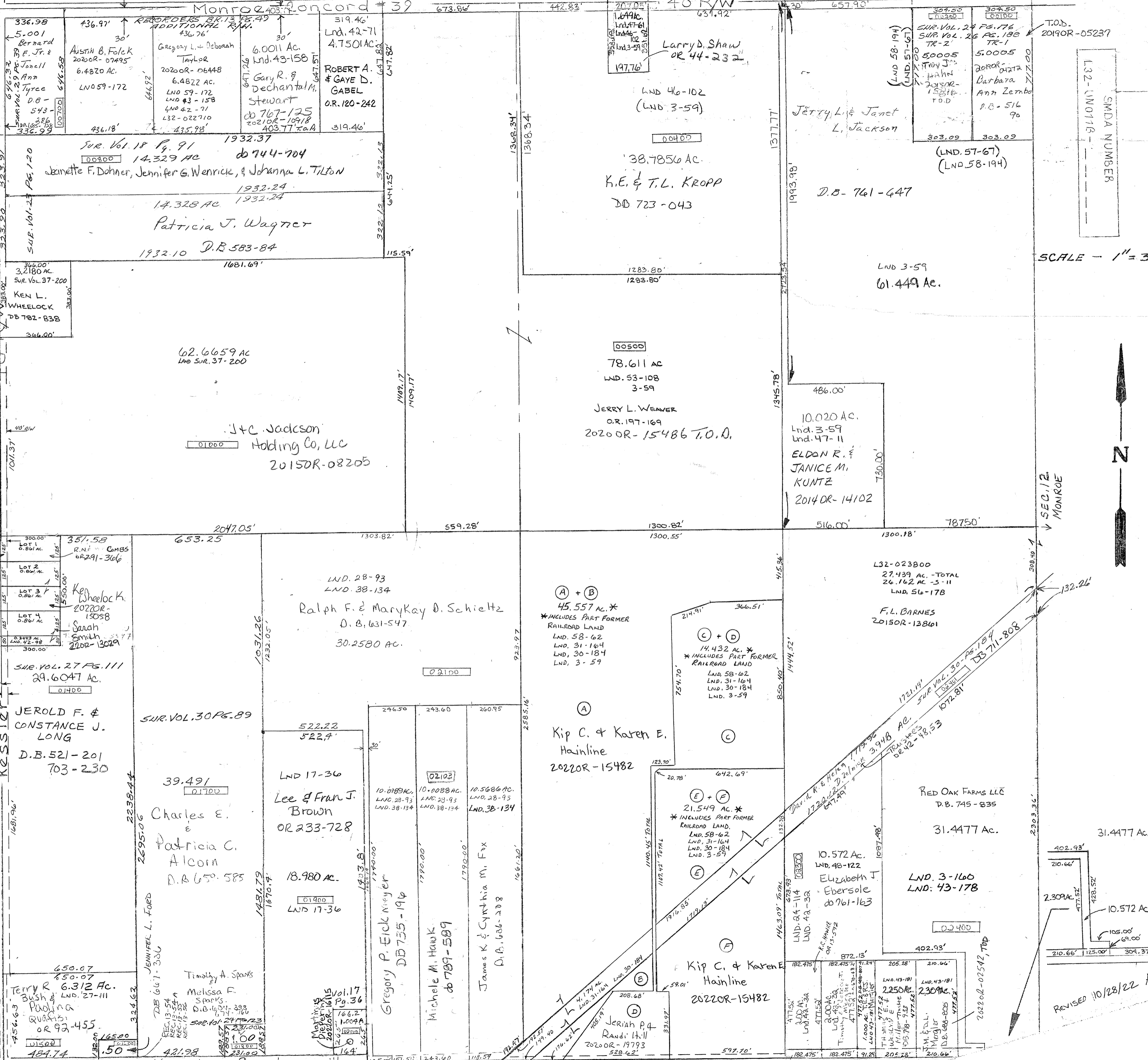


Monroe 24037 Concord # 39

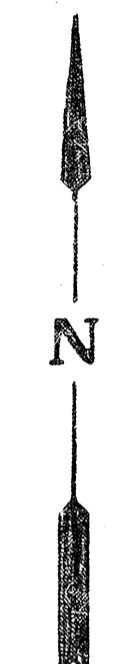
Lnd. 42-98 NW Cor SW Qtr.
Lnd. 43-158 N. Pt. NW Qtr.
Lnd. 46-102 NW Pt. NE Qtr.
Lnd. 47-11 E. Pt. NE Qtr.
Lnd. 47-61 NW Pt. NE Qtr.
Lnd. 3-59 W. Whole
3-160 E. 1/2 SE 1/4
Vol. 17 Pg. 36-S.E. Pt. S.W.
Vol. 18 Pg. 91- Con Pt. NW Qtr.
Lnd. 38-134
Lnd. 4A-3A SE Cor. Base Qtr.
Lnd. 42-71 N. Pt. NW Qtr.

NOTE: Do Not Need
to Describe 0.0866 ac.
it is already included
DV 7-26-2001



SMDA NUMBER
L32-UN0116

SCALE - 1" = 330'



REVISED 10/28/22 ADP

SECTION LINE
2303.36'

SEC. 12
MONROE

38' R/W

SEC. 11

Kessler-Cowlesville

ADDITIONAL R/W
RECORDERS BK. 13 PG. 49

R.F. LONG PLAT
REC. 6-62

AS E. 1/2

ADDITIONAL R/W
RECORDERS BK. 13 PG. 49