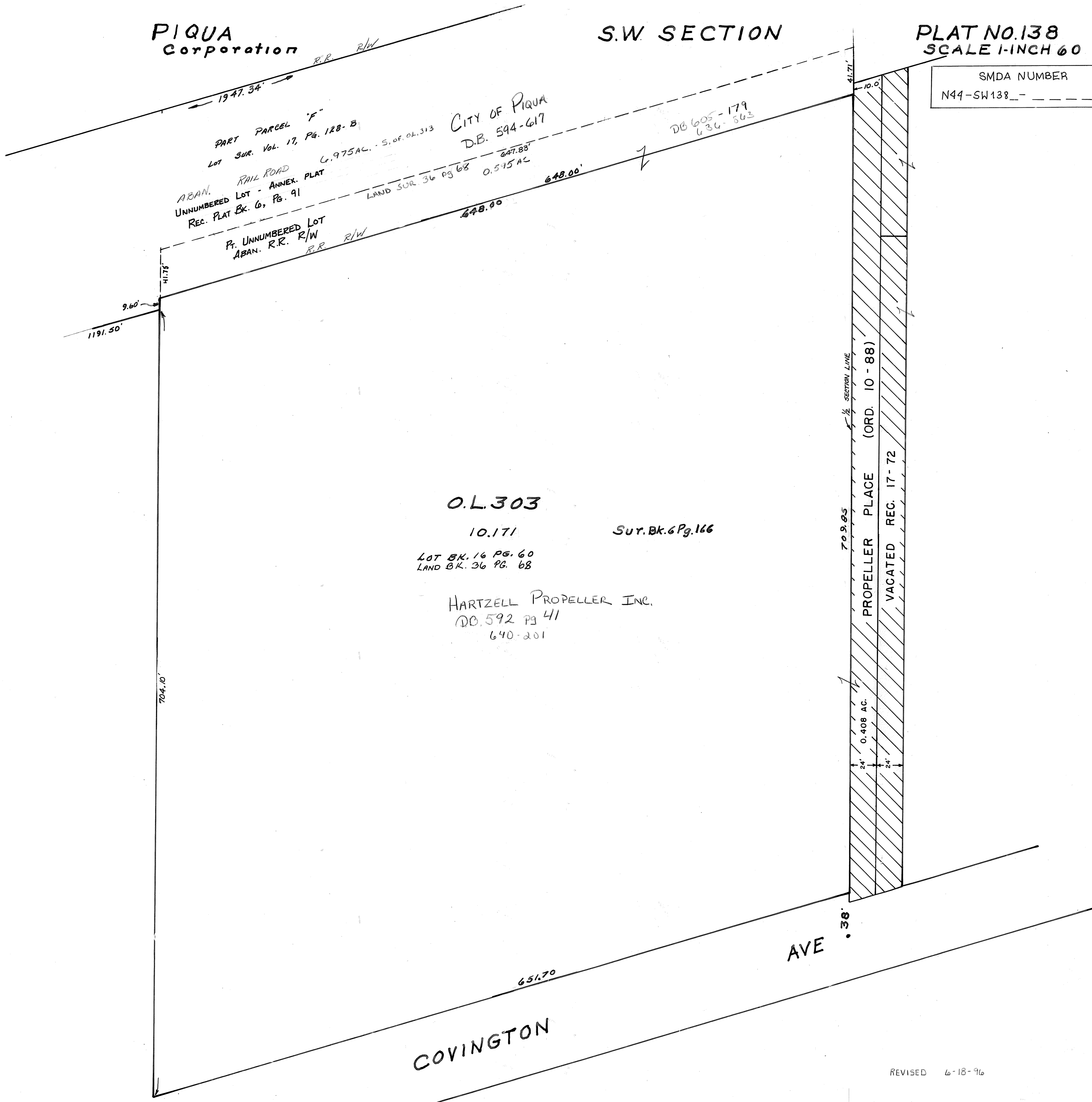


PIQUA Corporation

S.W. SECTION

PLAT NO. 138  
SCALE 1-INCH = 60 FEET.

SMDA NUMBER  
N44-SW138--



PART PARCEL "F"  
 Lot 301, Vol. 17, Pg. 128-B  
 C. 9.75 AC. - S. OF O.L. 313  
 CITY OF PIQUA  
 D.B. 594-617

ABAN. RAIL ROAD  
 UNNUMBERED LOT - ANNEX. PLAT  
 REC. PLAT Bk. 6, Pg. 91  
 LAND SUR 36 PG 68 0.545 AC

Pt. UNNUMBERED LOT  
 ABAN. R.R. R/W  
 REC. PLAT Bk. 6, Pg. 91

O.L. 303  
 10.171  
 Sur. Bk. 6 Pg. 166  
 LOT BK. 16 PG. 60  
 LAND BK. 36 PG. 68  
 HARTZELL PROPELLER INC.  
 D.B. 592 PG 41  
 640-201

1/2 SECTION LINE  
 709.83  
 PROPELLER PLACE (ORD. 10-88)  
 VACATED REC. 17-72  
 0.408 AC.  
 24' 24'

COVINGTON

AVE