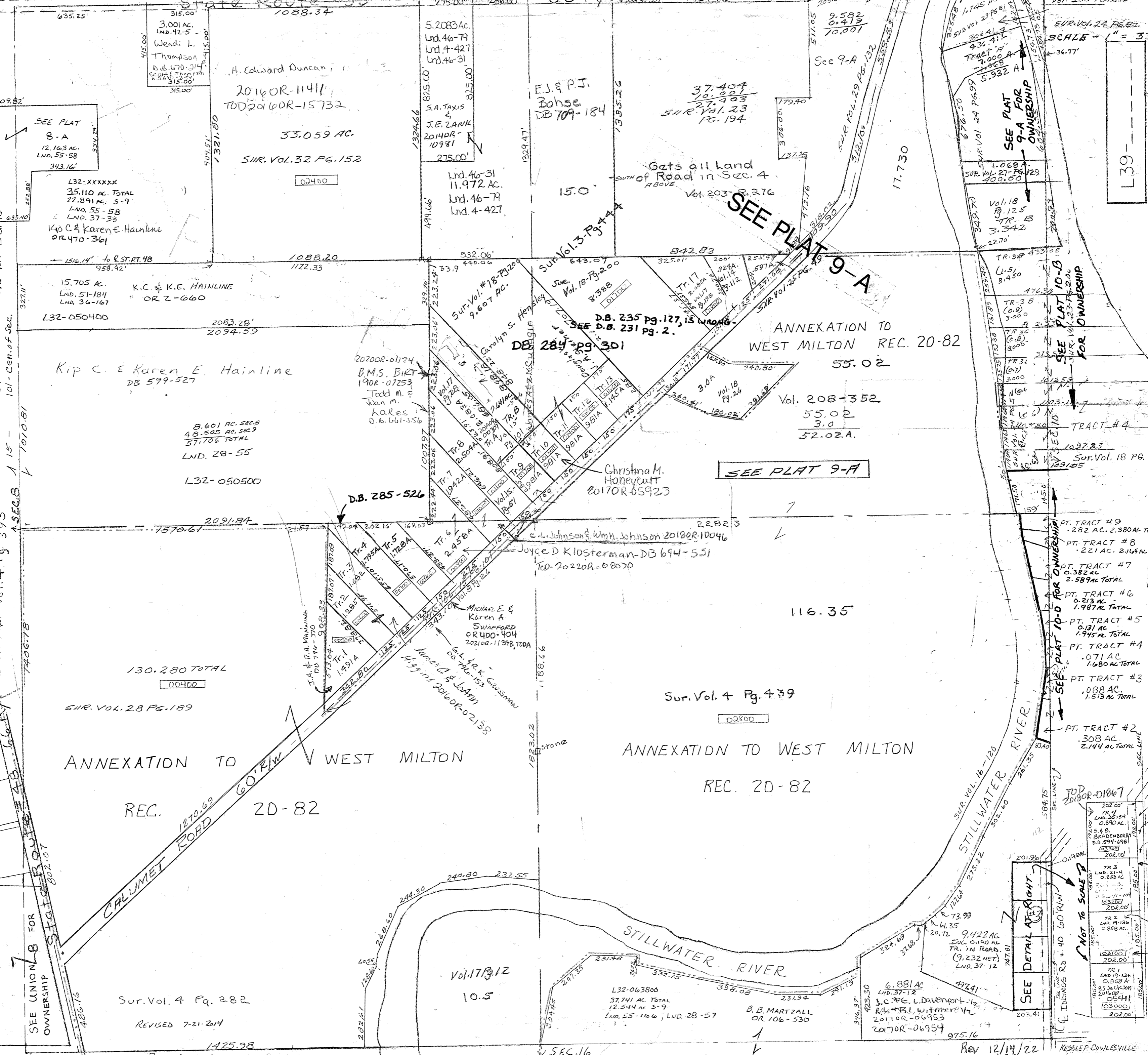


Vol. 16 Pg. 11 S.E. Cor. N.E.
Rec. Vol. 9 Pg. 10 Replat of Stillwater River Subd.
Vol. 17 Pg. 28 S.E. Cor. N.W.
Vol. 18 Pg. 198 Cen. Pt. N.E.
Vol. 18 Pg. 265 Cen. Pt. N.E.
Vol. 18 Pg. 125 NE Pt. N.E.
Vol. 46-79 NE Pt. NW QTR.
Vol. 46-79 NE Pt. NW QTR.
51-NE Cor. S.W. & S.E. Cor. N.W. Lnd. 46-31 NE Pt. NW QTR.
101-Cen. of Sec.

Surveys -
N 1/2 Sec. - Vol. 3 Pg. 444
NE 1/4 NW - Vol. 4 Pg. 247
SPT SW - Vol. 4 Pg. 282
Car Stone Ref. - Vol. 4 Pg. 395



SEE PLAT 8-A
12.163 AC.
LND. 55-58
343.16'

L32-XXXXXX
35.110 AC. TOTAL
22.891 AC. S-9
LND. 55-58
LND. 37-33
Kip C. & Karen E. Hainline
OR 470-361

L32-050400
15.705 AC.
LND. 51-184
LND. 36-167
Kip C. & Karen E. Hainline
OR 2-660

L32-050500
8.601 AC. SEC. 8
48.505 AC. SEC. 9
57.106 TOTAL
LND. 28-55

SEE UNION 8 FOR OWNERSHIP
State Route 48
802.07

3.001 AC.
LND. 42-5
Wendi L. Thomson
D.B. 670-314
315.00'

5.2083 AC.
Lnd. 46-79
Lnd. 4-427
Lnd. 46-31
S.A. TAXIS & J.E. ZANK
2014OR-10981
275.00'

2014OR-11411
TOD 2016OR-15732
33.059 AC.
SUR. VOL. 32 PG. 152
02400

2020OR-01124
B.M.S. BIRT
190R-07253
Todd M. & Joan M. Kares
D.R. 661-356

130.280 TOTAL
00400
SUR. VOL. 28 PG. 189
ANNEXATION TO WEST MILTON
REC. 20-82
CALUMET ROAD
60' R/W
279.69
20-82
Sur. Vol. 4 Pg. 282
REVISED 7-21-2014
1425.98

5.2083 AC.
Lnd. 46-79
Lnd. 4-427
Lnd. 46-31
S.A. TAXIS & J.E. ZANK
2014OR-10981
275.00'

11.972 AC.
Lnd. 46-79
Lnd. 4-427

Sur. Vol. #18 Pg. 200
9.607 AC.
D.B. 284 pg. 301

Michael E. & Karen A. SWAFFORD
OR 400-404
2021OR-11398 TODA

Vol. 17 Pg. 12
10.5
L32-063800
37.741 AC. TOTAL
12.544 AC. S-9
LND. 55-106 & LND. 28-57
B.B. MARTZALL
OR 106-530

F.J. & P.J. Bohse
DB 709-184
37.404
10.001
27.403
SUR. Vol. 23 PG. 194

ANNEXATION TO WEST MILTON
REC. 20-82
55.02
Vol. 208-352
55.02
3.0
52.02A.

Christina M. Honeycutt
2017OR-05923

Sur. Vol. 4 Pg. 439
02800

ANNEXATION TO WEST MILTON
REC. 20-82
STILLWATER RIVER
10.5
L32-063800
37.741 AC. TOTAL
12.544 AC. S-9
LND. 55-106 & LND. 28-57
B.B. MARTZALL
OR 106-530

9.582
0.419
10.001
See 9-A

SEE PLAT 9-A

SEE PLAT 9-A

SEE PLAT 9-A

SEE PLAT 9-A

1.745 AC.
SUR. Vol. 23 PG. 81
Tract A
4.32 AC.
7.000
5.932 A

SEE PLAT 9-A FOR OWNERSHIP

SEE PLAT 10-B FOR OWNERSHIP

SEE PLAT 10-D FOR OWNERSHIP

SEE PLAT 10-D FOR OWNERSHIP

SCALE - 1" = 330'

SEE UNION 8 FOR OWNERSHIP

SEE UNION 8 FOR OWNERSHIP

SEE UNION 8 FOR OWNERSHIP

SEE UNION 8 FOR OWNERSHIP