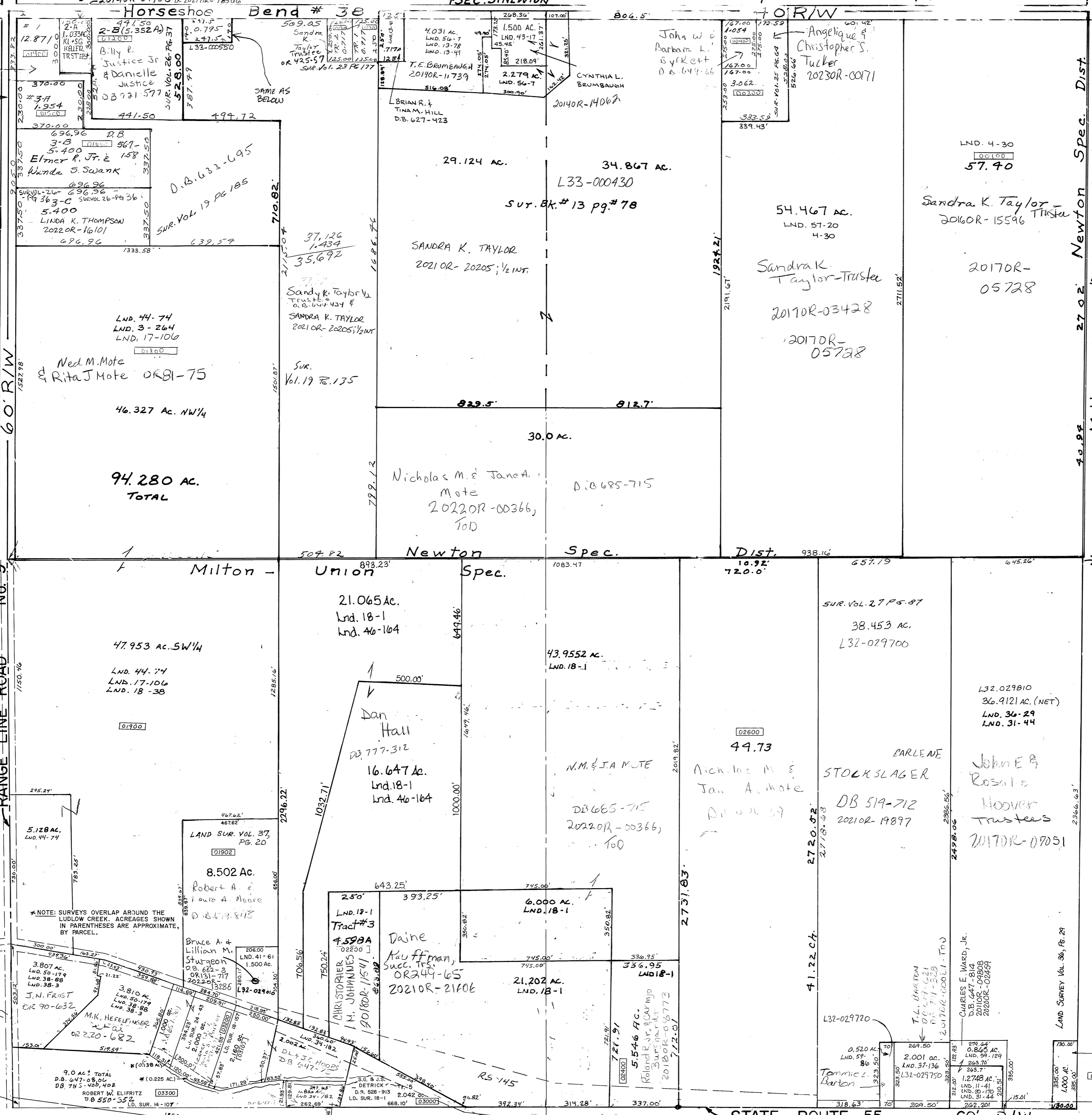


Horseshoe Bend # 3e

OR 86-901 Sandra Summers
Mark A. Higgins
OR 203-687



- NW Quarter: LND. 3-264, 13-41, 13-78, 19-135, 19-185, 23-177, 26-36, 26-37, 44-74
- SW Quarter: LND. 14-107, 17-106, 18-1, 18-157, 24-43, 34-182, 37-20, 38-3, 44-74
- NE Quarter: LND. 4-30, 13-78, 25-64, 38-88, 41-61
- SE Quarter: LND. 11-41, 18-1, 20-170, 27-87, 31-44, 36-29, 37-136, 46-164

PARCEL NUMBER
L33 -

PARCEL NUMBER
L32 -

Newton Spec. Dist.
Milton - Union Spec. Dist.

Newton Spec. Dist.
Milton - Union Spec. Dist.

SCALE - 1" = 330'

REVISED 01/06/23
JA