

UNION TWP

MIAMI COUNTY, OHIO

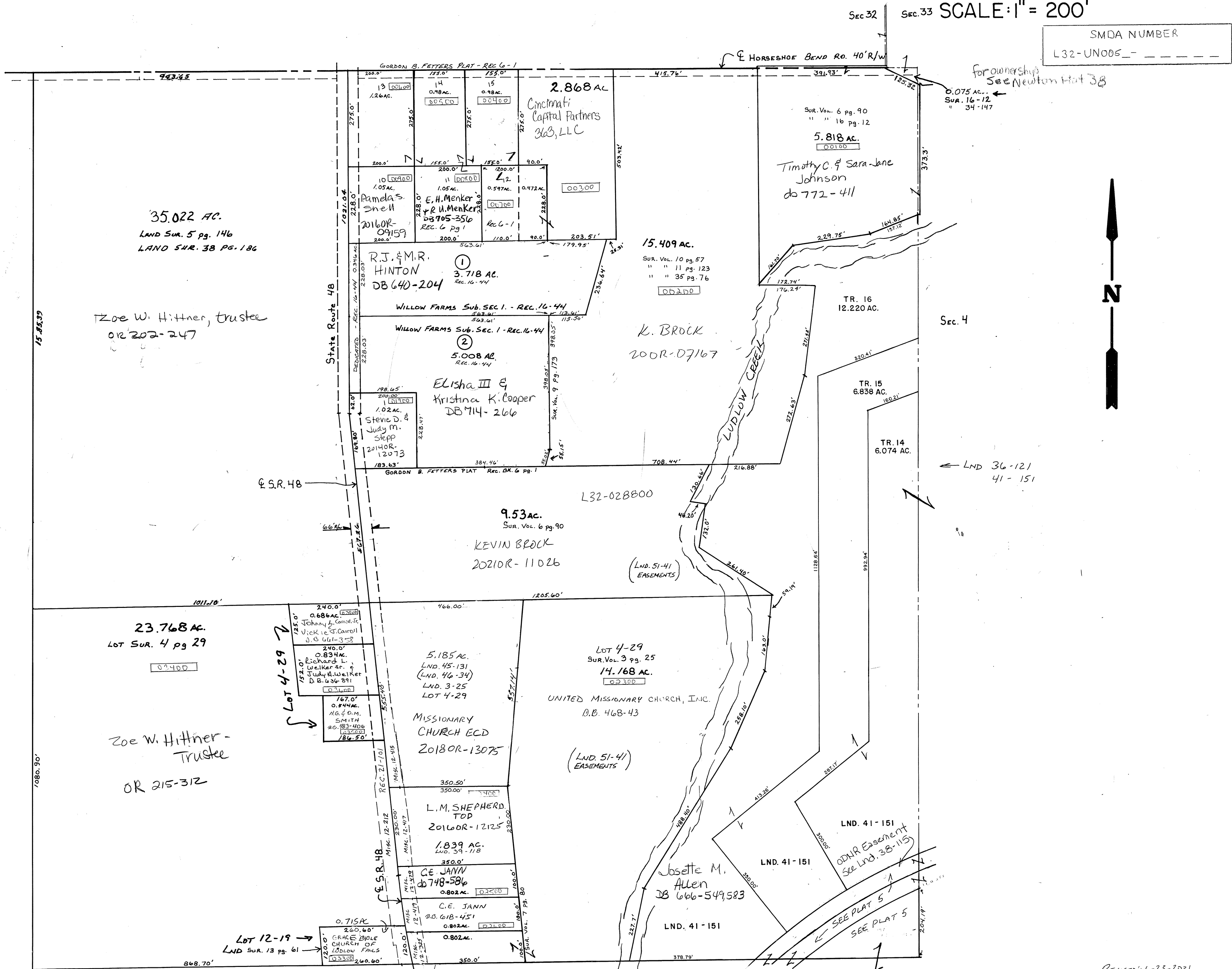
PLAT 5-A

SEC. 5 TOWN 6 RANGE 5

N.E. QUARTER

SCALE: 1" = 200'

SMDA NUMBER
L32-UN005_



35.022 AC.
LAND SUR. 5 pg. 146
LAND SUR. 38 pg. 186

Zoe W. Hittner, trustee
OR 202-247

23.768 AC.
LOT SUR. 4 pg 29

Zoe W. Hittner -
Trustee
OR 215-312

9.53 AC.
SUR. VOL. 6 pg. 90
KEVIN BROCK
2021OR-11026

15.409 AC.
SUR. VOL. 10 pg. 57
" " 11 pg. 123
" " 35 pg. 76
K. BROCK
200R-07167

5.818 AC.
Timothy C. & Sara-Jane
Johnson
do 772-411

R.J. & M.R.
HINTON
DB 640-204
3.718 AC.
REC. 16-44

WILLOW FARMS Sub. Sec. 1 - REC. 16-44
5.008 AC.
REC. 16-44

Elisha III &
Kristina K. Cooper
DB 714-266
1.02 AC.

5.185 AC.
LND. 45-131
(LND. 46-34)
LND. 3-25
LOT 4-29
MISSIONARY
CHURCH ECD
2018OR-13075

LOT 4-29
SUR. VOL. 3 pg. 25
14.168 AC.
UNITED MISSIONARY CHURCH, INC.
D.B. 468-43
(LND. 51-41)
EASEMENTS

L.M. SHEPHERD
TOP
2016OR-12125
1.839 AC.
LND. 39-118

CE JANN
DB 748-586
0.802 AC.

CE JANN
D.B. 618-451
0.802 AC.

LOT 12-19
LND SUR. 13 pg. 61

LND 36-121
41-151

LND. 41-151
ODNR Easement
See Lnd. 38-115

Josette M.
Allen
DB 666-549,583
LND. 41-151



REVISED: 6-23-2021
NMI