

SECV - Vol. 2 Pg. 47 Ludlow Falls NEQY - Vol. 3 Pg. 25 Ludlow Falls NPTS WQT - Vol. 3 Pg. 357 Ludlow Falls NPTS WQT - Vol. 3 Pg. 357 Ludlow Falls RR - Ludlow Falls - Vol. 4 Pg. 284 Ludlow Falls

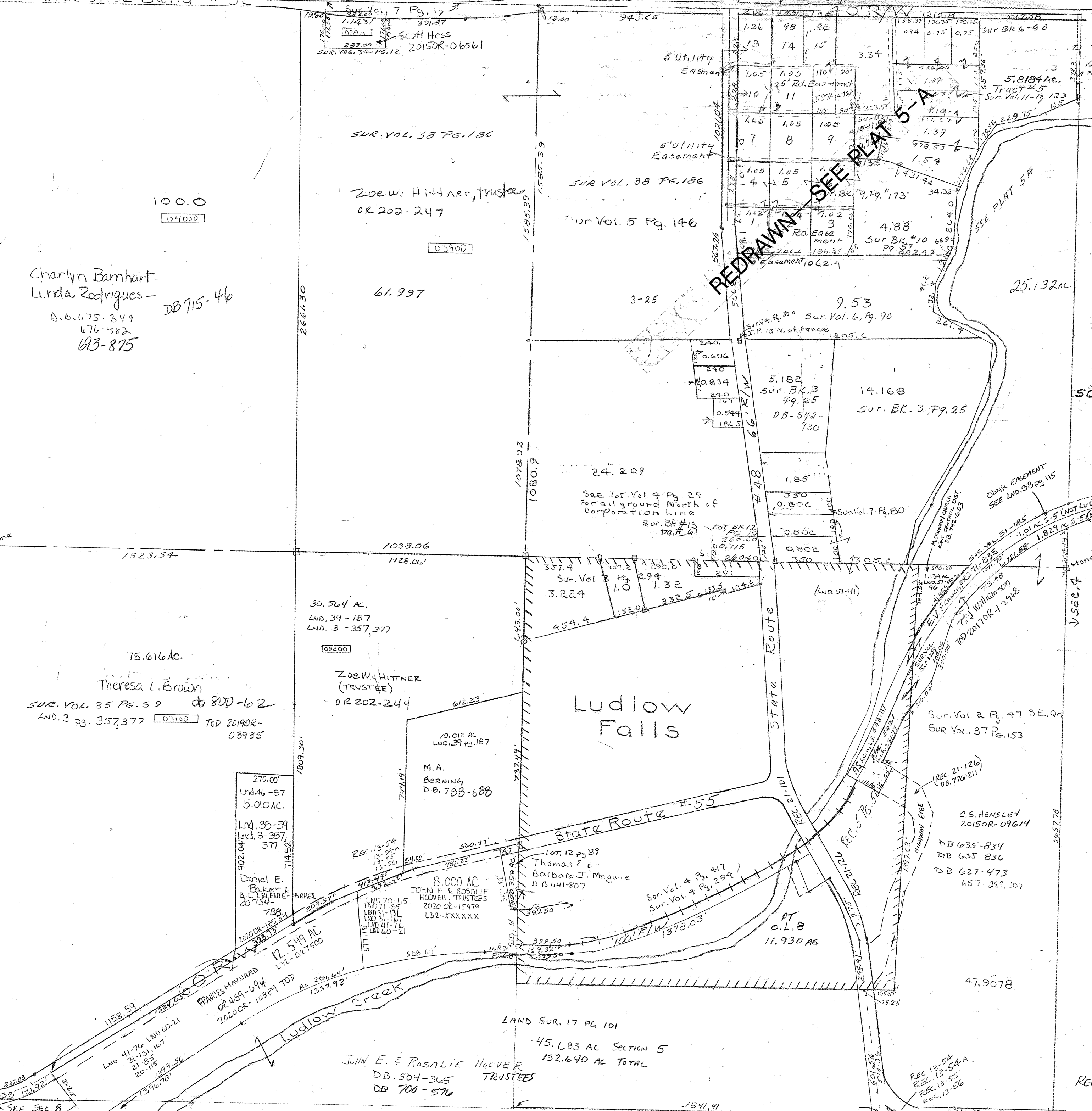
SURVYS - Vol. 4 Pg. 300 Ref to Cor Stone Vol. 4 Pg. 417 Ludlow Falls Vol. 4 Pg. 146 NEPTNE Vol. 5 Pg. 80 NEPTNE Vol. 5 Pg. 19 Horse Shoe Bend Rd. Vol. 5 Pg. 80 Scen Pt NE Vol. 5 Pg. 29 Ludlow Falls

Lnd. 46-57 Con. Pt. SW Qtr. LND 31-131 LND 31-167 LND 20-115 LND 21-85 LND 41-76 LND 60-21

Vol. 9 Pg. 173 - NEPTNE Vol. 10 Pg. 57 - Con Pt NE Vol. 10 Pg. 118 - NEPTNE Vol. 11 Pg. 123 - NEPTNE Vol. 13 Pg. 61 - S Con Pt NE Vol. 16 Pg. 12 - NE Con Pt NE Vol. 17 Pg. 101 - S. Pt. S. 1/2

Vol. 19 Pg. 19 - Horse Shoe Bend Rd. Vol. 16 Pg. 16 - S Con Pt NE Vol. 17 Pg. 17 - S. Pt. S. 1/2

Vol. 19 Pg. 19 - Horse Shoe Bend Rd. Vol. 16 Pg. 16 - S Con Pt NE Vol. 17 Pg. 17 - S. Pt. S. 1/2



SMDA NUMBER L32-JUN05



SCALE - 1" = 330'

REVISED 12-31-2020 M STORMS