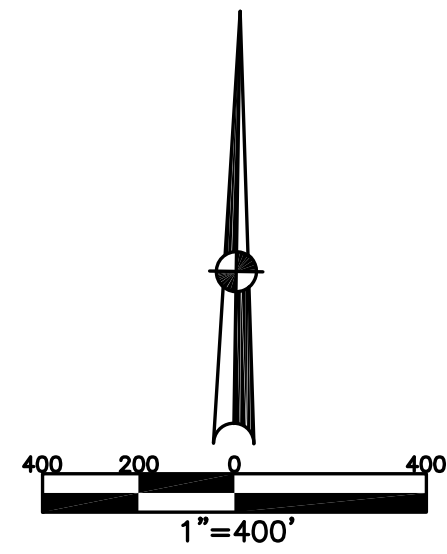


UNION TWP.
MIAMI COUNTY, OHIO

SECTION 4 TOWN 6 RANGE 5

PARCEL NUMBER
L32-027150

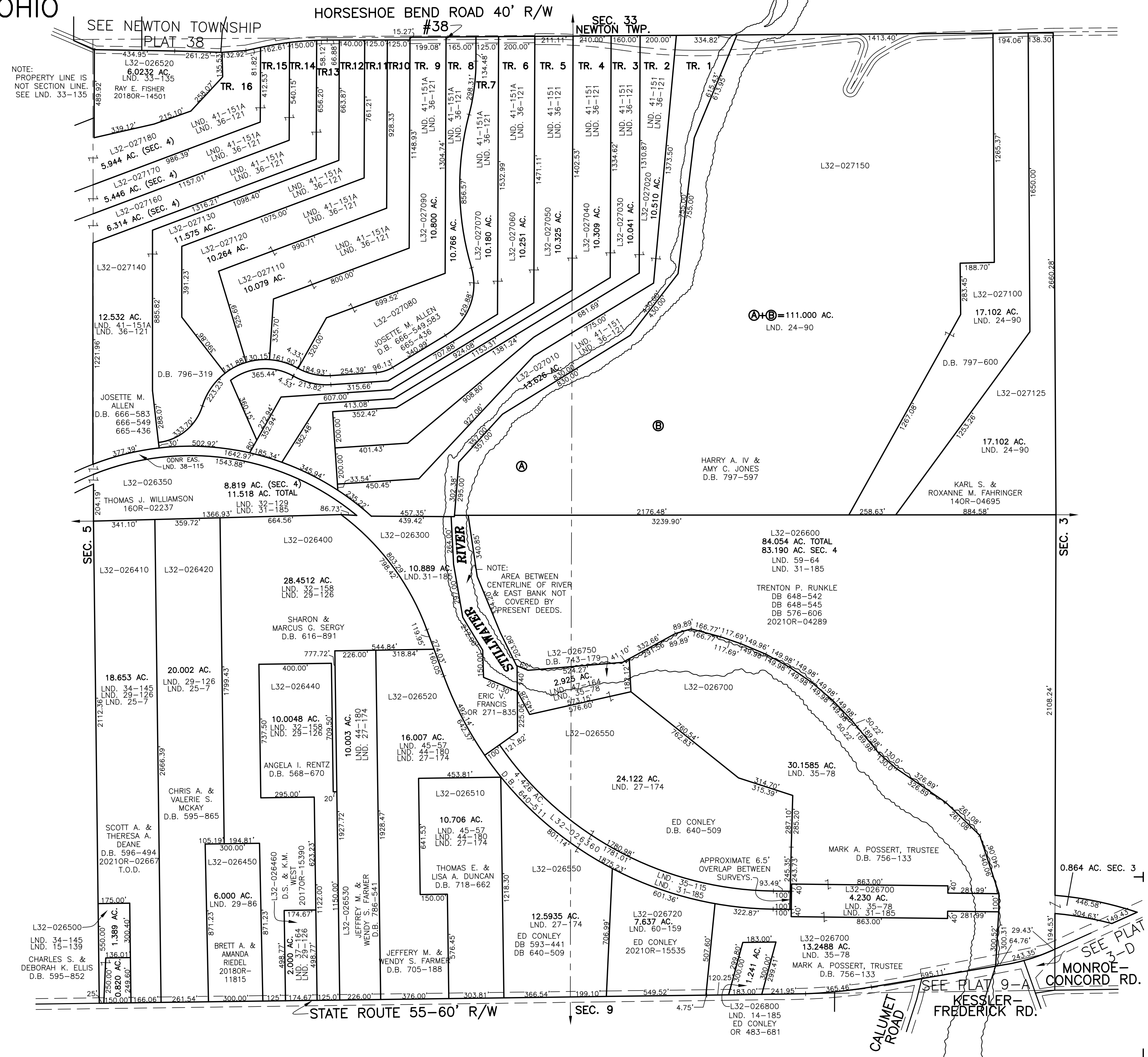
PLAT 4



ABBREVIATION LEGEND	
20140R-07759 =	RECORDER'S DOCUMENT NUMBER
OR 257-619 =	OFFICIAL RECORD 257 PAGE 619
D.B. 613-172 =	DEED BOOK 613, PAGE 172
REC. 15-72 =	RECORDER'S PLAT BOOK 15, PAGE 72
LND. 33-15 =	LAND SURVEY VOLUME 33, PAGE 15
LOT 19-12 =	LOT SURVEY VOLUME 19, PAGE 12
R.R. 8-29 =	ROAD RECORD VOLUME 8, PAGE 29
R/W =	RIGHT OF WAY
C =	CENTERLINE
AC.	ACRES
TWP.	TOWNSHIP
TR.	TRACT
⊙	LOT CREATED BY RECORDER'S PLAT

LINE LEGEND	
	Blow-up Boundary
	Property Line
	Lot Split Line
	Section Line
	Centerline
	Right-of-Way Line
	Corporation Line

SURVEY INDEX	
NORTHEAST QUARTER	
LND. 24-90	RD. REC. 8-78
LND. 36-121	REC. 11-139
LND. 41-151	
SOUTHEAST QUARTER	
LND. 14-185	REC. 13-54
LND. 23-81	REC. 13-54A
LND. 23-104	REC. 13-55
LND. 26-83	REC. 13-56
LND. 27-174	
LND. 29-132	
LND. 30-39	
LND. 31-185	
LND. 34-173	
LND. 35-78	
LND. 35-115	
LND. 47-164	
LND. 59-64	
LND. 60-159	
SOUTHWEST QUARTER	
LND. 15-139	
LND. 25-71	
LND. 27-174	
LND. 29-86	
LND. 29-126	
LND. 31-185	
LND. 32-158	
LND. 34-145	
LND. 35-115	
LND. 37-164	
LND. 44-180	
LND. 45-57	
LND. 47-164	
LND. 59-64	
NORTHWEST QUARTER	
LND. 16-12	RD. REC. 8-78
LND. 24-90	REC. 11-139
LND. 31-185	
LND. 32-129	
LND. 33-147	
LND. 36-121	
LND. 38-115	
LND. 41-151	
LND. 41-183	



PREPARED BY: MIAMI COUNTY ENGINEER'S MAP DEPARTMENT
PAUL P. HUELSKAMP, P.E., P.S., COUNTY ENGINEER
DATE: DECEMBER 15, 2016 MDB
REVISED: September 7, 2021MSTORMS

SEE PLAT 3-D
MONROE-CONCORD RD.
SEE PLAT 9-A
KESSLER-FREDERICK RD.