

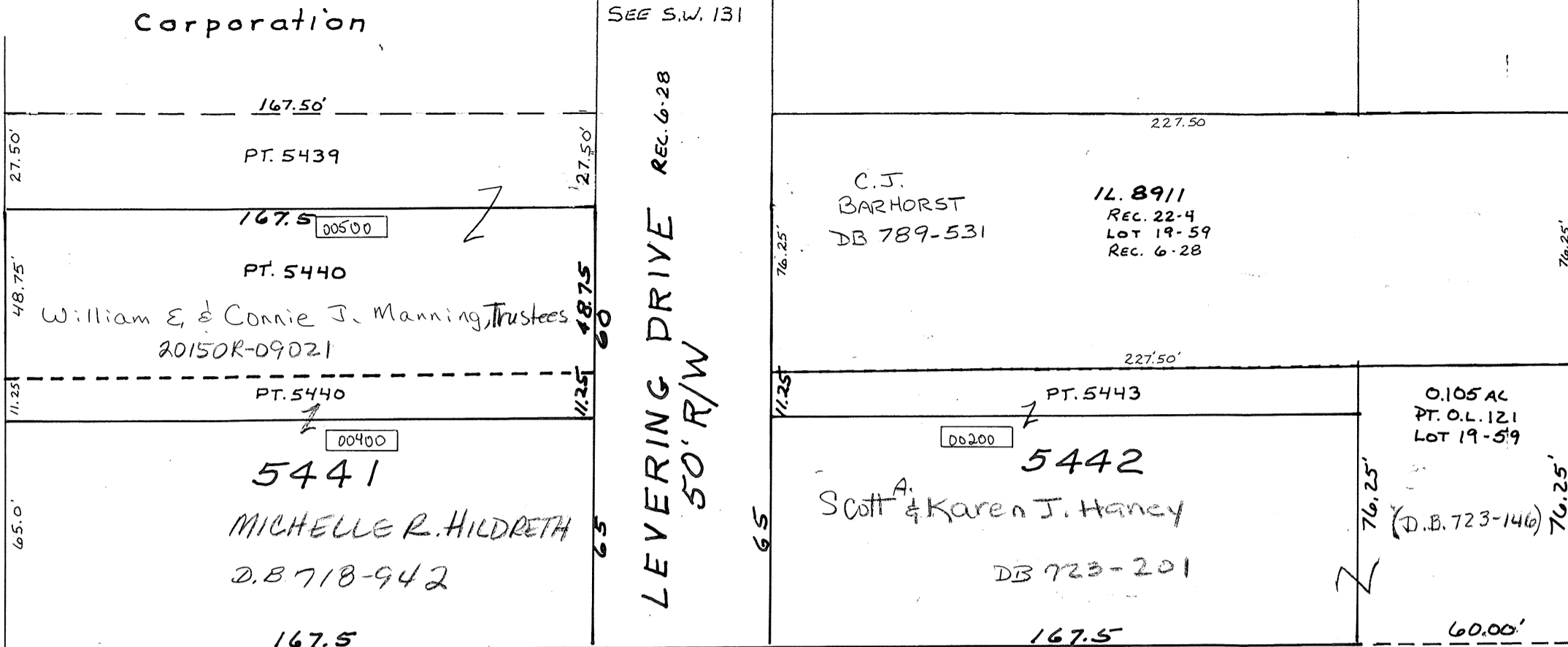
PIQUA Corporation

S.W. SECTION

PLAT NO. 126  
Scale 1" = 40 Feet

HAROLD E. ALEXANDER'S  
SECOND SUBDIVISION  
IN LOTS 5433-5450  
REC. 6-28  
(Lot 5-137)

SMDA NUMBER  
N44-SW126-\_-\_-\_-\_-



462.0

00300

PT. O.L. 121

2.950 AC REMAIN

Robert E. & ~~Virginia E.~~ Potter, T.O.D.

D.B. 478 - 832  
20190R - 10877  
20190R - 12258

367.0

Vol. 9 - Pg. 169

1497.05'

PT. O.L. 121

PART PARCE "F"  
LOT SUR. VOL 17, PG. 128-A  
ABAN RAILROAD

PT. O.L. 119

1609.19'

CITY OF PIQUA  
D.B. 594-617

835.51'  
UN NUMBERED

PT. O.L. 223



REVISED 10-22-2019

AS