

Vol 14 Pg 151 - Cen W P & S E  
 Vol 14 Pg 179 - Cen W P & S E  
 Vol 20 Pg 52 - SW 1/4  
 Vol 37 Pg 1 - SW 1/4  
 Lnd. 43-3 NW 1/4  
 Lnd. 43-159 NW 1/4  
 Vol. 6 Pg. 121 - SE P & S W  
 Vol. 8 Pg. 2 - SE P & S W  
 Vol. 9 Pg. 25 - NE P & S E  
 Vol. 10 Pg. 193 - SE P & S W  
 Vol. 12 Pg. 13 - S P & S W  
 Vol. 14 Pg. 141 - W Cen P & S E  
 Vol. 2 Pg. 172 - NE P & S E  
 Vol. 3 Pg. 48 - NE P & S E  
 Vol. 4 Pg. 90 - SE P & S W  
 Vol. 6 Pg. 93 - SE P & S W  
 1 SEC. 4

Board of Commissioners  
 of Miami County  
 Fair Dist

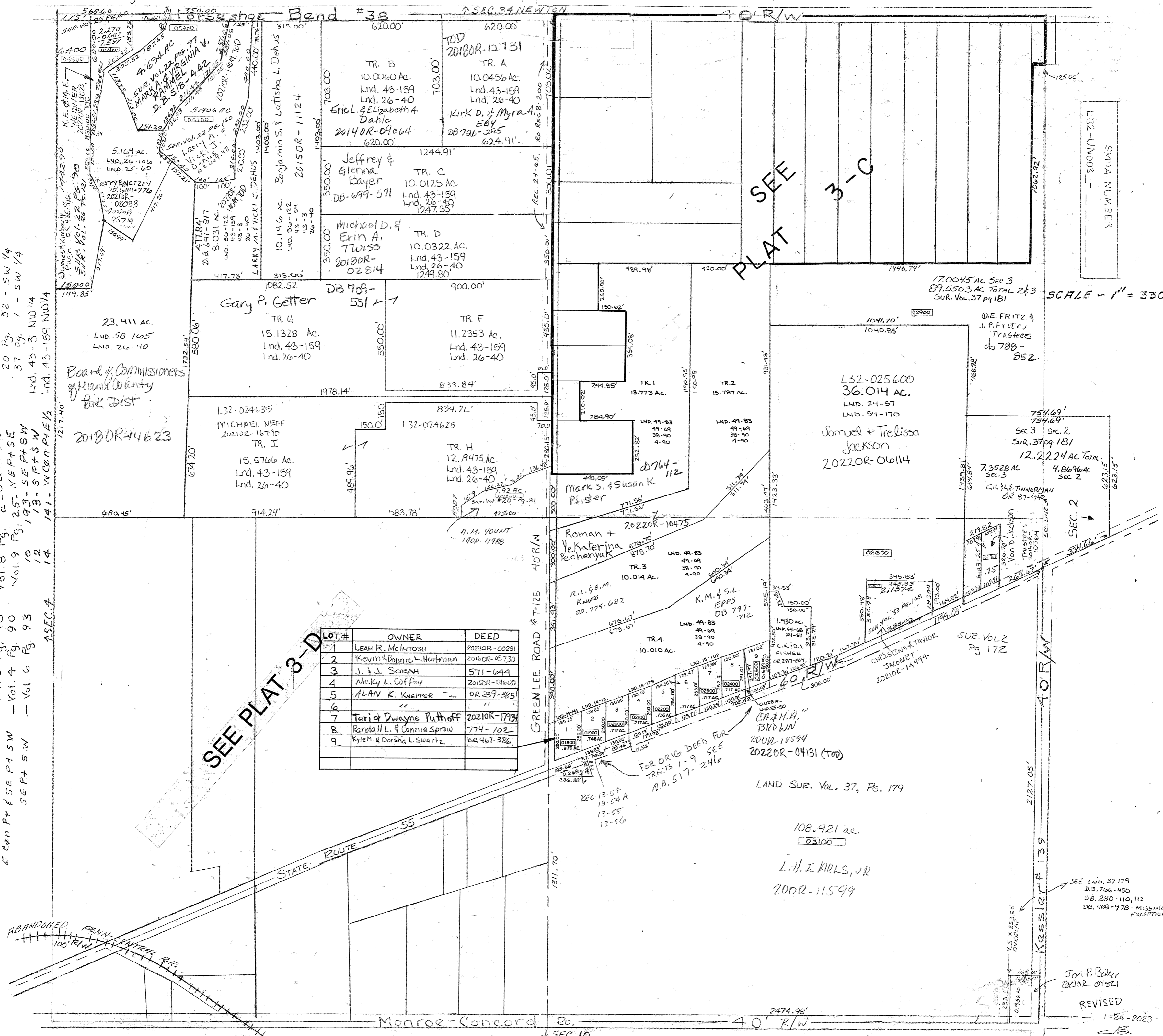
LOT#	OWNER	DEED
1	LEAH R. McINTOSH	2023OR-00231
2	Kevin & Bonnie L. Hartman	2016OR-05730
3	J. & J. SORAH	571-644
4	Nicky L. Coffey	2015OR-04600
5	ALAN K. KNEPPER	OR 239-385
6	"	"
7	Teri & Dwayne Puthoff	2021OR-17934
8	Randall L. & Connie Sprow	774-102
9	Kyle M. & Dorsha L. Swartz	02467-386

SEE PLAT 3-D

PLAT SEE 3-C

SMDA NUMBER  
 L32-UND03

SCALE - 1" = 330'



ABANDONED PENN-CENTRAL RR  
 100' R/W

SEE LND. 37-179  
 D.B. 766-480  
 D.B. 280-110, 112  
 D.B. 488-978 - MISSING  
 EXCEPTION

Jon P. Baker  
 021OR-01821  
 REVISED  
 1-24-2023

LAND SUR. VOL. 37, PG. 179

L.H. I. KIRKS, JR  
 200R-11599

FOR ORIG DEED FOR  
 TRACTS 1-9 SEE  
 D.B. 517-246

SEC. 10