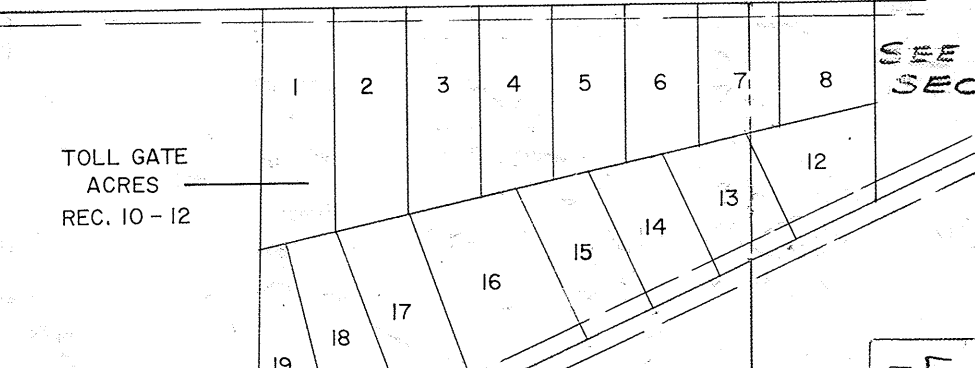
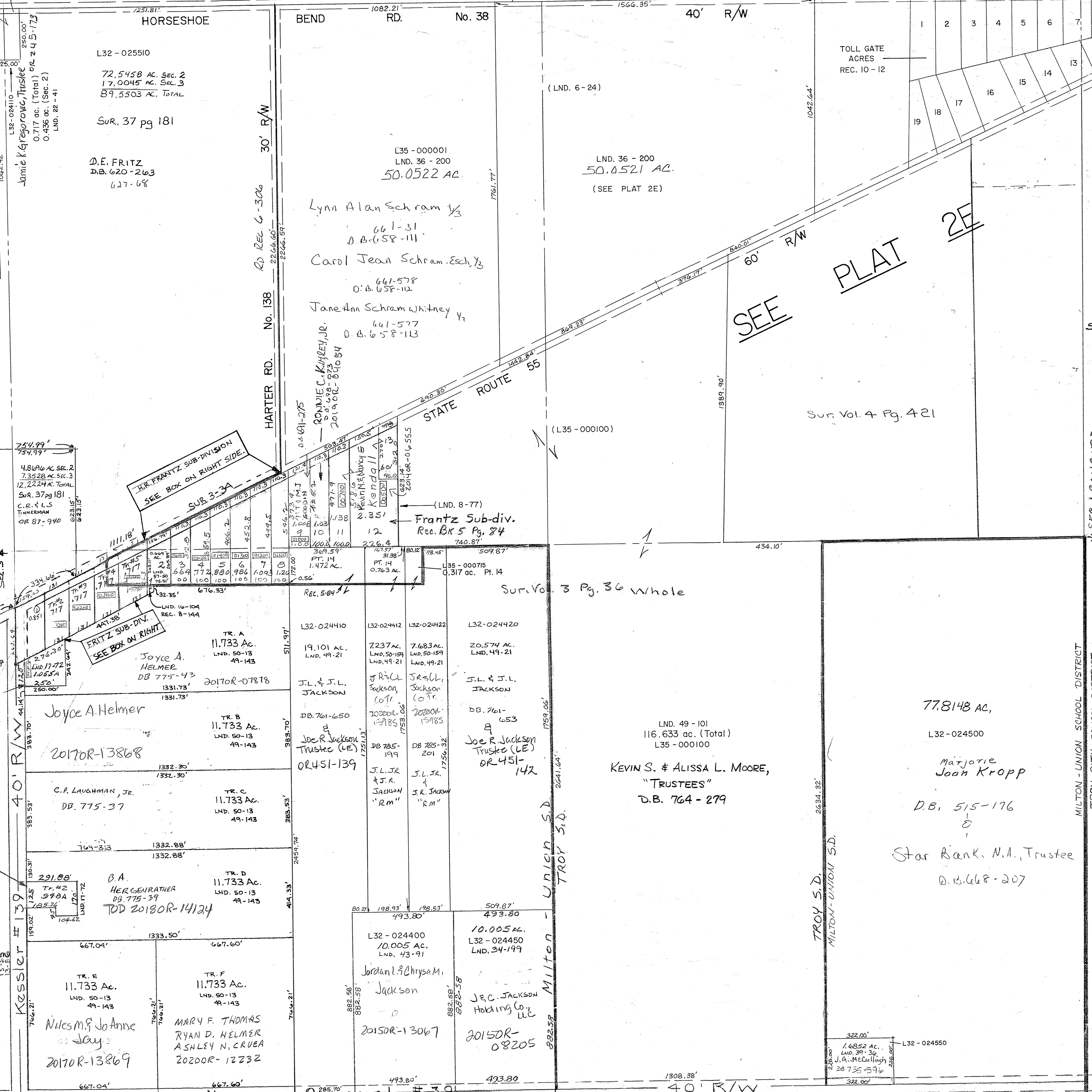


Vol. 16 Pg. 104 N.W. PT. S.W.  
REC. 1118  
Vol. 17 Pg. 72 W. Side S.W.

Vol. 4-421-5 PT NE  
Vol. 6-24-CEN NW  
Vol. 8-77-CEN W/2  
Vol. 9-107  
Vol. 10-142 NE CORNER

BEATRICE ANNE  
HERGENRATH  
D.B. 522-865  
LND. 17-72  
TOD 201808-14125

WHOLE SEC. - Vol. 3-36  
S. CEN PT NW - Vol. 3-34  
NW PT SE - Vol. 3-226  
W PT NW - Vol. 3-277



L32 - UNDO2  
L32 SMDA NUMBER

SCALE - 1" = 330'

H.R. FRANTZ SUB-DIVISION REC. 5-84

1	SEE LOT'S 4 & 5 FRITZ REC. 8-144	8	THOMAS E. & JOAN GIBSON, TRUSTEE
2	THOMAS M. HENDERSON	9	SEE MAP
3	ROBERT E. ROHR, D.B. 322-521, OR 141-701	10	SEE MAP
4	D.S. & A.R. POLLARD, D.B. 701-818	11	SEE MAP
5	JULIEA ANDERSON, D.B. 777-650	12	SEE MAP
6	I.S. & C.E. KESSLER, D.B. 718-150	13	SEE MAP
7	J.A. HELMER, 2017-02-10-500	14	SEE MAP

FRITZ SUB-DIV. REC. 8-144

1	J.A. HELMER, 2017-02-10-500
2	DEAN C. & CAROLYN S. JACKSON, D.B. 656-107
3	MICHAEL A. LORENZO, 2019-02-00-095
4	ROBERT J. JUDITH L. FINROCK, D.B. 447-24
5	Ryan J. Moore & Ashlee M. Myan, 2015-02-10-040

REVISED: 3/23/16 AM

MILTON - UNION SCHOOL DISTRICT  
TROY CITY SCHOOL DISTRICT

778148 AC,  
L32-024500  
Marjorie Joan Kropp  
D.B. 515-176

Star Bank, N.A., Trustee  
D.B. 668-207

TROY S.D.  
MILTON-UNION S.D.

MILTON  
UNION S.D.  
TROY S.D.

KESSLER # 139

Monroe - Concord # 39