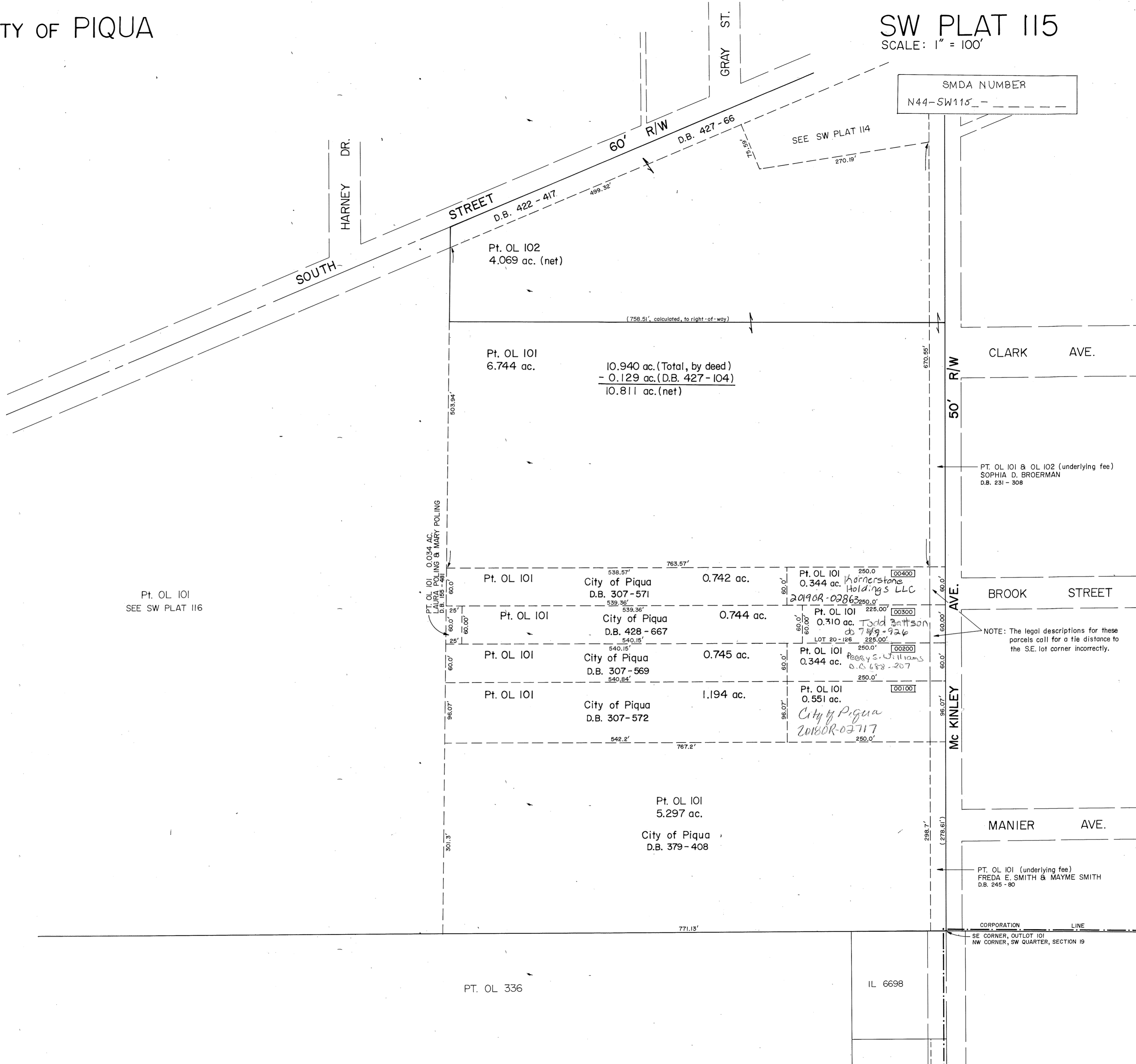


SMDA NUMBER
N44-SW115



STREET

SOUTH

HARNEY DR.

GRAY ST.

60' R/W

D.B. 422-417

D.B. 427-66

SEE SW PLAT 114

Pt. OL 102
4.069 ac. (net)

Pt. OL 101
6.744 ac.

10.940 ac. (Total, by deed)
- 0.129 ac. (D.B. 427-104)
10.811 ac. (net)

CLARK AVE.

50' R/W

PT. OL 101 & OL 102 (underlying fee)
SOPHIA D. BROERMAN
D.B. 231-308

Pt. OL 101
SEE SW PLAT 116

PT. OL 101 0.034 AC.
LAURA POLING & MARY POLING
D.B. 105-481

Pt. OL 101 City of Piqua 0.742 ac.
D.B. 307-571

Pt. OL 101 0.344 ac. Harnerstone Holdings LLC
D.B. 2019OR-02863

Pt. OL 101 City of Piqua 0.744 ac.
D.B. 428-667

Pt. OL 101 0.310 ac. Todd Battson
D.B. 7489-926

Pt. OL 101 City of Piqua 0.745 ac.
D.B. 307-569

Pt. OL 101 0.344 ac. Peary S. Williams
D.B. 688-207

Pt. OL 101 City of Piqua 1.194 ac.
D.B. 307-572

Pt. OL 101 0.551 ac. City of Piqua
D.B. 2018OR-02717

Pt. OL 101
5.297 ac.

City of Piqua
D.B. 379-408

BROOK STREET

Mc KINLEY AVE.

MANIER AVE.

PT. OL 101 (underlying fee)
FREDA E. SMITH & MAYME SMITH
D.B. 245-80

CORPORATION LINE
SE CORNER, OUTLOT 101
NW CORNER, SW QUARTER, SECTION 19

PT. OL 336

IL 6698