

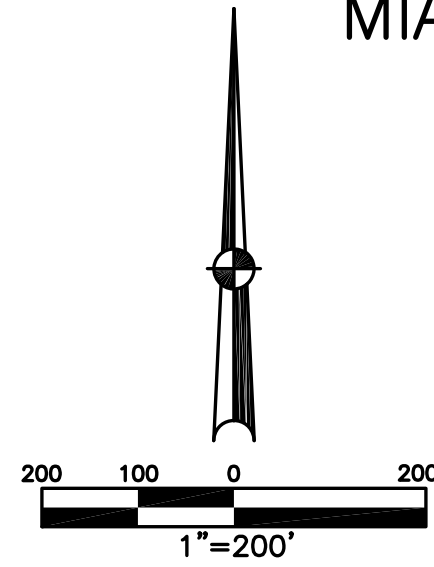
UNION TOWNSHIP
MIAMI COUNTY, OHIO

SECTION 1 TOWN 7 RANGE 4
SOUTHEAST QUARTER

PARCEL NUMBER
L32-
L33-

PLAT 1-A

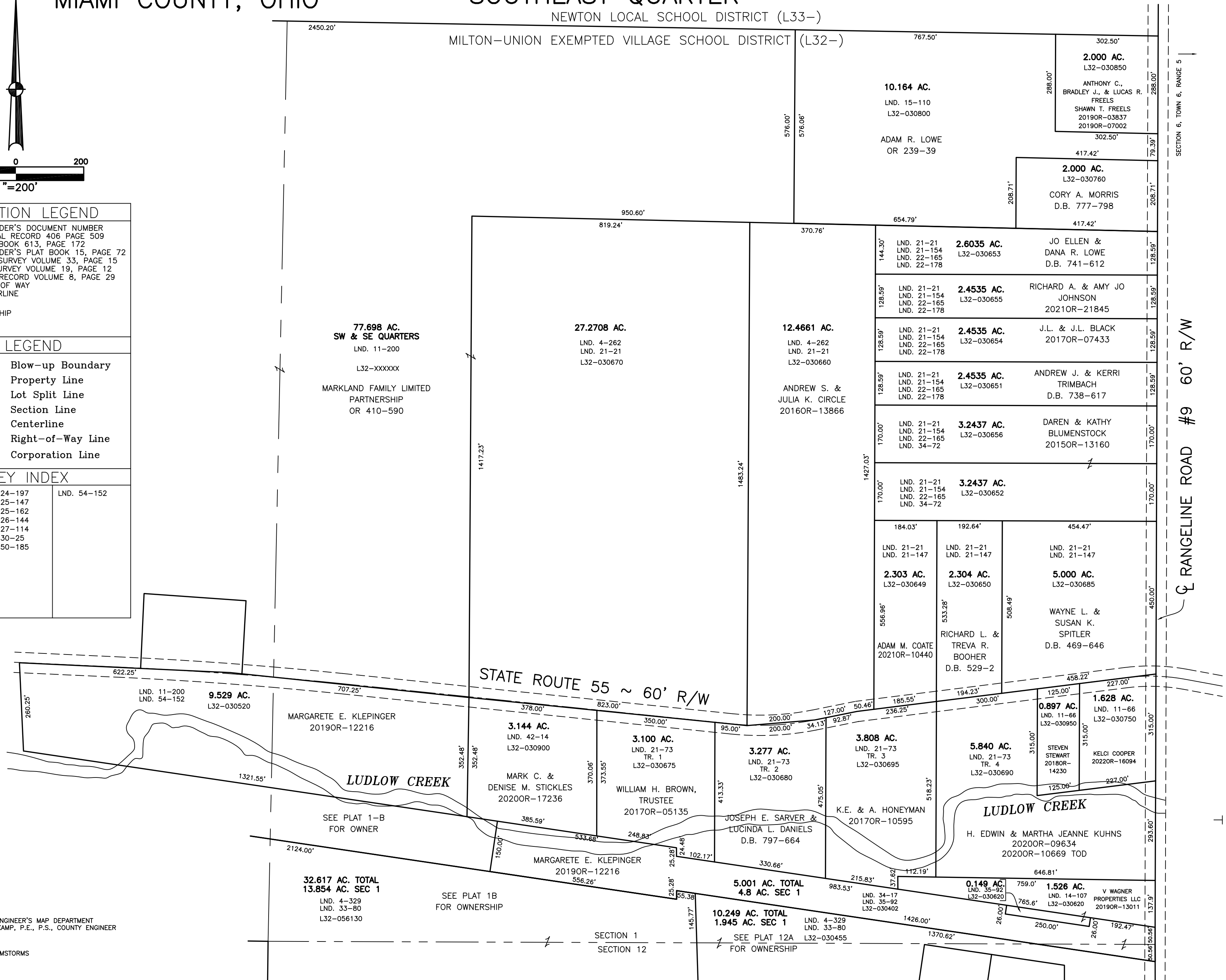
NEWTON LOCAL SCHOOL DISTRICT (L33-)



| ABBREVIATION LEGEND | | |
|---------------------|---|----------------------------------|
| 2014OR-07759 | = | RECORDER'S DOCUMENT NUMBER |
| OR 408-509 | = | OFFICIAL RECORD 408 PAGE 509 |
| D.B. 613-172 | = | DEED BOOK 613, PAGE 172 |
| REC. 15-72 | = | RECORDER'S PLAT BOOK 15, PAGE 72 |
| LND. 33-15 | = | LAND SURVEY VOLUME 33, PAGE 15 |
| LOT 19-12 | = | LOT SURVEY VOLUME 19, PAGE 12 |
| R.R. 8-29 | = | ROAD RECORD VOLUME 8, PAGE 29 |
| R/W | = | RIGHT OF WAY |
| C. | = | CENTERLINE |
| AC. | = | ACRES |
| TWP. | = | TOWNSHIP |
| TR. | = | TRACT |
| IL | = | INLOT |

| LINE LEGEND | |
|-------------|-------------------|
| | Blow-up Boundary |
| | Property Line |
| | Lot Split Line |
| | Section Line |
| | Centerline |
| | Right-of-Way Line |
| | Corporation Line |

| SURVEY INDEX | | |
|--------------|-------------|-------------|
| LND. 4-329 | LND. 24-197 | LND. 54-152 |
| LND. 11-200 | LND. 25-147 | |
| LND. 14-86 | LND. 25-162 | |
| LND. 14-133 | LND. 26-144 | |
| LND. 19-105 | LND. 27-114 | |
| LND. 19-158 | LND. 30-25 | |
| LND. 20-107 | LND. 50-185 | |



PREPARED BY: MIAMI COUNTY ENGINEER'S MAP DEPARTMENT
PAUL P. HUELSKAMP, P.E., P.S., COUNTY ENGINEER
DATE: MARCH 20, 2015 DS
REVISED: November 8, 2022 M2STORMS

SECTION 6, TOWN 6, RANGE 5
RANGELINE ROAD #9 60' R/W