

PIQUA Corporation

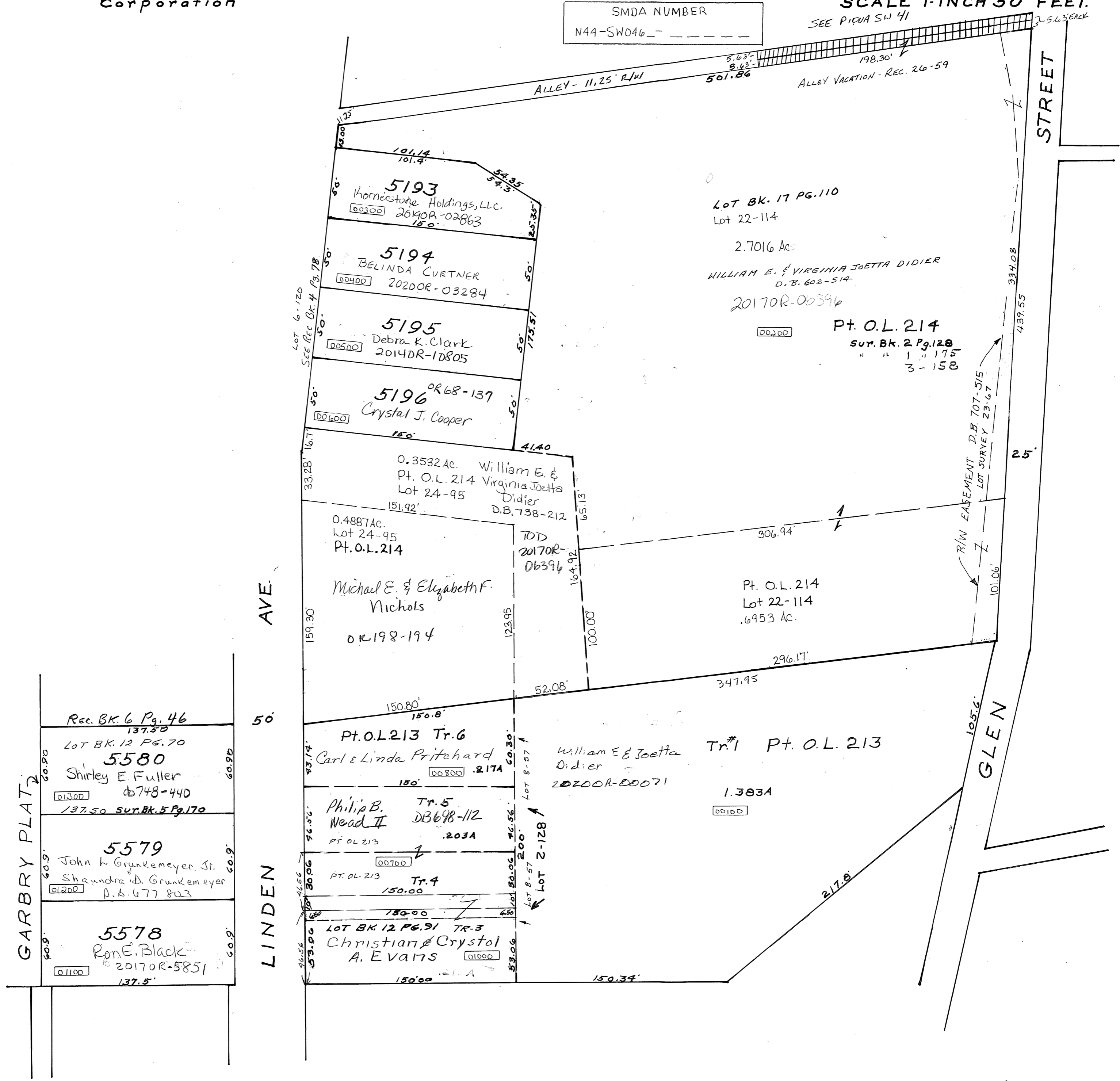
S.W. SECTION

PLAT NO. 46
SCALE 1-INCH = 50 FEET.

SMDA NUMBER
N44-SW046 - - - - -

SEE PIQUA SW 41

3-5.63' EACH



ALLEY - 11.25' R/W

ALLEY VACATION - REC. 26-59

STREET

5193
Hornestone Holdings, LLC.
26190R-02863

5194
BELINDA CURTNER
20200R-03284

5195
Debra K. Clark
20140R-10805

5196
Crystal J. Cooper

Lot BK. 17 PG. 110
Lot 22-114
2.7016 Ac.
WILLIAM E. & VIRGINIA JOETTA DIDIER
D.B. 602-514
20170R-00396

Pt. O.L. 214
SUR. BK. 2 Pg. 128
" " 1 " 175
" " 3 " 158

0.3532 Ac. William E. & Virginia Joetta Didier
Pt. O.L. 214 Lot 24-95
D.B. 738-212

0.4887 Ac. Lot 24-95
Pt. O.L. 214
Michael E. & Elizabeth F. Nichols
OR 198-194

Pt. O.L. 214
Lot 22-114
.6953 Ac.

GARRY PLAT

Res. BK. 6 Pg. 46
137.50
LOT BK. 12 PG. 70
5580
Shirley E. Fuller
DB 748-440

5579
John H. Grunkemeyer, Jr.
Shaundra D. Grunkemeyer
P.B. 677 803

5578
Ron E. Black
20170R-5851

LINDEN AVE

50'

Pt. O.L. 213 Tr. 6
Carl & Linda Pritchard
DB 817A

Tr. 5
Philip B. Wead II
DB 698-112
PT. O.L. 213
203A

Tr. 4
PT. O.L. 213
150.00

Tr. 3
LOT BK. 12 PG. 91
Christian & Crystal A. Evans

William E & Joetta Didier
20200R-00071
Tr. #1 Pt. O.L. 213
1.3834

GLEN