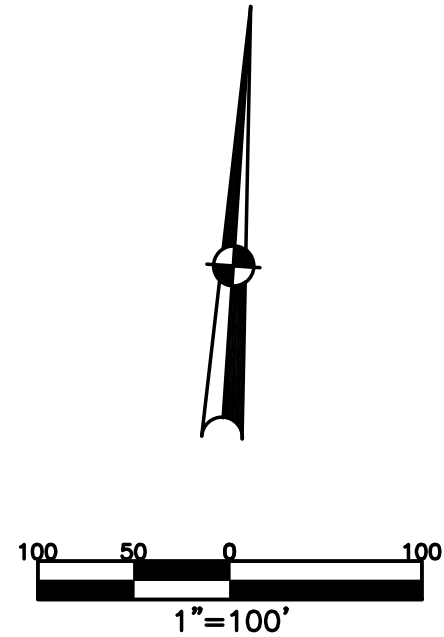


SECTION 13
TOWN 8
RANGE 5

CITY OF PIQUA
MIAMI COUNTY, OHIO

PARCEL ID NUMBER
N44-_____

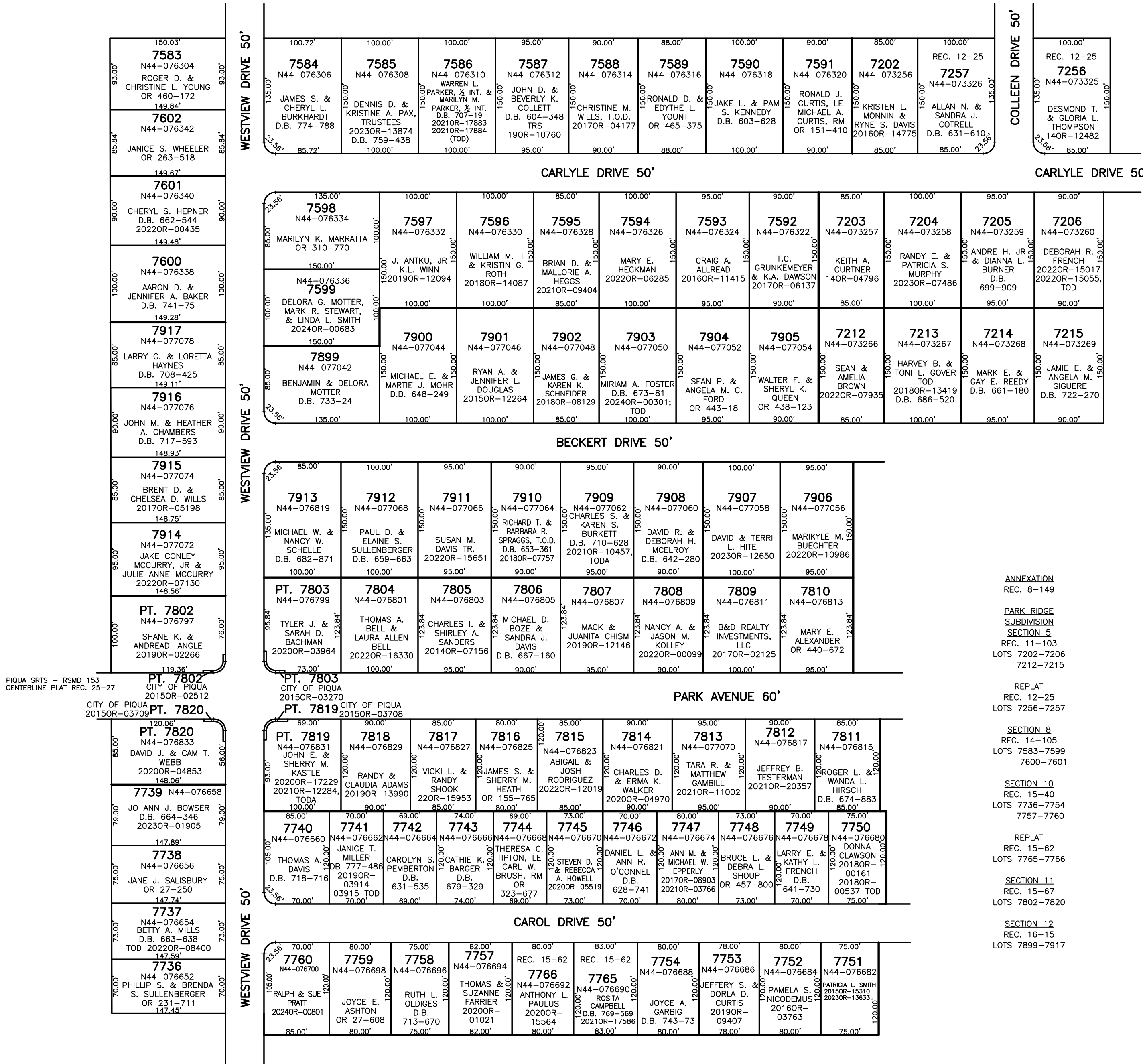
PLAT NW 142



ABBREVIATION LEGEND	
2014OR-07759	= RECORDER'S DOCUMENT NUMBER OR 406-509
D.B. 613-172	= DEED BOOK 613, PAGE 172
REC. 15-72	= RECORDER'S PLAT BOOK 15, PAGE 72
LND. 33-15	= LAND SURVEY VOLUME 33, PAGE 15
LOT 19-12	= LOT SURVEY VOLUME 19, PAGE 12
R.R. 8-29	= ROAD RECORD VOLUME 8, PAGE 29
R/W	= RIGHT OF WAY
CL	= CENTERLINE
AC.	= ACRES
TWP.	= TOWNSHIP
TR.	= TRACT
IL	= INLOT

LINE LEGEND	
	Blow-up Boundary
	Property Line
	Lot Split Line
	Section Line
	Centerline
	Right-of-Way Line
	Corporation Line

SURVEY INDEX	
REC. 8-149	RSMD 153
REC. 11-103	
REC. 12-25	
REC. 14-105	
REC. 15-40	
REC. 15-62	
REC. 15-67	
REC. 16-15	
REC. 25-27	



PREPARED BY: MIAMI COUNTY ENGINEER'S MAP DEPARTMENT
PAUL P. HUELSKAMP, P.E., P.S., COUNTY ENGINEER
DATE: MARCH 3, 2014 MB
REVISED: January 29, 2024 APALMER

ANNEXATION
REC. 8-149

PARK RIDGE
SUBDIVISION
SECTION 5
REC. 11-103
LOTS 7202-7206
7212-7215

REPLAT
REC. 12-25
LOTS 7256-7257

SECTION 8
REC. 14-105
LOTS 7583-7599
7600-7601

SECTION 10
REC. 15-40
LOTS 7736-7754
7757-7760

REPLAT
REC. 15-62
LOTS 7765-7766

SECTION 11
REC. 15-67
LOTS 7802-7820

SECTION 12
REC. 16-15
LOTS 7899-7917