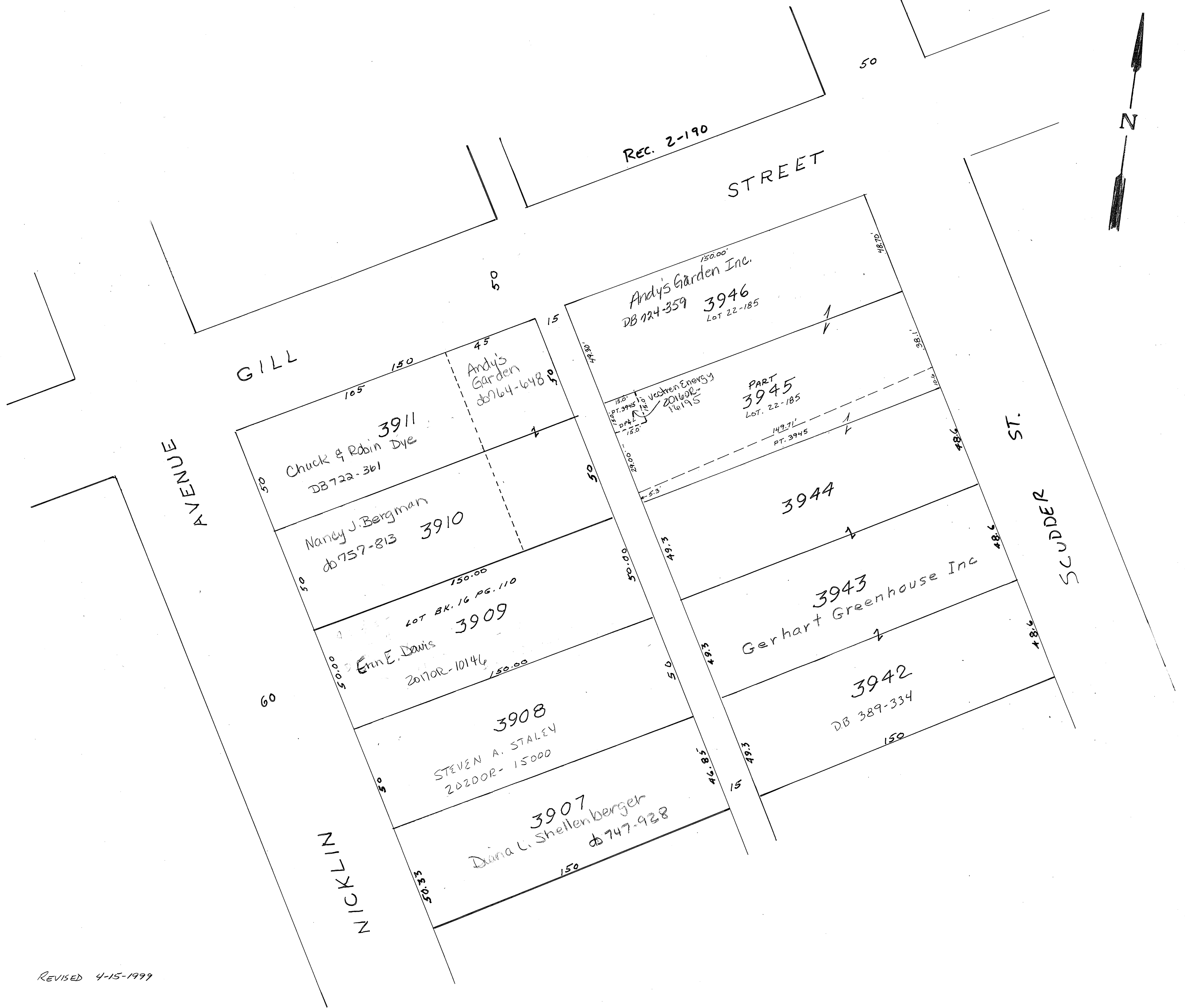


PIQUA  
Corporation

N.W. SECTION

PLAT NO. 57  
SCALE 1-INCH=30 FEET



GILL AVENUE

NICKLILIN AVENUE

REC. 2-190 STREET

SCUDDER ST.

3911  
Chuck & Robin Dye  
DB 722-361

3910  
Nancy J. Bergman  
db 757-813

3909  
Ernie E. Davis  
2017OR-10146  
LOT BK. 16 PG. 110

3908  
STEVEN A. STALEY  
2022OR-15000

3907  
Diana L. Shellenberger  
db 747-928

3946  
Andy's Garden Inc.  
DB 724-359  
LOT 22-185

PART 3945  
LOT 22-185

3944

3943  
Gerhart Greenhouse Inc

3942  
DB 389-334