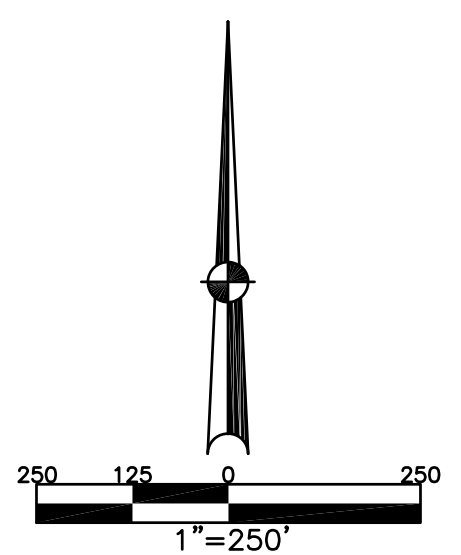


SECTION 14, 11
TOWN 8
RANGE 5

CITY OF PIQUA
MIAMI COUNTY, OHIO

SMDA NUMBER
N44-NW150_--

PLAT NW 150



ANNEXATIONS:
LOT 6153
REC. 8-149
LOTS 7680-7682
REC. 14-134
LOT 8137
REC. 17-137

9063
22.724 ACRES
REC. 27-21
REC. 17-137
LND. 37-66
LOT 18-138
LOT 22-111

CRAYCON HOMES, INC.
D.B. 670-511
D.B. 685-642
D.B. 688-127

ABBREVIATION LEGEND

D.B. 613-172	= DEED BOOK 613, PAGE 172
REC. 15-72	= RECORDER'S PLAT BOOK 15, PAGE 72
LND. 33-15	= LAND SURVEY VOLUME 33, PAGE 15
LOT 19-12	= LOT SURVEY VOLUME 19, PAGE 12
R.R. 8-29	= ROAD RECORD VOLUME 8, PAGE 29
R/W	= RIGHT OF WAY
CL	= CENTERLINE
AC.	= ACRES
TWP.	= TOWNSHIP
TR.	= TRACT
Ⓜ	= LOT CREATED BY RECORDER'S PLAT

LINE LEGEND

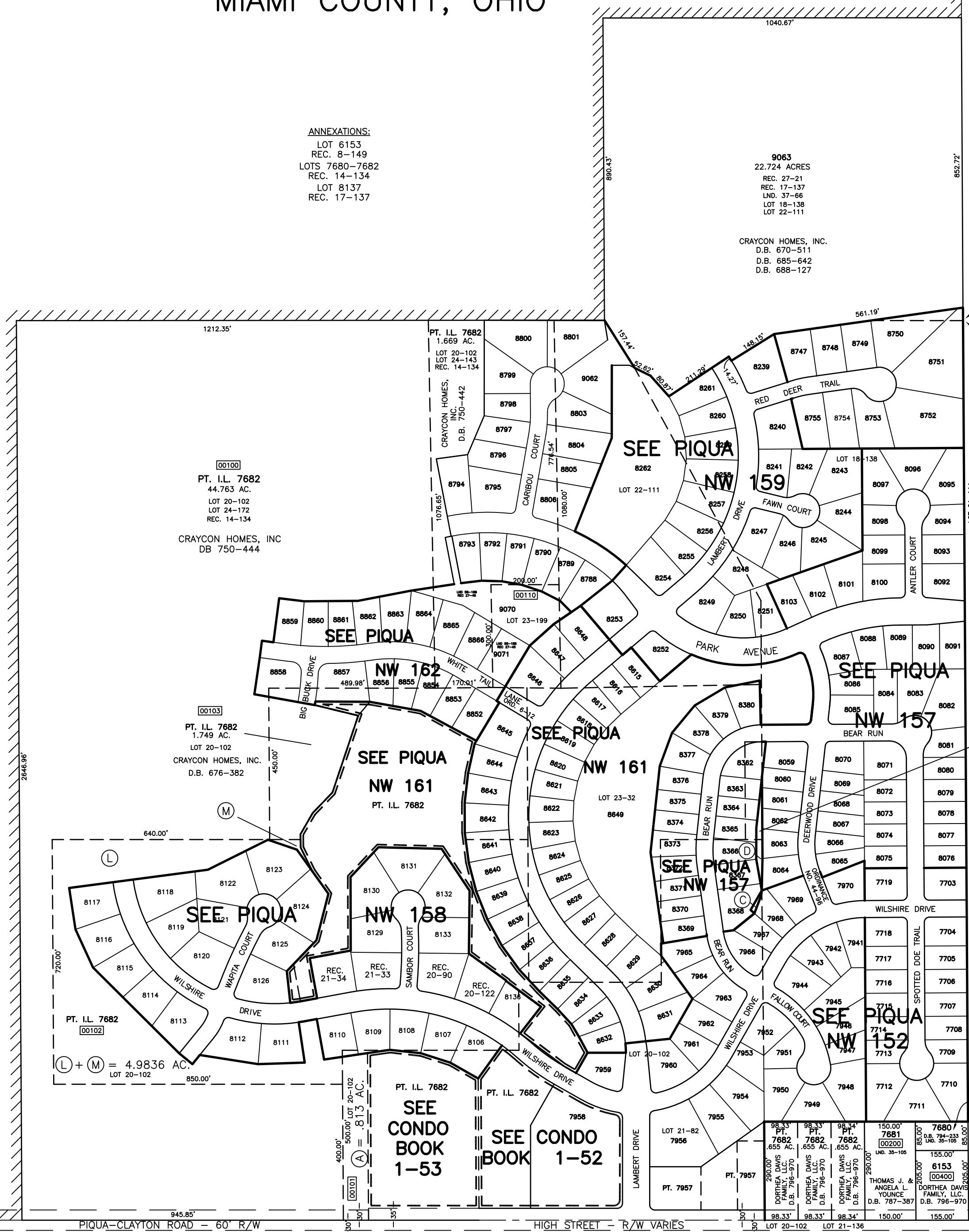
	Blow-up Boundary
	Property Line
	Lot Split Line
	Section Line
	Centerline
	Right-of-Way Line
	Corporation Line

SURVEY INDEX

LOT 18-138	REC. 8-149	CONDO BOOK 1-52
LOT 20-102	(ANNEXATION)	
LOT 21-82	REC. 14-134	
LOT 21-111	(ANNEXATION)	
LOT 21-136	REC. 15-38	
LOT 22-61	REC. 16-128	
LOT 22-111	REC. 17-97	
LOT 23-32	REC. 17-136	
LOT 23-199	REC. 17-137	
LOT 24-143	(ANNEXATION)	
LOT 24-172	REC. 18-60	
LND 57-136	REC. 18-120	
LND 58-188	REC. 19-107	
	REC. 20-62, 62A	
	REC. 20-117, 117A	
	REC. 20-122	
	REC. 21-72A	
	REC. 21-21	
	REC. 27-45	

OWNERSHIP/ACREAGE LEGEND

(A) = .813 AC.	} TOTAL = 0.871 AC. CRAYCON HOMES, INC. D.B. 652-556 D.B. 677-303
(C) = .014 AC.	
(D) = .044 AC.	
(F) = .010 AC.	} CRAYCON HOMES, INC. D.B. 700-53
(G) = .7985 AC.	
(L) + (M) = 4.9836 AC.	} CRAYCON HOMES, INC. D.B. 664-588 D.B. 677-303



SE CORNER SECTION 11
NE CORNER SECTION 14

(00105)
PT. I.L. 7682
.045 AC.
LOT 22-61
CRAYCON HOMES, INC.
AN OHIO CORPORATION
D.B. 685-642

DORTHEA J. DAVIS,
TRUSTEE
2015OR-05563

ANNEXATIONS:
LOT 6153
REC. 8-149
LOTS 7680-7682
REC. 14-134

PREPARED BY: MIAMI COUNTY ENGINEER'S MAP DEPARTMENT
PAUL P. HUELSKAMP, P.E., P.S., COUNTY ENGINEER
DATE: OCTOBER 15, 1996
REVISED: February 25, 2019 IGRIFIN