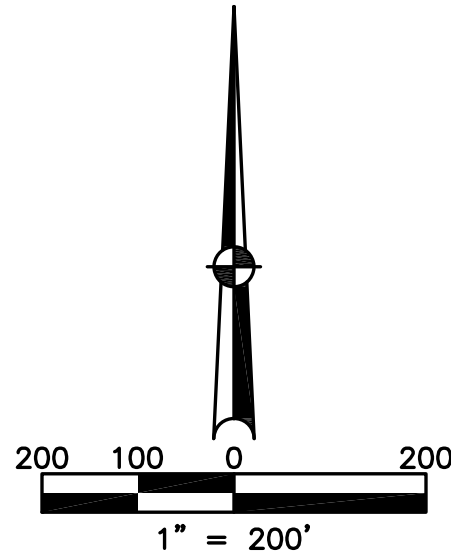


WASHINGTON TWP.  
MIAMI COUNTY, OHIO

SECTION 35 TOWN 9 RANGE 5  
NORTHEAST QUARTER

PARCEL NUMBER  
M40-\_\_\_\_\_

PLAT 29-A



**ABBREVIATION LEGEND**

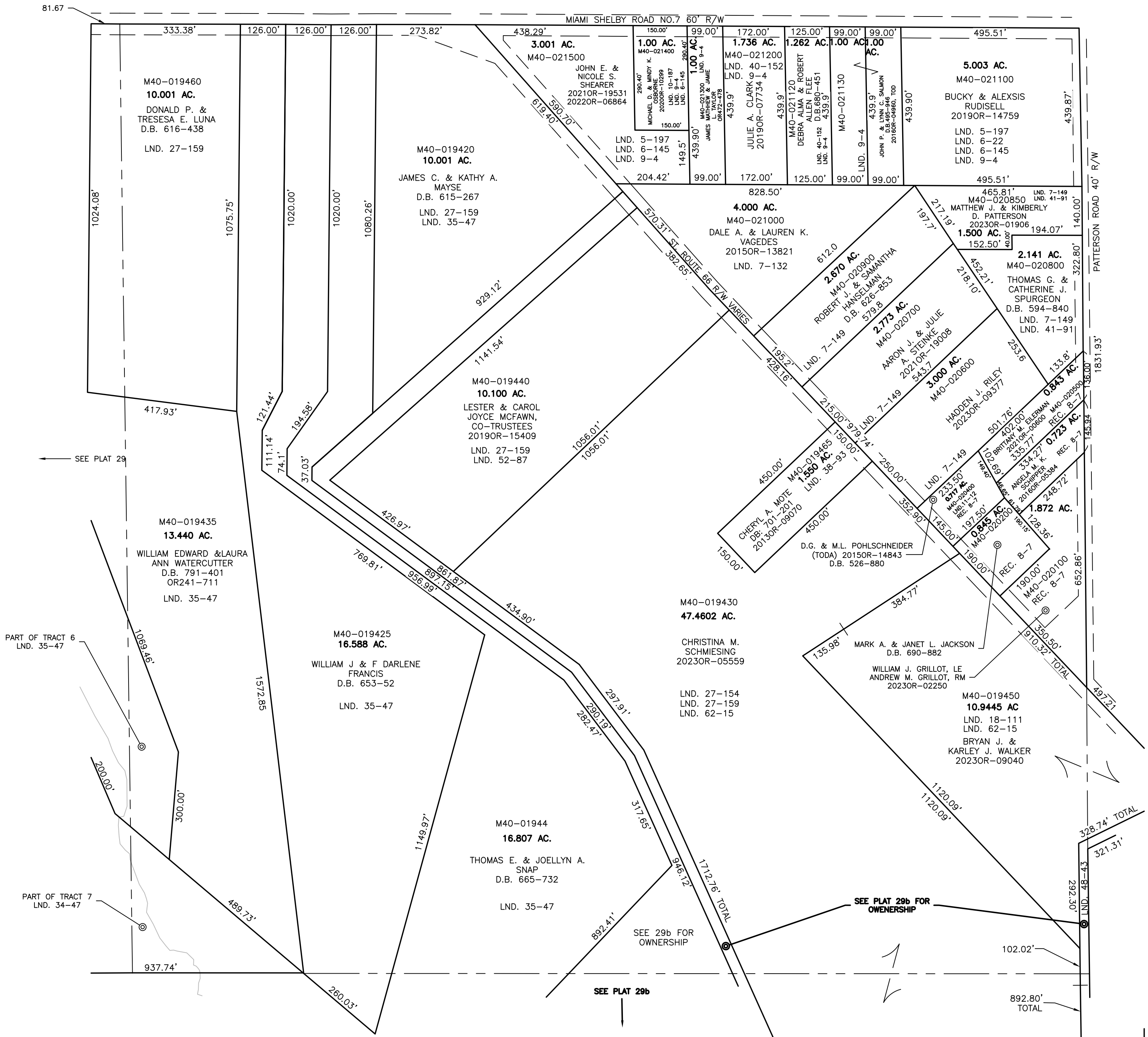
2014OR-00759	=	RECORDER'S DOCUMENT NUMBER
OR 406-509	=	OFFICIAL RECORD 406 PAGE 509
D.B. 613-172	=	DEED BOOK 613, PAGE 172
REC. 15-72	=	RECORDER'S PLAT BOOK 15, PAGE 72
LND. 33-15	=	LAND SURVEY VOLUME 33, PAGE 15
LOT 19-12	=	LOT SURVEY VOLUME 19, PAGE 12
R.R. 8-29	=	ROAD RECORD VOLUME 8, PAGE 29
R/W	=	RIGHT OF WAY
C	=	CENTERLINE
AC.	=	ACRES
TWP.	=	TOWNSHIP
TR.	=	TRACT
IL	=	INLOT

**LINE LEGEND**

	Blow-up Boundary
	Property Line
	Lot Split Line
	Section Line
	Centerline
	Right-of-Way Line
	Corporation Line

**SURVEY INDEX**

LND.	LND. CONT.	REC.
LND. 38-93	LND. 62-15	REC. 8-7
LND. 35-47		
LND. 27-159		
LND. 18-111		
LND. 35-147		
LND. 5-197		
LND. 6-145		
LND. 10-187		
LND. 9-4		
LND. 40-152		
LND. 6-22		
LND. 7-132		
LND. 7-149		
LND. 11-12		
LND. 41-91		
LND. 27-154		
LND. 48-43		



PREPARED BY: MIAMI COUNTY ENGINEER'S MAP DEPARTMENT  
PAUL P. HUELSKAMP, P.E., P.S., COUNTY ENGINEER  
DATE: 01. 25, 2022 JOSH ZWEZ  
REVISED: Aug. 29, 2023 JBOGART

SEE PLAT 29b

SEE PLAT 29b FOR OWNERSHIP

SEE 29b FOR OWNERSHIP

102.02'

892.80' TOTAL

328.74' TOTAL

321.31'

292.30'

102.02'

892.80' TOTAL

1120.09'

1120.09'

497.21'

652.86'

1831.93'

145.94'

145.94'

145.94'

145.94'

145.94'

145.94'

145.94'

145.94'

145.94'

145.94'

145.94'

145.94'

145.94'

145.94'

145.94'

145.94'

145.94'

145.94'

145.94'

145.94'

145.94'

145.94'

145.94'

145.94'

145.94'

145.94'

145.94'

145.94'

145.94'

145.94'

145.94'

145.94'

145.94'

145.94'

145.94'

145.94'

145.94'

145.94'

145.94'

145.94'

145.94'

145.94'

145.94'

145.94'

145.94'

145.94'

145.94'

145.94'

145.94'

145.94'

145.94'

145.94'