

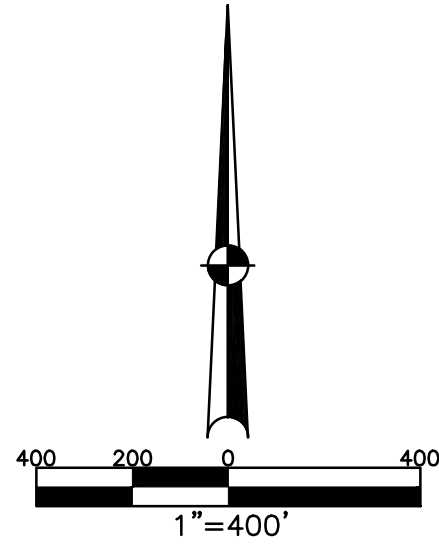
WASHINGTON TOWNSHIP  
MIAMI COUNTY, OHIO

SECTION 34 TOWN 8 RANGE 5

PLAT 27

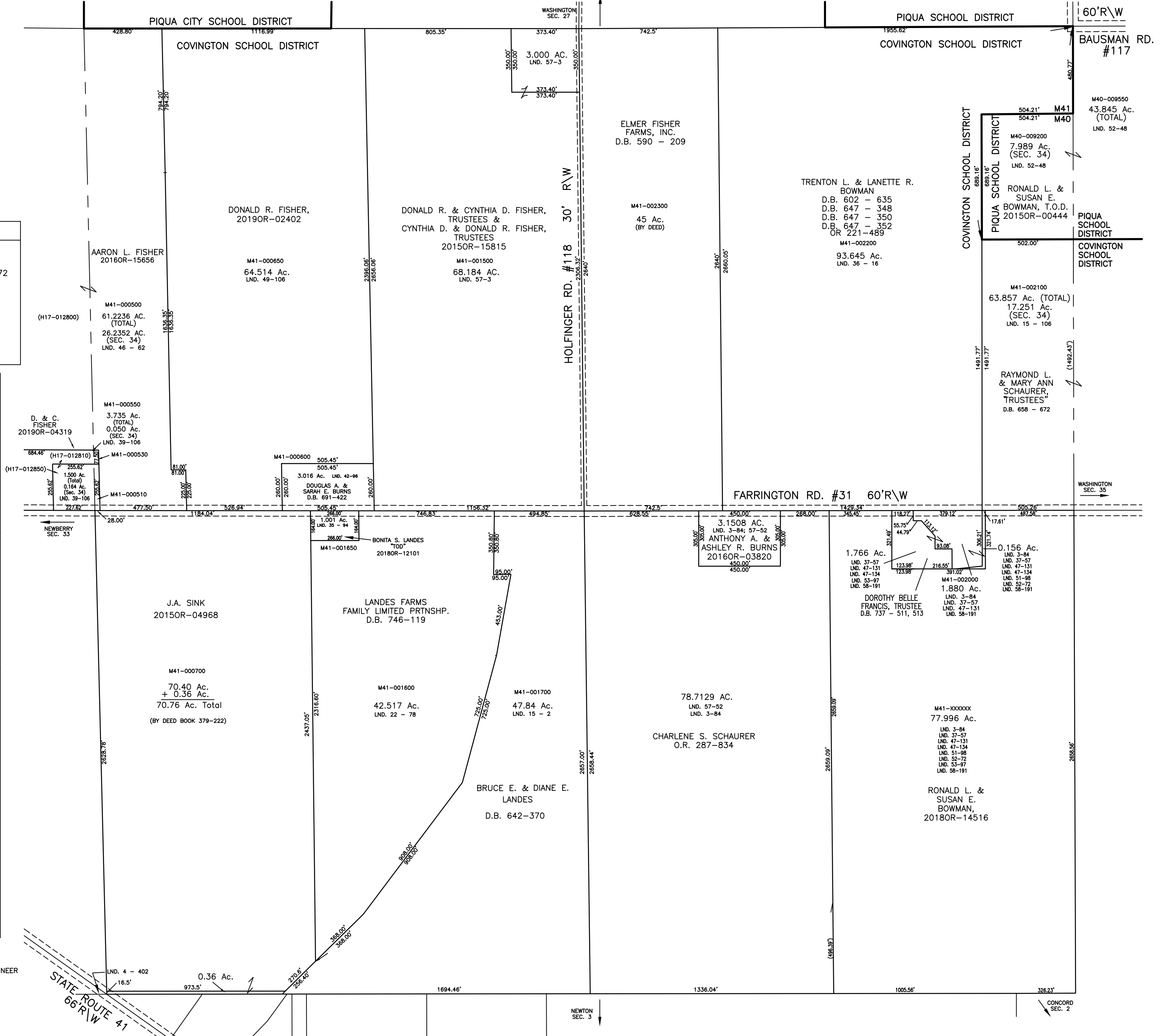
(PIQUA S.D.)  
PARCEL NUMBER  
M40 - \_\_\_\_\_

(COVINGTON S.D.)  
PARCEL NUMBER  
M41 - \_\_\_\_\_



ABBREVIATION LEGEND	
20140R-07759	= RECORDER'S DOCUMENT NUMBER
OR 406-509	= OFFICIAL RECORD 406 PAGE 509
D.B. 613-172	= DEED BOOK 613, PAGE 172
REC. 15-72	= RECORDER'S PLAT BOOK 15, PAGE 72
LND. 33-15	= LAND SURVEY VOLUME 33, PAGE 15
LOT 19-12	= LOT SURVEY VOLUME 19, PAGE 12
R.R. 8-29	= ROAD RECORD VOLUME 8, PAGE 29
R/W	= RIGHT OF WAY
CL	= CENTERLINE
AC.	= ACRES
TWP.	= TOWNSHIP
TR.	= TRACT
②	= LOT CREATED BY RECORDER'S PLAT

SURVEY INDEX			
NORTHEAST QUARTER			
LND. 2 - 74			
LND. 15 - 106			
LND. 36 - 16			
LND. 52-48			
SOUTHEAST QUARTER			
LND. 2 - 74			
LND. 3 - 84			
LND. 37 - 57			
LND. 47-131			
LND. 47-134			
LND. 51 - 98			
LND. 52 - 72			
LND. 53 - 97			
LND. 57 - 52			
LND. 58-191			
SOUTHWEST QUARTER			
LND. 2 - 74			
LND. 4 - 402			
LND. 15 - 2			
LND. 22 - 78			
LND. 35 - 94			
NORTHWEST QUARTER			
LND. 39 - 106			
LND. 42-96			
LND. 46-62			
LND. 49-106			
LND. 57-3			



PREPARED BY: MIAMI COUNTY ENGINEER'S MAP DEPARTMENT  
PAUL P. HUELSKAMP, P.E., P.S., COUNTY ENGINEER  
DATE: NOVEMBER 1992  
REVISED: May 1, 2019 DVENTURA