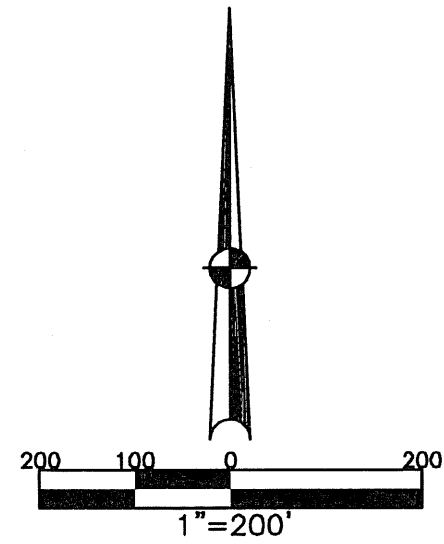


WASHINGTON TWP.  
MIAMI COUNTY, OHIO

PART NORTH HALF  
SECTION 29 TOWN 6 RANGE 6

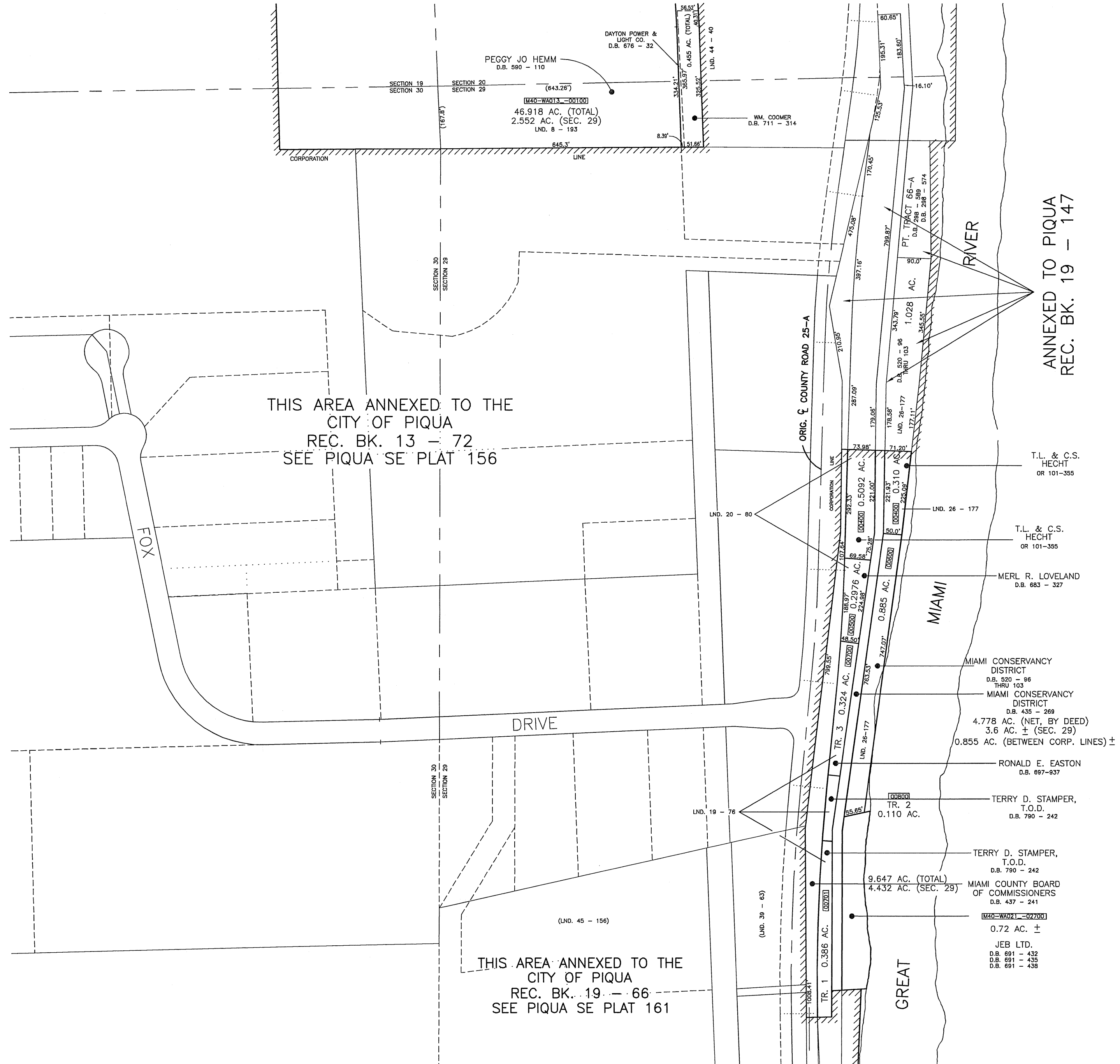
SMDA NUMBER  
M40-WA020-

PLAT 20-A



ABBREVIATION LEGEND	
OR 101-355	= OFFICIAL RECORD 101 PAGE 355
D.B. 613-172	= DEED BOOK 613, PAGE 172
REC. 15-72	= RECORDER'S PLAT BOOK 15, PAGE 72
LND. 33-15	= LAND SURVEY VOLUME 33, PAGE 15
LOT 19-12	= LOT SURVEY VOLUME 19, PAGE 12
R.R. 8-29	= ROAD RECORD VOLUME 8, PAGE 29
R/W	= RIGHT OF WAY
CL	= CENTERLINE
AC.	= ACRES
TWP.	= TOWNSHIP
TR.	= TRACT
Ⓞ	= LOT CREATED BY RECORDER'S PLAT

SURVEY INDEX	
LND. 8 - 193	REC. 9 - 71
LND. 10 - 117	REC. 11 - 133
LND. 19 - 76	REC. 12 - 790
LND. 20 - 80	REC. 13 - 72
LND. 25 - 27	REC. 14 - 36
LND. 26 - 177	REC. 19 - 66
LND. 28 - 113	
LND. 29 - 28	
LND. 39 - 63	
LND. 44 - 40	
LND. 45 - 156	
	R.C. 53
	R.C. 88



ANNEXED TO PIQUA  
REC. BK. 19 - 147

T.L. & C.S.  
HECHT  
OR 101-355

T.L. & C.S.  
HECHT  
OR 101-355

MERL R. LOVELAND  
D.B. 683 - 327

MIAMI CONSERVANCY  
DISTRICT  
D.B. 529 - 86  
THRU 103

MIAMI CONSERVANCY  
DISTRICT  
D.B. 435 - 269  
4.778 AC. (NET, BY DEED)  
3.6 AC. ± (SEC. 29)  
0.855 AC. (BETWEEN CORP. LINES) ±

RONALD E. EASTON  
D.B. 697-937

TERRY D. STAMPER,  
T.O.D.  
D.B. 790 - 242

TERRY D. STAMPER,  
T.O.D.  
D.B. 790 - 242

MIAMI COUNTY BOARD  
OF COMMISSIONERS  
D.B. 437 - 241

M40-WA021-027000  
0.72 AC. ±

JEB LTD.  
D.B. 691 - 432  
D.B. 691 - 436  
D.B. 691 - 438

PREPARED BY: MIAMI COUNTY ENGINEER'S MAP DEPARTMENT  
DOUGLAS L. CHRISTIAN, COUNTY ENGINEER  
DATE: MAY 18, 1992  
REVISED: JUNE 2, 2010 DV