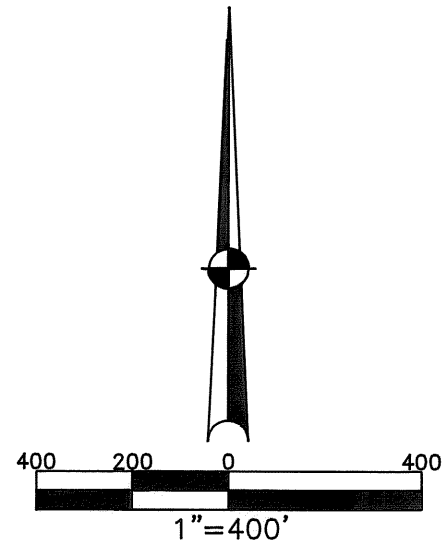


WASHINGTON TWP.  
MIAMI COUNTY, OHIO

SECTION 29 TOWN 6 RANGE 6

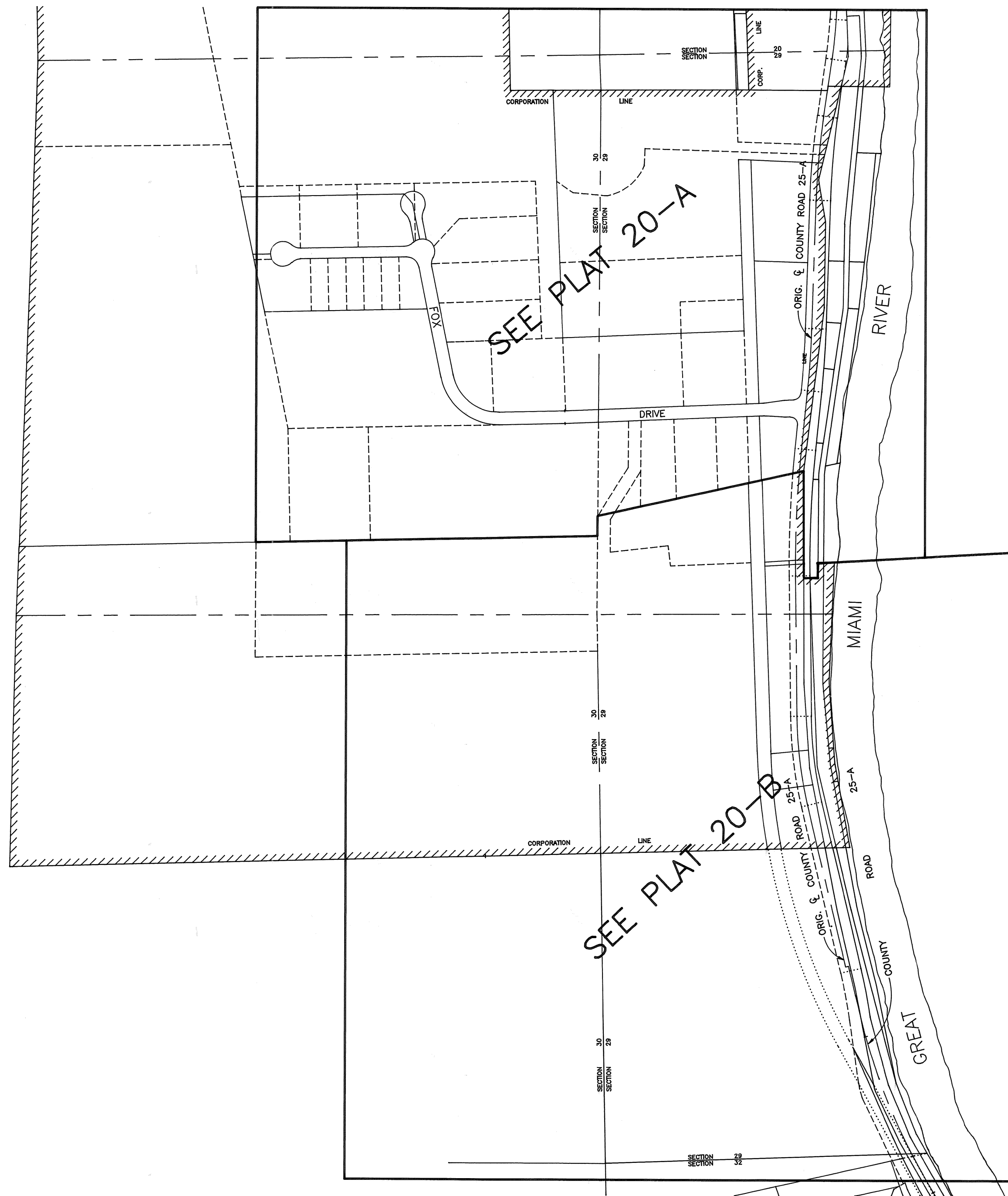
SMDA NUMBER  
M40-WA020\_ -

PLAT 20



ABBREVIATION LEGEND	
D.B. 613-172	= DEED BOOK 613, PAGE 172
REC. 15-72	= RECORDER'S PLAT BOOK 15, PAGE 72
LND. 33-15	= LAND SURVEY VOLUME 33, PAGE 15
LOT 19-12	= LOT SURVEY VOLUME 19, PAGE 12
R.R. 8-29	= ROAD RECORD VOLUME 8, PAGE 29
R/W	= RIGHT OF WAY
CL	= CENTERLINE
AC.	= ACRES
TWP.	= TOWNSHIP
TR.	= TRACT
Ⓢ	= LOT CREATED BY RECORDER'S PLAT

SURVEY INDEX			
NORTH HALF		HALF	
LND. 8 - 193		REC. 9 - 71	
LND. 10 - 117		REC. 11 - 133	
LND. 19 - 76		REC. 12 - 790	
LND. 25 - 80		REC. 13 - 72	
LND. 25 - 27		REC. 14 - 36	
LND. 26 - 177		REC. 19 - 66	
LND. 26 - 194			
LND. 28 - 113			
LND. 28 - 28			
LND. 36 - 63			
LND. 44 - 40			
LND. 45 - 156			
		R.C. 53	
		R.C. 68	
SOUTH HALF		HALF	
LND. 4 - 136		REC. 12 - 790	
LND. 19 - 76			
LND. 27 - 121			
LND. 40 - 70			
		R.C. 53	
		R.C. 68	



PREPARED BY: MIAMI COUNTY ENGINEER'S MAP DEPARTMENT  
DOUGLAS L. CHRISTIAN, COUNTY ENGINEER  
DATE: MAY 22, 1992  
REV.: JANUARY 17, 2002