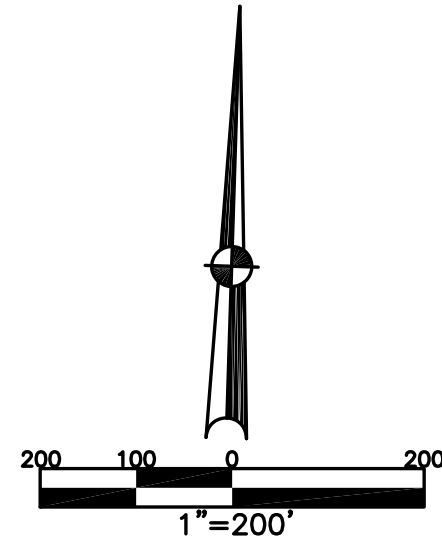


WASHINGTON TWP.
MIAMI COUNTY, OHIO

SOUTHWEST QUARTER
SECTION 22 TOWN 8 RANGE 5

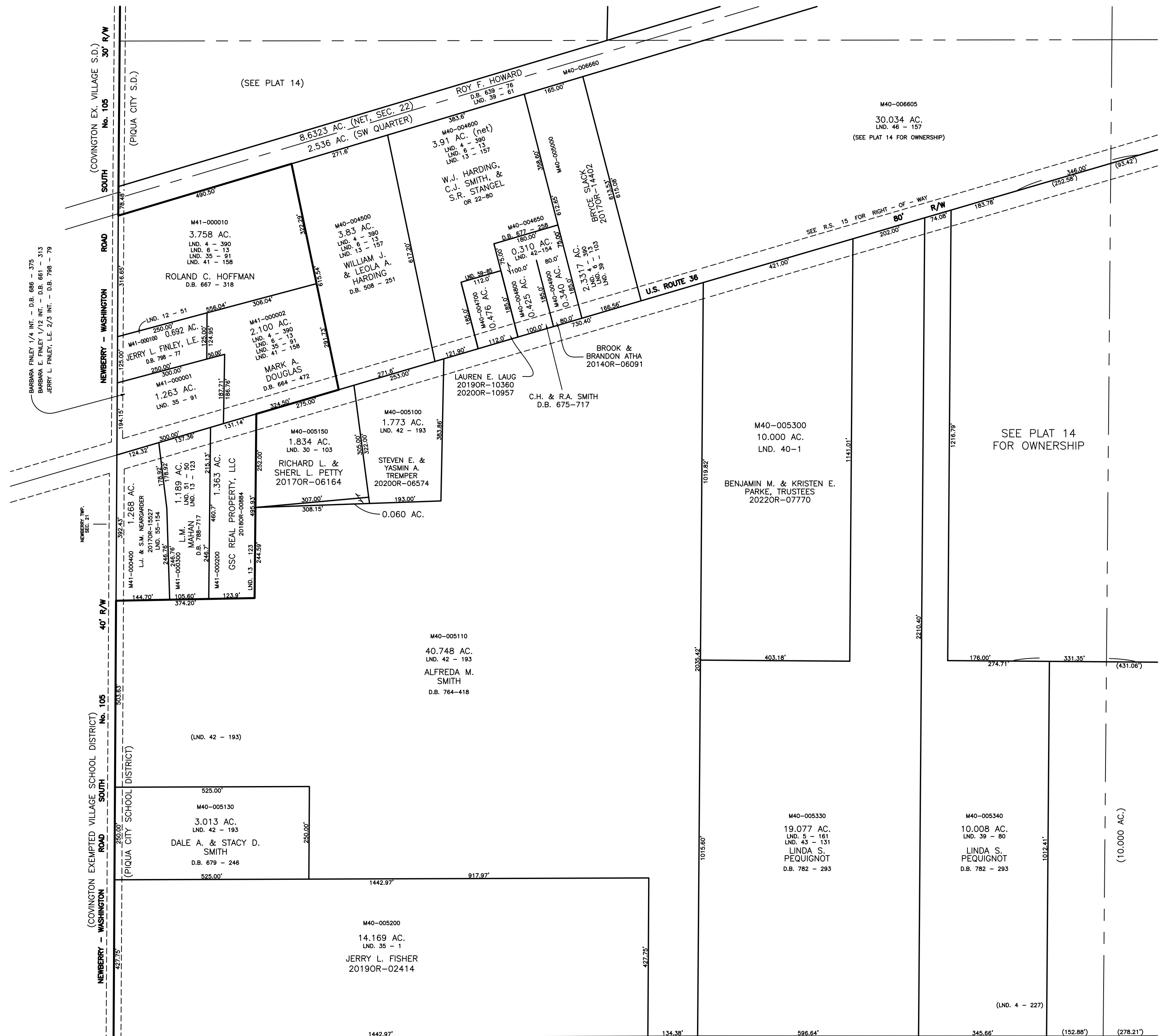
PLAT 14 A



ABBREVIATION LEGEND		
20140R-07759	=	RECORDER'S DOCUMENT NUMBER
OR 406-509	=	OFFICIAL RECORD 406 PAGE 509
D.B. 677-326	=	DEED BOOK 677, PAGE 326
REC. 18-87	=	RECORDER'S PLAT BOOK 18, PAGE 87
LND. 56-145	=	LAND SURVEY VOLUME 56, PAGE 145
LOT 24-200	=	LOT SURVEY VOLUME 24, PAGE 200
R.R. 8-18	=	ROAD RECORD VOLUME 8, PAGE 18
R/W	=	RIGHT OF WAY
C	=	CENTERLINE
AC.	=	ACRES
TWP.	=	TOWNSHIP
TR.	=	TRACT
②	=	LOT CREATED BY RECORDER'S PLAT

LINE LEGEND		
	=	Blow-up Boundary
	=	Property Line
	=	Lot Split Line
	=	Section Line
	=	Centerline
	=	Right-of-Way Line
	=	Corporation Line

SURVEY INDEX		
LND. 2-199	LND. 41-158	R.S. 15
LND. 3-311	LND. 42-154	
LND. 4-227	LND. 42-193	
LND. 4-390	LND. 43-131	
LND. 5-33	LND. 46-157	
LND. 5-161	LND. 51-50	
LND. 6-13	LND. 55-154	
LND. 12-51	LND. 59-85	
LND. 13-34		
LND. 13-123		
LND. 13-157		
LND. 25-20		
LND. 30-103		
LND. 35-1		
LND. 35-91		
LND. 36-126		
LND. 39-61		
LND. 39-80		
LND. 39-103		
LND. 40-1		



PREPARED BY: MIAMI COUNTY ENGINEER'S MAP DEPARTMENT
PAUL P. HUELSKAMP, P.E., P.S., COUNTY ENGINEER
DATE: SEPTEMBER 29, 1992

REVISED: May 31, 2022 TAXMAPFD