

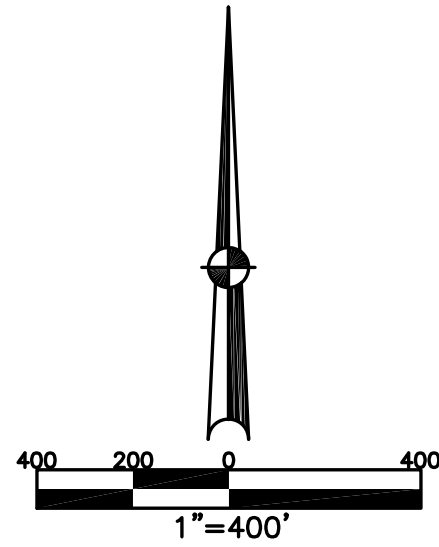
WASHINGTON TWP.
MIAMI COUNTY, OHIO

SECTION 22 TOWN 8 RANGE 5

SMDA NUMBER
M40-
PIQUA CITY SCHOOL DISTRICT

SMDA NUMBER
M41-
COVINGTON EXEMPTED VILLAGE SCHOOL DISTRICT

PLAT 14



ABBREVIATION LEGEND

2014OR-07759 = RECORDER'S DOCUMENT NUMBER
OR 406-509 = OFFICIAL RECORD 406 PAGE 509
D.B. 613-172 = DEED BOOK 613, PAGE 172
REC. 15-72 = RECORDER'S PLAT BOOK 15, PAGE 72
LND. 33-15 = LAND SURVEY VOLUME 33, PAGE 15
LOT 19-12 = LOT SURVEY VOLUME 19, PAGE 12
R.R. 8-29 = ROAD RECORD VOLUME 8, PAGE 29
R/W = RIGHT OF WAY
C. = CENTERLINE
AC. = ACRES
TWP. = TOWNSHIP
TR. = TRACT
② = LOT CREATED BY RECORDER'S PLAT

SURVEY INDEX

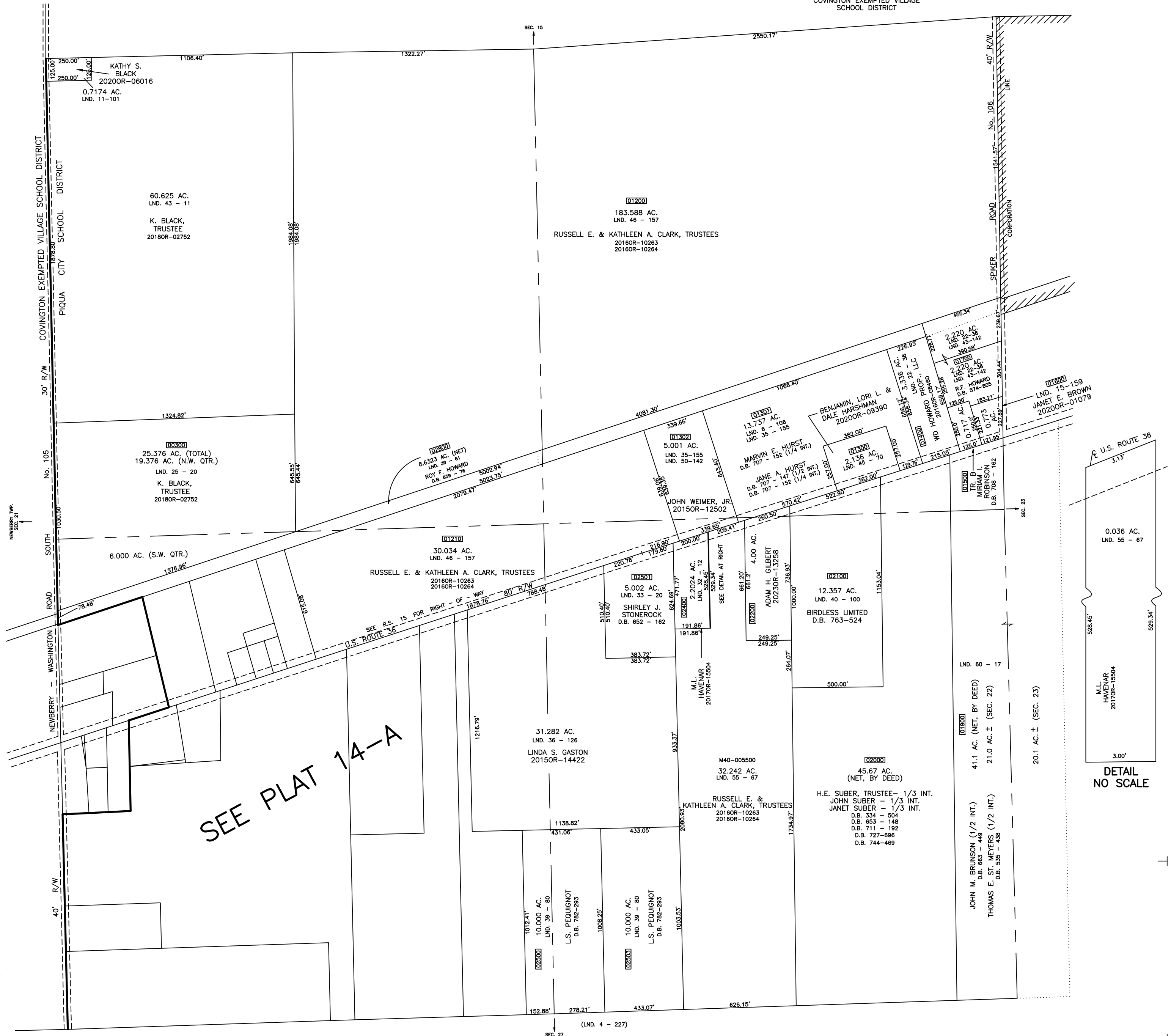
NORTHWEST QUARTER	
LND. 2 - 199	
LND. 11 - 101	
LND. 25 - 20	
LND. 39 - 81	
LND. 43 - 11	
LND. 45 - 142	
LND. 46 - 157	

NORTHEAST QUARTER	
LND. 2 - 199	
LND. 4 - 187	
LND. 6 - 106	
LND. 15 - 159	
LND. 22 - 38	
LND. 35 - 155	
LND. 39 - 61	
LND. 43 - 100	
LND. 45 - 142	
LND. 46 - 70	
LND. 48 - 157	
LND. 50 - 142	

SOUTHWEST QUARTER	
LND. 2 - 199	
LND. 3 - 311	
LND. 4 - 227	
LND. 32 - 12	
LND. 33 - 20	
LND. 35 - 155	
LND. 36 - 126	
LND. 39 - 80	
LND. 40 - 100	
LND. 46 - 157	
LND. 55 - 67	
LND. 60 - 17	

SOUTHWEST QUARTER	
LND. 2 - 199	
LND. 3 - 311	
LND. 4 - 227	
LND. 4 - 390	
LND. 5 - 33	
LND. 5 - 161	
LND. 5 - 13	
LND. 12 - 51	
LND. 13 - 34	
LND. 13 - 123	
LND. 13 - 157	
LND. 25 - 20	
LND. 30 - 103	
LND. 35 - 1	
LND. 35 - 81	
LND. 36 - 126	
LND. 39 - 80	
LND. 39 - 103	
LND. 40 - 1	
LND. 41 - 158	
LND. 42 - 154	
LND. 42 - 193	
LND. 43 - 131	
LND. 46 - 157	

PREPARED BY: MIAMI COUNTY ENGINEER'S MAP DEPARTMENT
PAUL P. HUELSKAMP, P.E., P.S., COUNTY ENGINEER
DATE: SEPTEMBER 29, 1992
REVISED: December 4, 2023 DCASSEL



SEE PLAT 14-A

DETAIL
NO SCALE