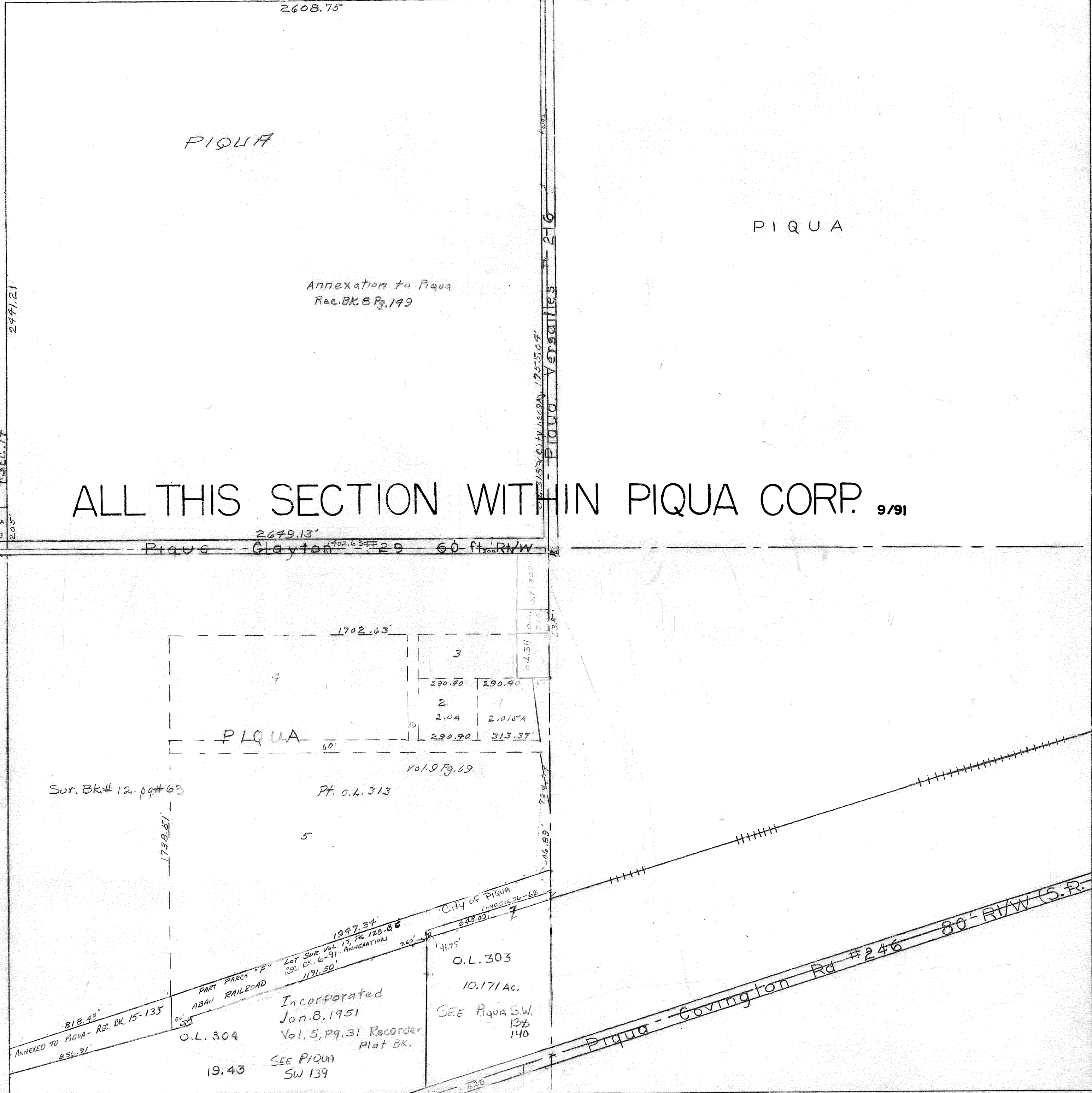


SEC. 12



ALL THIS SECTION WITHIN PIQUA CORP. 9/91

PIQUA

PIQUA

Annexation to Piqua  
Rec. BK. 8 Pg. 199

Piqua - Clayton 60 ft. RTW

PIQUA

Sur. BK # 12 pg # 63

Pl. G. L. 313

Vol. 9 Pg. 69

CITY OF PIQUA  
LAND SURV. 26-68

O.L. 303

10.171 Ac.

SEE PIQUA S.W.  
137  
140

Incorporated  
Jan. 8, 1951

Vol. 5, Pg. 31 Recorder  
Plat BK.

SEE PIQUA  
SW 139

19.43

S.E. 27

J.L.J.

REC. Vol. 6 Pg. 37 - ANNEXATION  
 REC. Vol. 7 Pg. 6 - ANNEXATION  
 REC. Vol. 8 Pg. 149 - ANNEXATION  
 REC. Vol. 5 Pg. 31 - S.W. QR

LOT Book 9 Pg. 69 - ANNEXATION  
 LOT Book 7 Pg. 88 - S.W. 1/4 + S.E. 1/4

244 - COMPLETE  
 109 - NORTH EAST QR.  
 51 - N.W. 1/4 + O.L. 1/6 Piqua  
 82 - Piqua  
 94 - SEPT. SW  
 56 - ANNEXATION  
 63 - ANNEXATION

Surveys:  
 Vol. 1 page  
 Vol. 2 "  
 Vol. 2 "  
 LOT Book 2 "  
 Vol. 5 "  
 Vol. 8 "  
 Vol. 12 "  
 Vol. 12 "

SMDA NUMBER  
 M40-WA009

SEC. 18 IN PIQUA