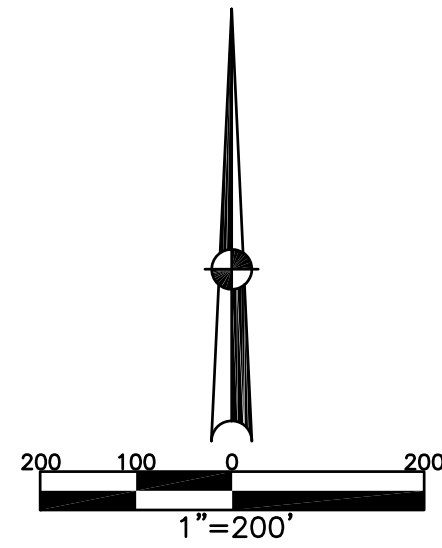


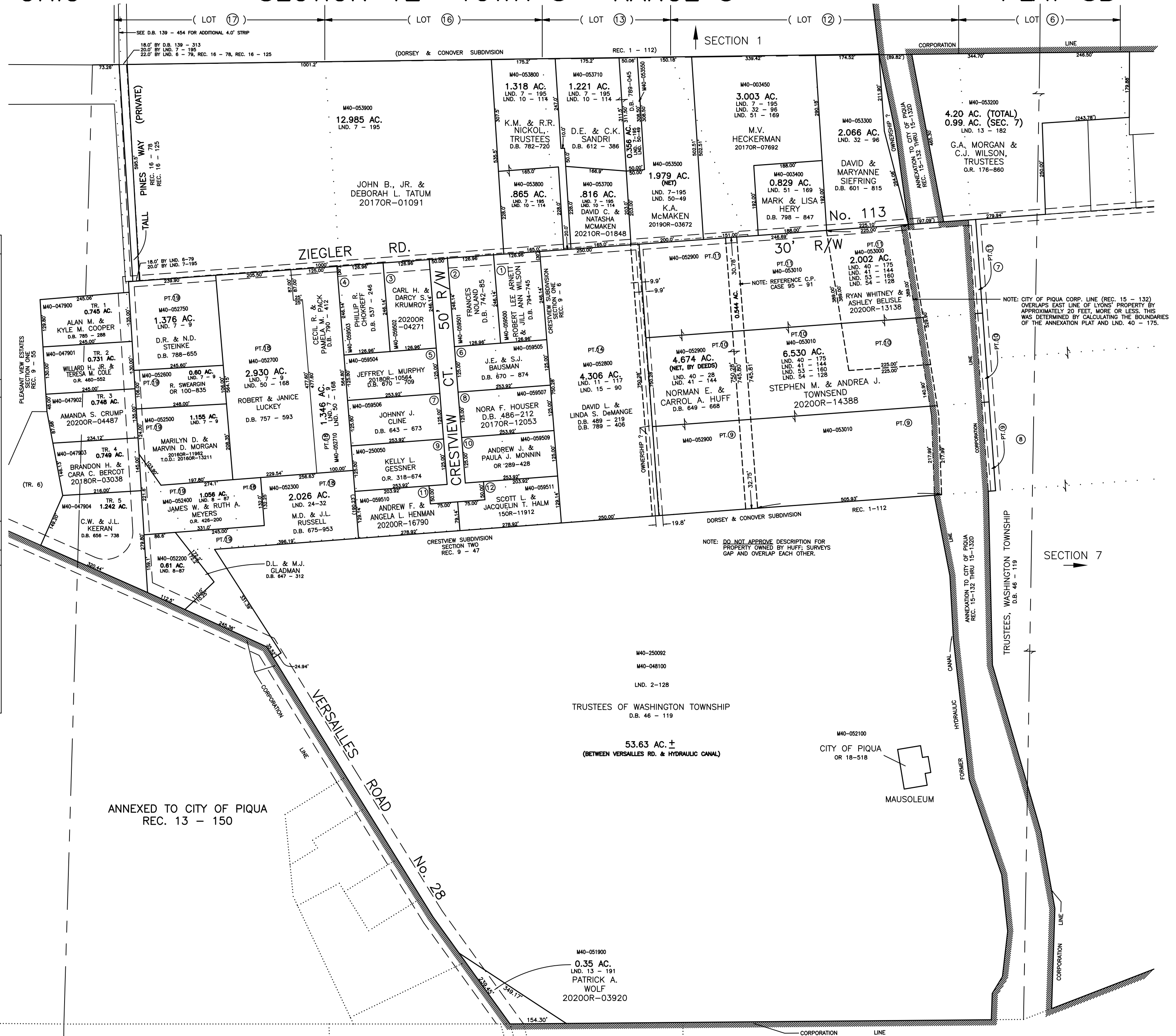
WASHINGTON TWP.
MIAMI COUNTY, OHIO

NORTHEAST QUARTER
SECTION 12 TOWN 8 RANGE 5

PLAT 8B



ABBREVIATION LEGEND		
20140R-07759	=	RECORDER'S DOCUMENT NUMBER
OR 406-509	=	OFFICIAL RECORD 406 PAGE 509
D.B. 613-172	=	DEED BOOK 613, PAGE 172
REC. 15-72	=	RECORDER'S PLAT BOOK 15, PAGE 72
LND. 33-15	=	LAND SURVEY VOLUME 33, PAGE 15
LOT 19-12	=	LOT SURVEY VOLUME 19, PAGE 12
R.R. 8-29	=	ROAD RECORD VOLUME 8, PAGE 29
R/W	=	RIGHT OF WAY
C	=	CENTERLINE
AC.	=	ACRES
TWP.	=	TOWNSHIP
TR.	=	TRACT
②	=	LOT CREATED BY RECORDER'S PLAT
LINE LEGEND		
	=	Blow-up Boundary
	=	Property Line
	=	Lot Split Line
	=	Section Line
	=	Centerline
	=	Right-of-Way Line
	=	Corporation Line
SURVEY INDEX		
LND. 2-128	LND. 40-175	REC. 1-112
LND. 6-79	LND. 41-144	REC. 9-6
LND. 6-88	LND. 50-49	REC. 9-47
LND. 7-9	LND. 50-168	REC. 9-55
LND. 7-195	LND. 51-169	REC. 13-150
LND. 8-87	LND. 53-160	REC. 14-88
LND. 10-114		REC. 15-132
LND. 11-117		REC. 16-78
LND. 13-182		REC. 16-125
LND. 13-191		
LND. 15-90		
LND. 16-54		
LND. 24-32		
LND. 31-53		
LND. 32-96		
LND. 33-87		
LND. 40-28		



PREPARED BY: MIAMI COUNTY ENGINEER'S MAP DEPARTMENT
PAUL P. HUELSKAMP, COUNTY ENGINEER
DATE: AUGUST, 1991
REVISED: February 4, 2021 SSHORT